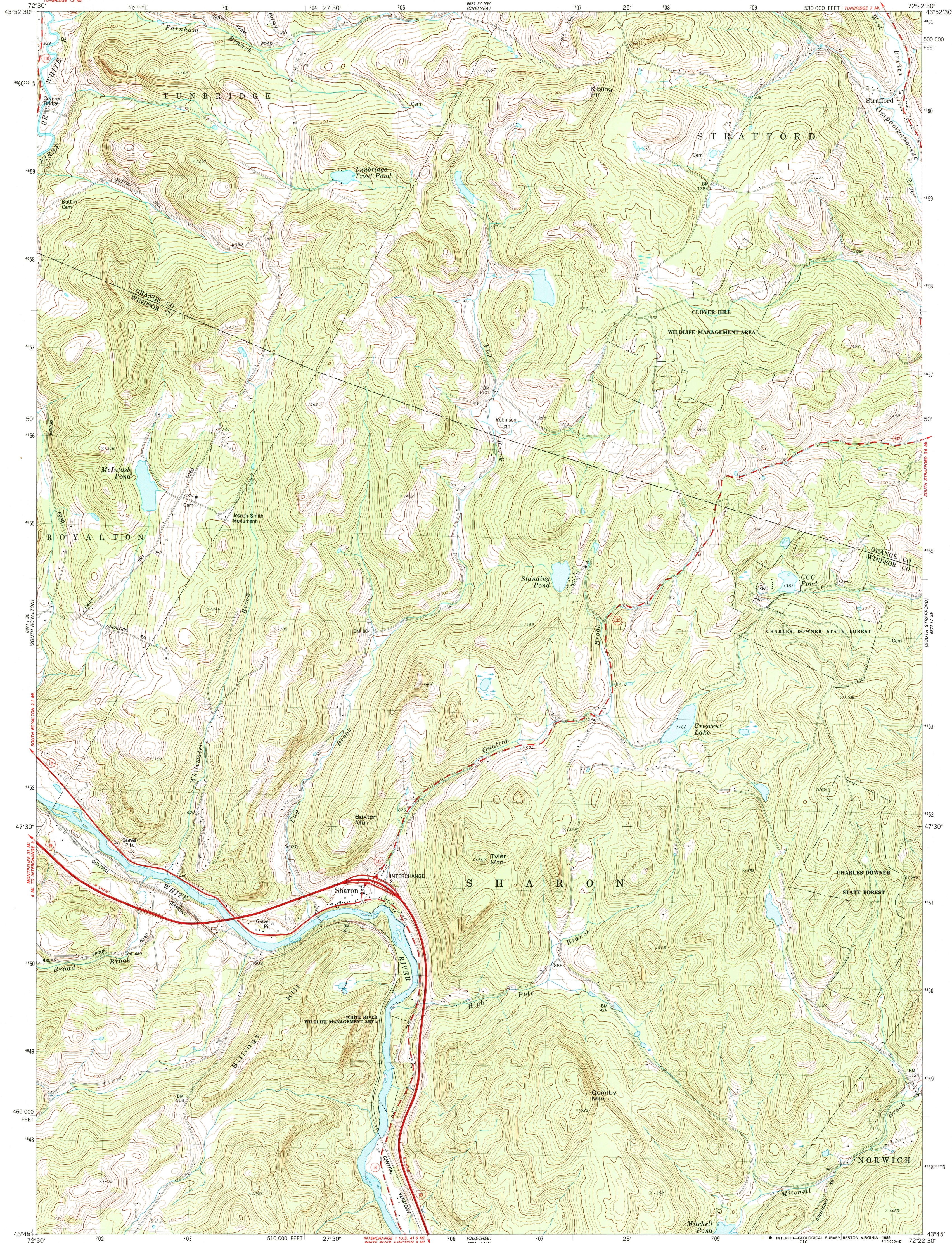


UNITED STATES
DEPARTMENT OF THE INTERIOR
GEOLOGICAL SURVEY

SHARON QUADRANGLE
VERMONT
7.5 MINUTE SERIES (TOPOGRAPHIC)



Mapped, edited, and published by the Geological Survey

Control by USGS and NOS/NOAA

Topography by photogrammetric methods from aerial photographs taken 1973. Field checked 1975. Map edited 1981

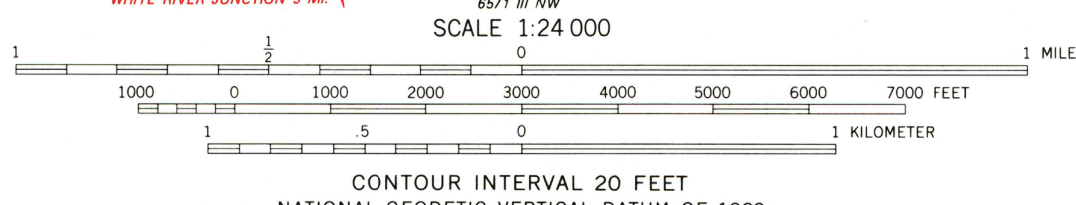
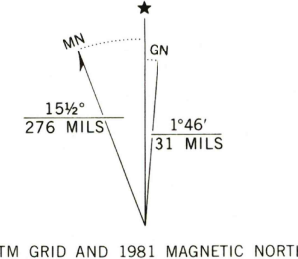
Projection and 10,000-foot grid ticks: Vermont coordinate system, (transverse Mercator)

1000-meter Universal Transverse Mercator grid, zone 18 1927 North American Datum

To place on the predicted North American Datum 1983 move the projection lines 3 meters south and 37 meters west as shown by dashed corner ticks

There may be private inholdings within the boundaries of the National or State reservations shown on this map

Map photoinspected 1983
No major culture or drainage changes observed



THIS MAP COMPLIES WITH NATIONAL MAP ACCURACY STANDARDS
FOR SALE BY U.S. GEOLOGICAL SURVEY
DENVER, COLORADO 80225, OR RESTON, VIRGINIA 22092
A FOLDER DESCRIBING TOPOGRAPHIC MAPS AND SYMBOLS IS AVAILABLE ON REQUEST



ROAD CLASSIFICATION
Primary highway, hard surface
Secondary highway, hard surface
Unimproved road
Interstate Route
U. S. Route
State Route

SHARON, VT.
SW 1/4 STRAFFORD 15' QUADRANGLE
43072 G4 TF 024

1981
PHOTOINSPECTED 1983
DMA 6511 IV SW-SERIES V813

USGS NMN HISTORICAL MAP
MAY 10 1989
REC'D FILE COPY