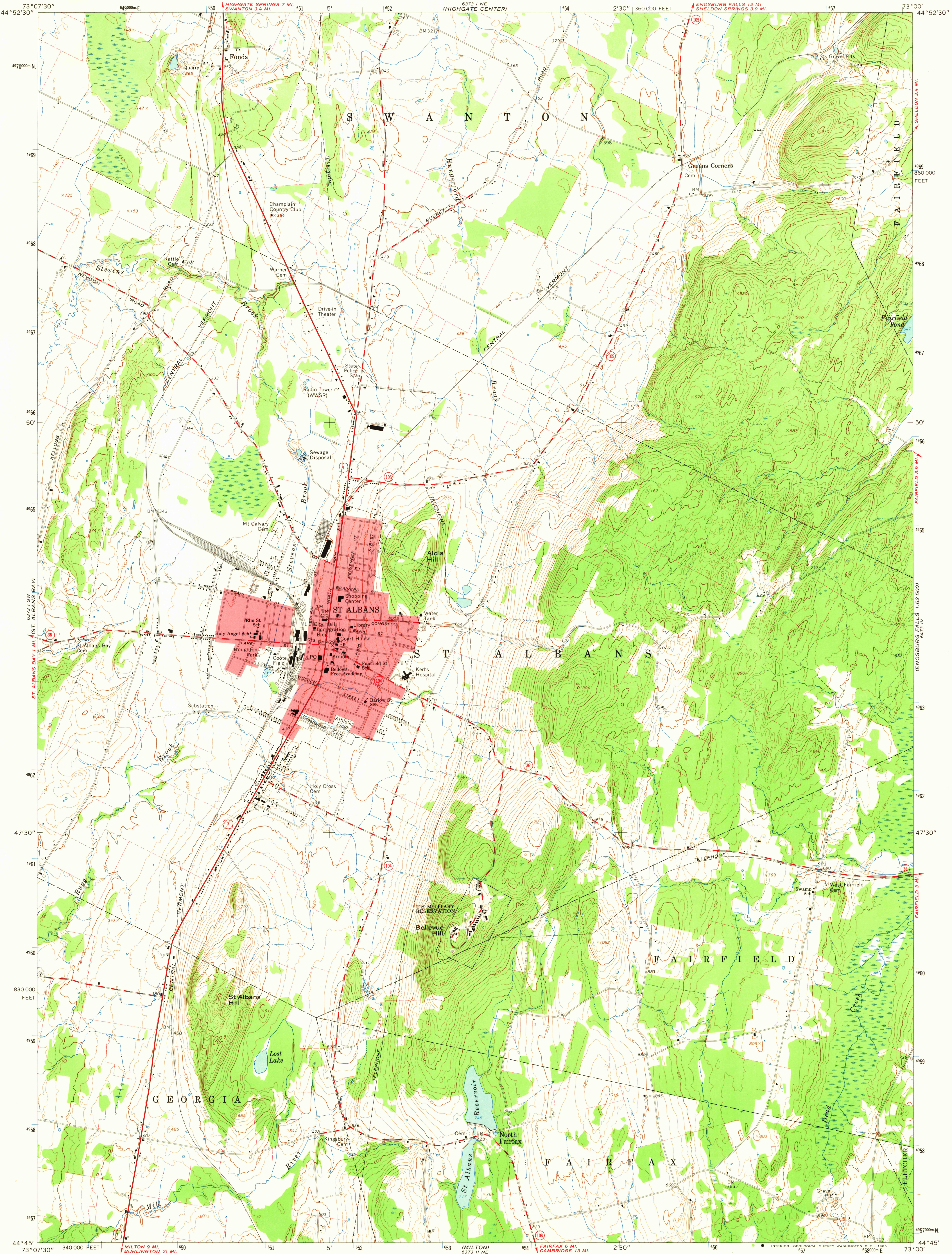


UNITED STATES  
DEPARTMENT OF THE INTERIOR  
GEOLOGICAL SURVEY

ST. ALBANS QUADRANGLE  
VERMONT—FRANKLIN CO.  
7.5 MINUTE SERIES (TOPOGRAPHIC)  
SE/4 ST. ALBANS 15' QUADRANGLE



Mapped, edited, and published by the Geological Survey

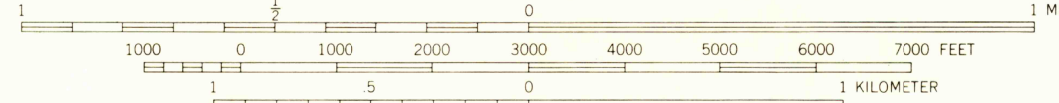
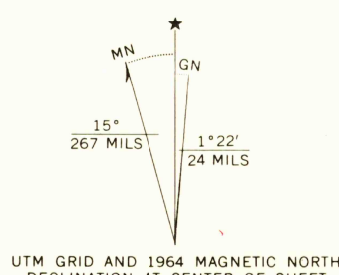
Control by USGS, USC&GS, and USCE

Topography by photogrammetric methods from aerial photographs taken 1962. Field checked 1964

Polyconic projection. 1927 North American datum  
10,000-foot grid based on Vermont coordinate system  
1000-meter Universal Transverse Mercator grid ticks,  
zone 18, shown in blue

Fine red dashed lines indicate selected fence and field lines  
where generally visible on aerial photographs. This information is  
unchecked

Red tint indicates areas in which only landmark buildings  
are shown



CONTOUR INTERVAL 20 FEET

DATUM IS MEAN SEA LEVEL

THIS MAP COMPLIES WITH NATIONAL MAP ACCURACY STANDARDS  
FOR SALE BY U. S. GEOLOGICAL SURVEY, WASHINGTON 25, D. C.  
A FOLDER DESCRIBING TOPOGRAPHIC MAPS AND SYMBOLS IS AVAILABLE ON REQUEST

USGS  
Historical File  
Topographic Division



ROAD CLASSIFICATION  
Heavy-duty ——— Light-duty ———  
Medium-duty ——— Unimproved dirt ———  
U. S. Route ——— State Route ———

HISTORICAL

ST. ALBANS, VT.  
SE/4 ST. ALBANS 15' QUADRANGLE  
N4445—W7300/7.5

1964

AMS 6373 1 SE—SERIES V813

MAY 17 1965

3005