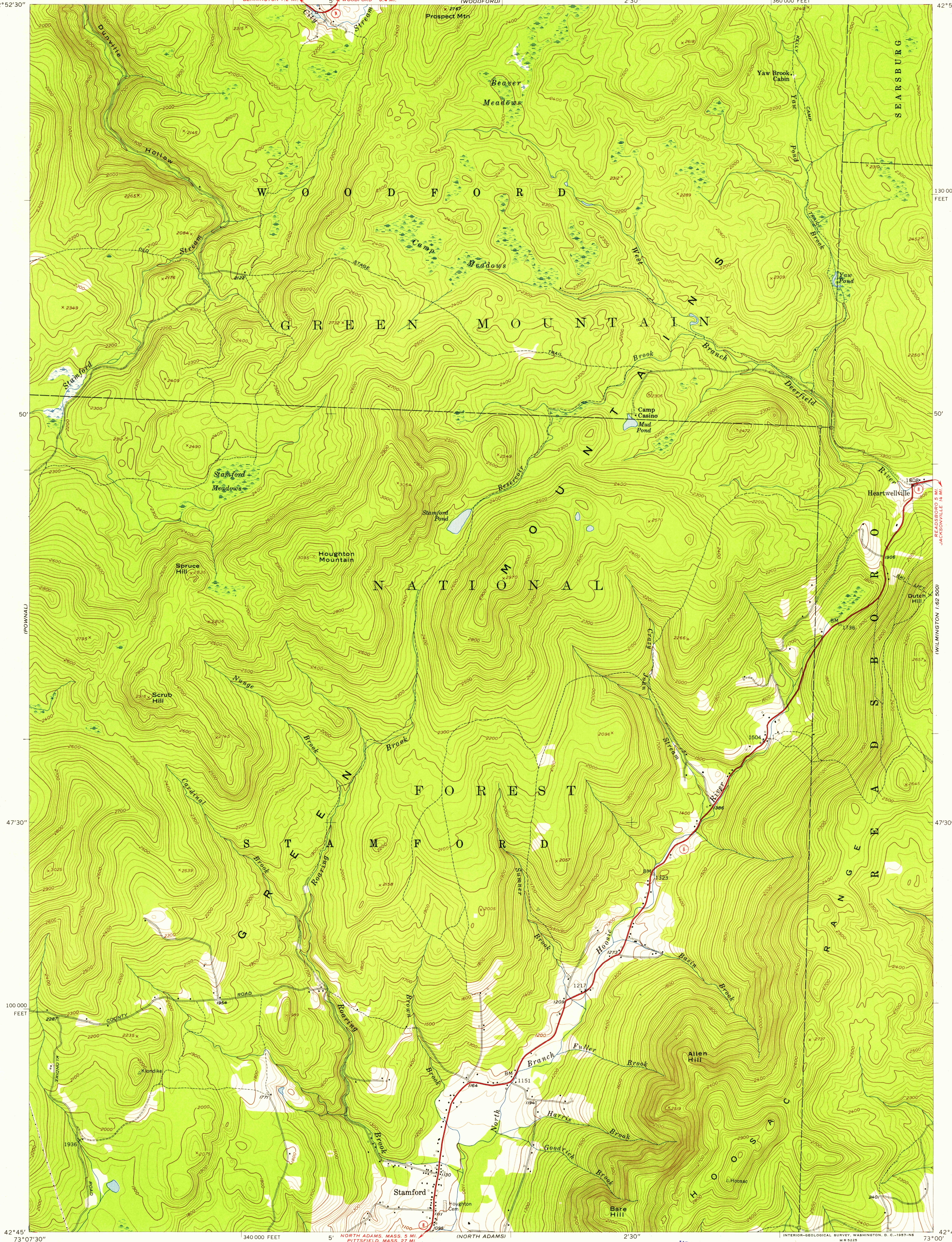
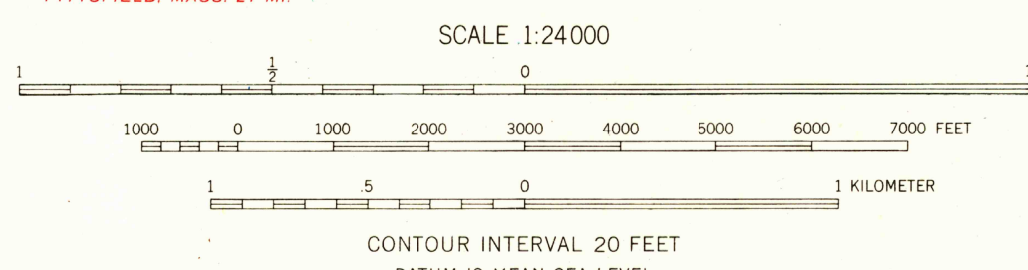


73°07'30"
42°52'30"

73°00'
42°52'30"

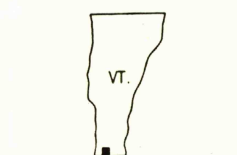


Mapped, edited, and published by the Geological Survey
Control by USGS, USFS, and Mass. Dept. of Land and Harbors
Topography from aerial photographs by photogrammetric
methods. Aerial photographs taken 1942 and 1951
Field check 1954
Polyconic projection. 1927 North American datum
10,000-foot grid based on Vermont coordinate system
Unchecked elevations are shown in brown



USGS
Historical File
Topographic Division

ROAD CLASSIFICATION
Heavy-duty ——— Light-duty ———
Medium-duty ——— Unimproved dirt ———
U. S. Route ——— State Route ———



STAMFORD, VT.
SE/4 BENNINGTON 15' QUADRANGLE
N4245—W7300/7.5

1954

THIS MAP COMPLIES WITH NATIONAL MAP ACCURACY STANDARDS
FOR SALE BY U. S. GEOLOGICAL SURVEY, WASHINGTON 25, D. C.
A FOLDER DESCRIBING TOPOGRAPHIC MAPS AND SYMBOLS IS AVAILABLE ON REQUEST

U.S.G.S.
FILE COPY
TOPOGRAPHIC DIVISION

HISTORICAL
U.S.G.S.
FILE COPY
TOPOGRAPHIC DIVISION