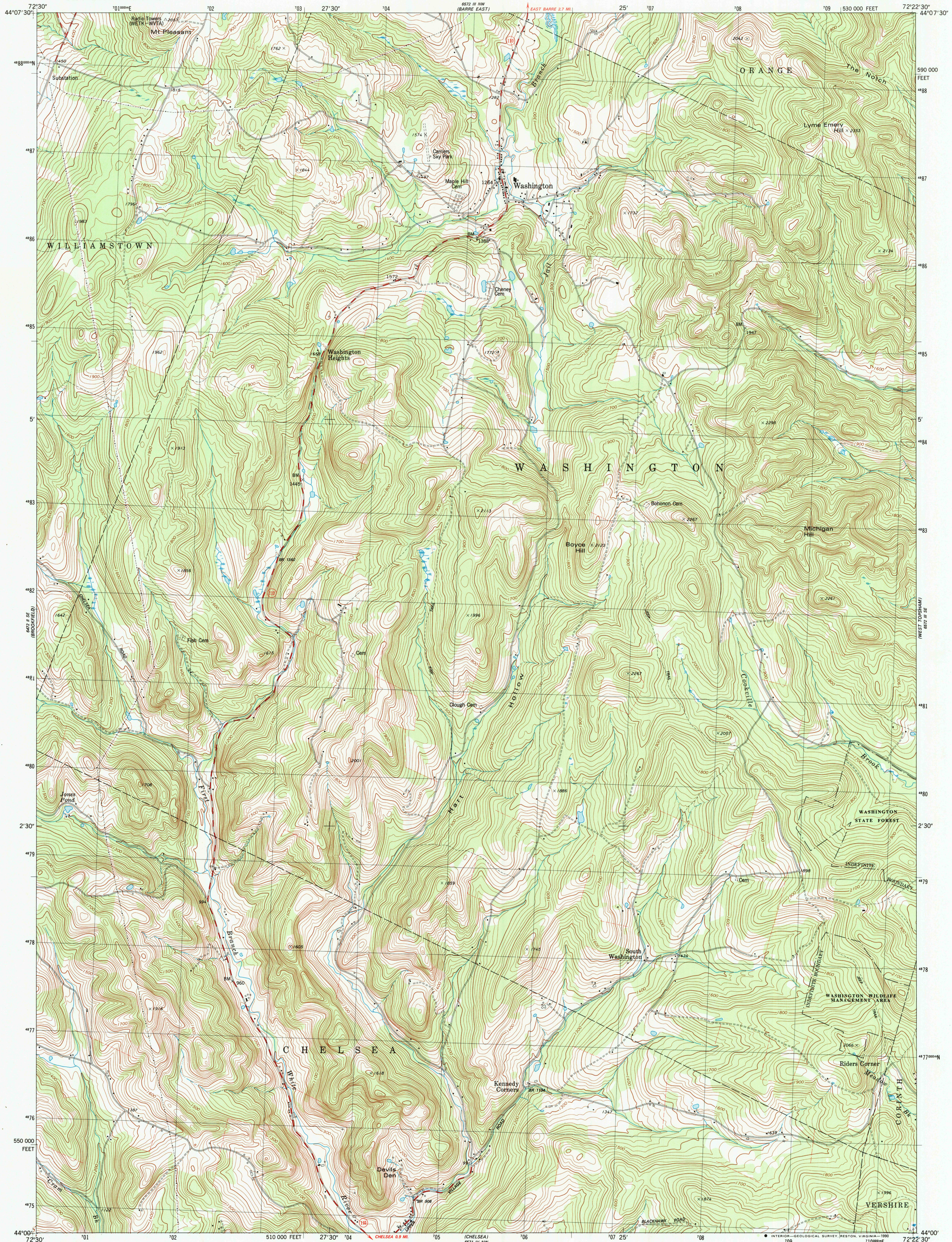


UNITED STATES
DEPARTMENT OF THE INTERIOR
GEOLOGICAL SURVEY

WASHINGTON QUADRANGLE
VERMONT-ORANGE CO.
7.5 MINUTE SERIES (TOPOGRAPHIC)
SW 1/4 EAST BARRE 15' QUADRANGLE



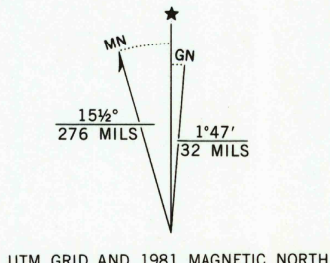
Mapped, edited, and published by the Geological Survey

Control by USGS and NOS/NOAA
Topography by photogrammetric methods from aerial photographs
taken 1976. Field checked 1976. Map edited 1981

Projection and 10,000-foot grid ticks: Vermont coordinate
system (transverse Mercator)
1000-meter Universal Transverse Mercator grid, zone 18
1927 North American Datum
To place on the predicted North American Datum 1983
move the projection lines 3 meters south and
37 meters west as shown by dashed corner ticks

Area covered by dashed light-blue pattern is subject
to controlled inundation

Fine red dashed lines indicate selected fence and field lines where
generally visible on aerial photographs. This information is unchecked
There may be private inholdings within the boundaries of
the National or State reservations shown on this map



SCALE 1:24 000
1 1000 2000 3000 4000 5000 6000 7000 FEET
1 5 10 20 30 40 50 60 70 80 90 100 METERS
CONTOUR INTERVAL 20 FEET
NATIONAL GEODETIC VERTICAL DATUM OF 1929

THIS MAP COMPLIES WITH NATIONAL MAP ACCURACY STANDARDS
FOR SALE BY U.S. GEOLOGICAL SURVEY
DENVER, COLORADO 80225, OR RESTON, VIRGINIA 22092
A FOLDER DESCRIBING TOPOGRAPHIC MAPS AND SYMBOLS IS AVAILABLE ON REQUEST

ROAD CLASSIFICATION
Primary highway, hard surface ——— Light-duty road, hard or improved surface
Secondary highway, hard surface ——— Unimproved road
Interstate Route ——— U.S. Route ——— State Route

WASHINGTON, VT.
SW 1/4 EAST BARRE 15' QUADRANGLE
N4400-W7222.5/7.5

1981
PHOTOINSPECTED 1983
DMA 6572 III SW-SERIES V813