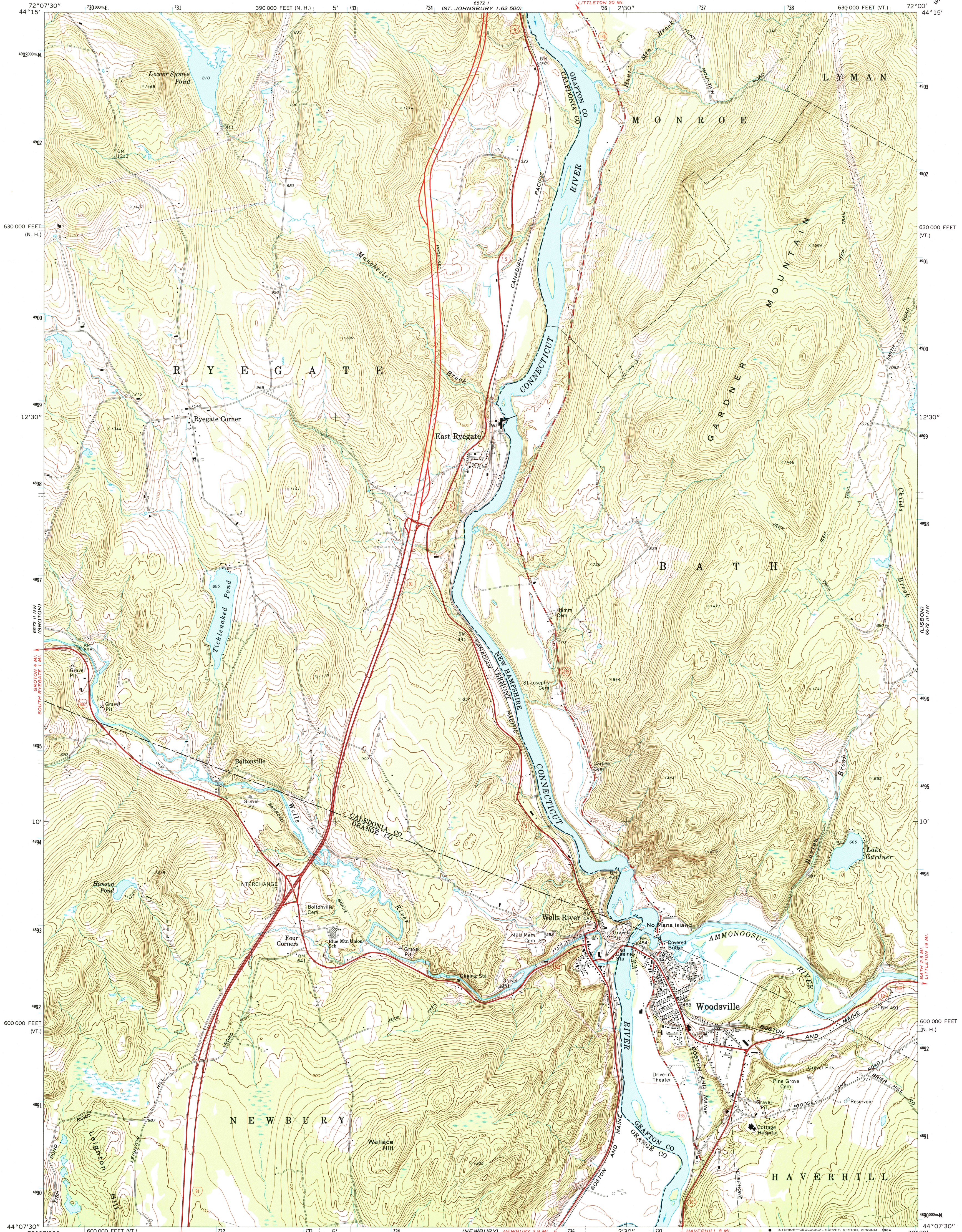


UNITED STATES
DEPARTMENT OF THE INTERIOR
GEOLOGICAL SURVEY

WOODSVILLE QUADRANGLE
VERMONT-NEW HAMPSHIRE
7.5 MINUTE SERIES (TOPOGRAPHIC)
NE/4 WOODSVILLE 15' QUADRANGLE



Mapped, edited, and published by the Geological Survey

Control by USGS and NOS/NOAA

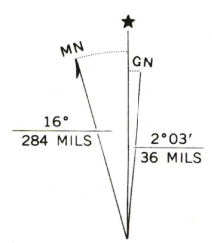
Topography by photogrammetric methods from aerial photographs taken 1971. Field checked 1973

Projection: Vermont coordinate system (transverse Mercator)

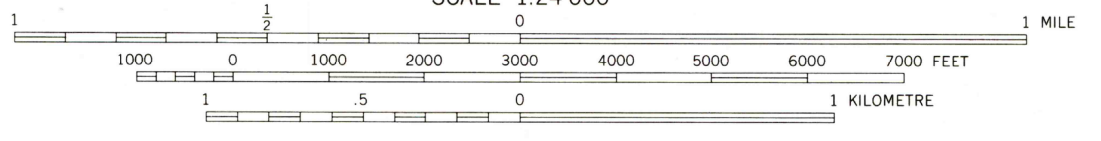
10,000-foot grid ticks based on Vermont and New Hampshire coordinate systems

1000-metre Universal Transverse Mercator grid ticks, zone 18, shown in blue

Fine red dashed lines indicate selected fence and field lines where generally visible on aerial photographs. This information is unchecked



UTM GRID AND 1973 MAGNETIC NORTH DECLINATION AT CENTER OF SHEET



SCALE 1:24 000

CONTOUR INTERVAL 20 FEET

NATIONAL GEODETIC VERTICAL DATUM OF 1929



QUADRANGLE LOCATION

ROAD CLASSIFICATION	
Primary highway, hard surface	Light-duty road, hard or improved surface
Secondary highway, hard surface	Unimproved road
Interstate Route	U. S. Route
	State Route

WOODSVILLE, VT.-N.H.
NE/4 WOODSVILLE 15' QUADRANGLE
N4407.5-W7200/7.5

1973

AMS 6572 II NE-SERIES V813

RETURN TO:
USGS AND HISTORICAL MAP ARCHIVES