

Saxtons River

VERMONT

1:25 000-scale metric
topographic map



7.5 X 15 MINUTE QUADRANGLE
SHOWING

- Contours and elevations in meters
- Highways, roads and other manmade structures
- Water features
- Woodland areas
- Geographic names



GEOLOGICAL SURVEY

PROVISIONAL EDITION 1984

PRODUCED BY THE UNITED STATES GEOLOGICAL SURVEY
CONTROL BY U.S.G.S. NOS-NOAA, AND STATE OF VERMONT AGENCIES
COMPILED FROM AERIAL PHOTOGRAPHS TAKEN 1977
FIELD CHECKED 1980 MAP EDITED 1984
PROJECTION UNIVERSAL TRANSVERSE MERCATOR
GRID 1000-METER UNIVERSAL TRANSVERSE MERCATOR ZONE 18
10,000-FOOT STATE GRID TICKS
UTM GRID DELINEATION
1984 MAGNETIC NORTH DECLINATION 18° WEST
VERTICAL DATUM NATIONAL GEODETIC VERTICAL DATUM OF 1989
HORIZONTAL DATUM 1983 NORTH AMERICAN DATUM
To place on the predicted North American Datum of 1983, move the projection lines as shown by dashed corner ticks (4 meters south and 37 meters west)
There may be private inholdings within the boundaries of any National or State reservations shown on this map

CONTOUR INTERVAL 6 METERS
CONTOUR ELEVATIONS SHOWN TO THE NEAREST 0.1 METER
OTHER ELEVATIONS SHOWN TO THE NEAREST METER
FOR SALE BY U.S. GEOLOGICAL SURVEY
P.O. BOX 25286, DENVER, COLORADO 80225

THIS MAP COMPLIES WITH NATIONAL MAP ACCURACY STANDARDS

CONVERSION TABLE		ADJOINING MAPS		
Meters	Feet	1	2	3
1	3.2808	4	5	
2	6.5617			
3	9.8425			
4	13.1234			
5	16.4042			
6	19.6850			
7	22.9659			
8	26.2467			
9	29.5276			
10	32.8084			
To convert meters to feet multiply by 3.2808		1 Weston		
To convert feet to meters multiply by 0.3048		2 Andover (7.5°)		
		3 Chester (7.5°)		
		4 Springfield		
		5 Londonderry		
		6 Balltown Falls		
		7 Stratton Mountain		
		8 Townshend		
		9 Walpole		



ROAD LEGEND

Improved Road
Unimproved Road
Trail
Interstate Route U. S. Route State Route

PROVISIONAL MAP
Produced from original
manuscript drawings. Information
shown as of date of
field check

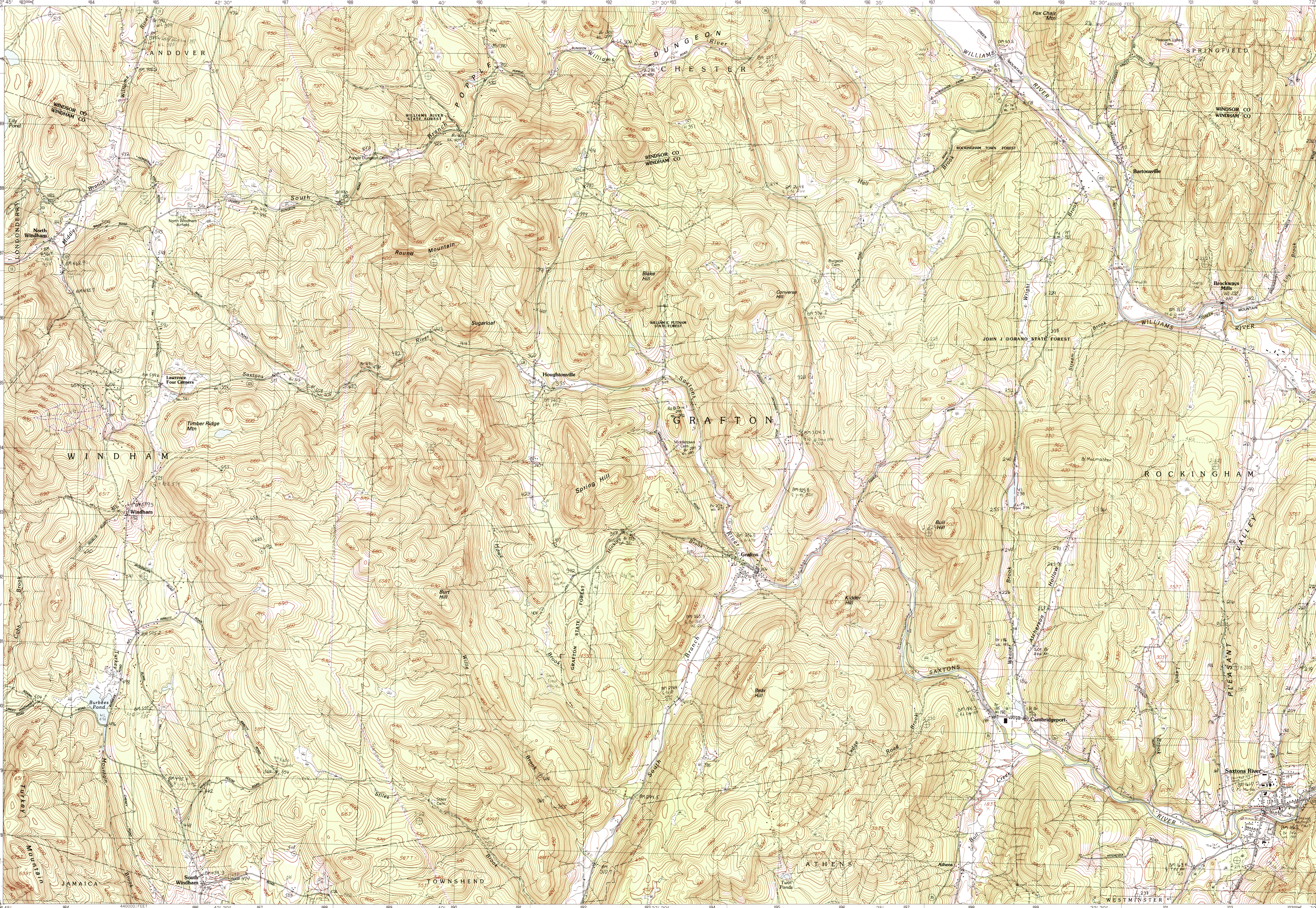
RECEIVED

OCT 31 1998

USGS NMD
HISTORICAL MAP ARCHIVES

SAXTONS RIVER, VERMONT

7.5 X 15 MINUTE SERIES (TOPOGRAPHIC)



INTERIOR—GEOLOGICAL SURVEY, RESTON, VIRGINIA—1984
KILOMETERS 1 5 0 1 2 3 4
MILES 1 5 0 1 2
SCALE 1:25 000
1 CENTIMETER ON THE MAP REPRESENTS 250 METERS ON THE GROUND
CONTOUR INTERVAL 6 METERS
SAXTONS RIVER, VERMONT
PROVISIONAL EDITION 1984
43072-B5-TM-025