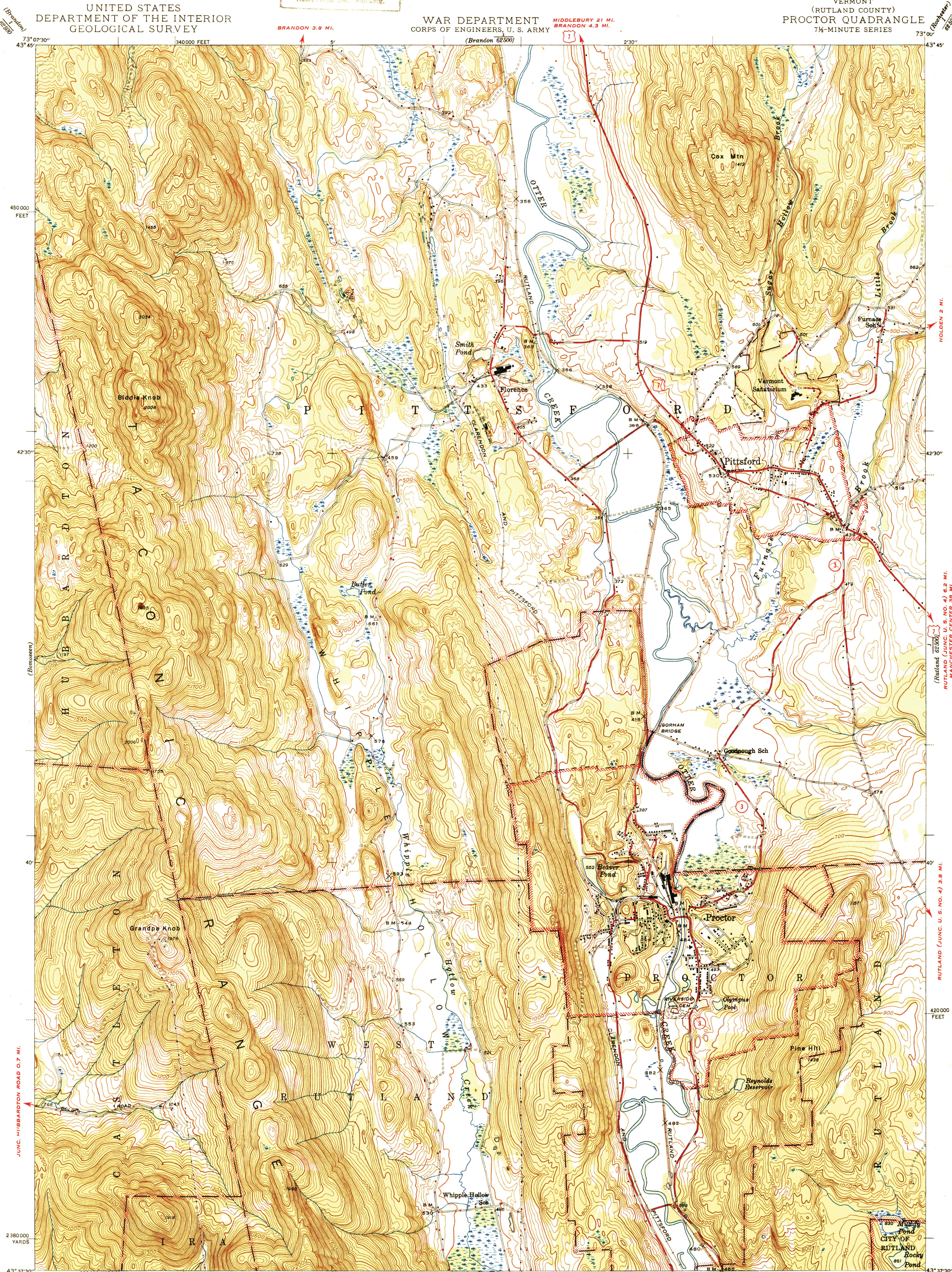


U.S.G.S.
FILE COPY
Instruction and Rating.

UNITED STATES
DEPARTMENT OF THE INTERIOR
GEOLOGICAL SURVEY

WAR DEPARTMENT
CORPS OF ENGINEERS, U. S. ARMY

VERMONT
(RUTLAND COUNTY)
PROCTOR QUADRANGLE
7 1/2-MINUTE SERIES

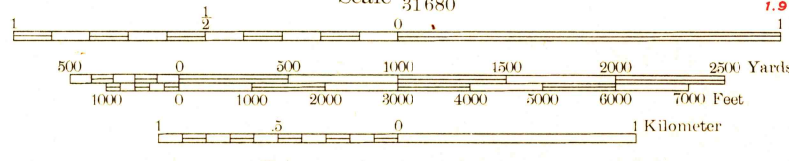


73° 07' 30" 43° 45' 340000 FEET
450000 FEET
42° 30'
40'
380000 YARDS
43° 37' 30" 73° 07' 30" 990000 YARDS

73° 00' (Brandon) 62500
HOLDEN 2 MI.
RUTLAND (JUNC. U. S. NO. 4) 6.2 MI.
MANCHESTER CENTER 3.6 MI.
RUTLAND (JUNC. U. S. NO. 4) 3.8 MI.
420000 FEET
73° 00' (Proctor) 62500

Map by the Geological Survey
1944

APPROXIMATE MEAN
DECLINATION, 1944



Contour interval 20 feet
Datum is mean sea level

ROAD CLASSIFICATION
1946
Dependable hard surface
Secondary hard surface
all weather road
More than two lanes indicated along road with tick at point of change

U. S. Route 15
State Route 26
2 LANE, 4 LANE

PROCTOR, VT.
Edition of 1946
N4337.5-W7300/7.5

Polyconic projection, 1927 North American datum
5000 yard grid based on U. S. zone system, A
10000 foot grid based on Vermont
rectangular coordinate system

U.S.G.S.
FILE COPY
Instruction and Rating.

USCS
Historical
Topographic Division