

(Rutland) 72°45'

DEPARTMENT OF THE INTERIOR
U. S. GEOLOGICAL SURVEY

878 - S - 1 - E / 2
STATE OF VERMONT
GEO. H. PERKINS
STATE GEOLOGIST
(Woodstock)

Advance sheet
Subject to correction
35

VERMONT
LUDLOW QUADRANGLE

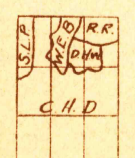
72°30' (Hanover)
43°30'



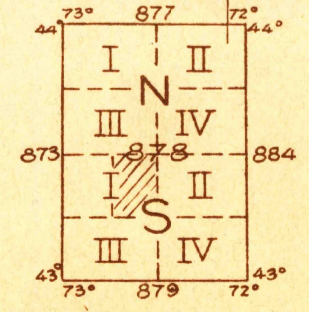
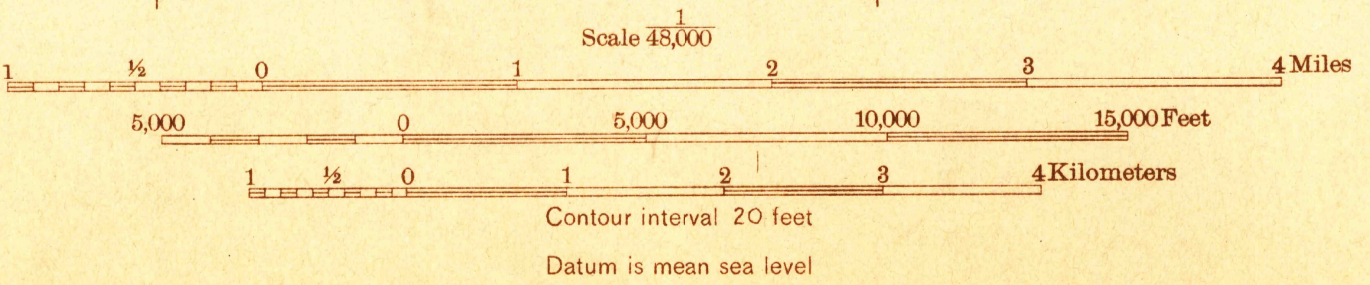
15 Miles
14
13
12
11
10
9
8
7
6
5
4
3
2
1
0

(Londonderry) 72°45'

Albert Pike, Division Engineer
Topography by C H Davey, D H Watson
R Reeves, S L Parker and W E Bishop
Control by U. S. Geological Survey and
U. S. Coast and Geodetic Survey
Surveyed in 1928-1929



APPROXIMATE MEAN
DECLINATION, 1929



Polyconic projection. North American datum
5000 yard grid based upon U. S. zone system, A

FILE COPY

RETURN TO CENTRAL FILE

LUDLOW, VT.

(Baileys Falls)