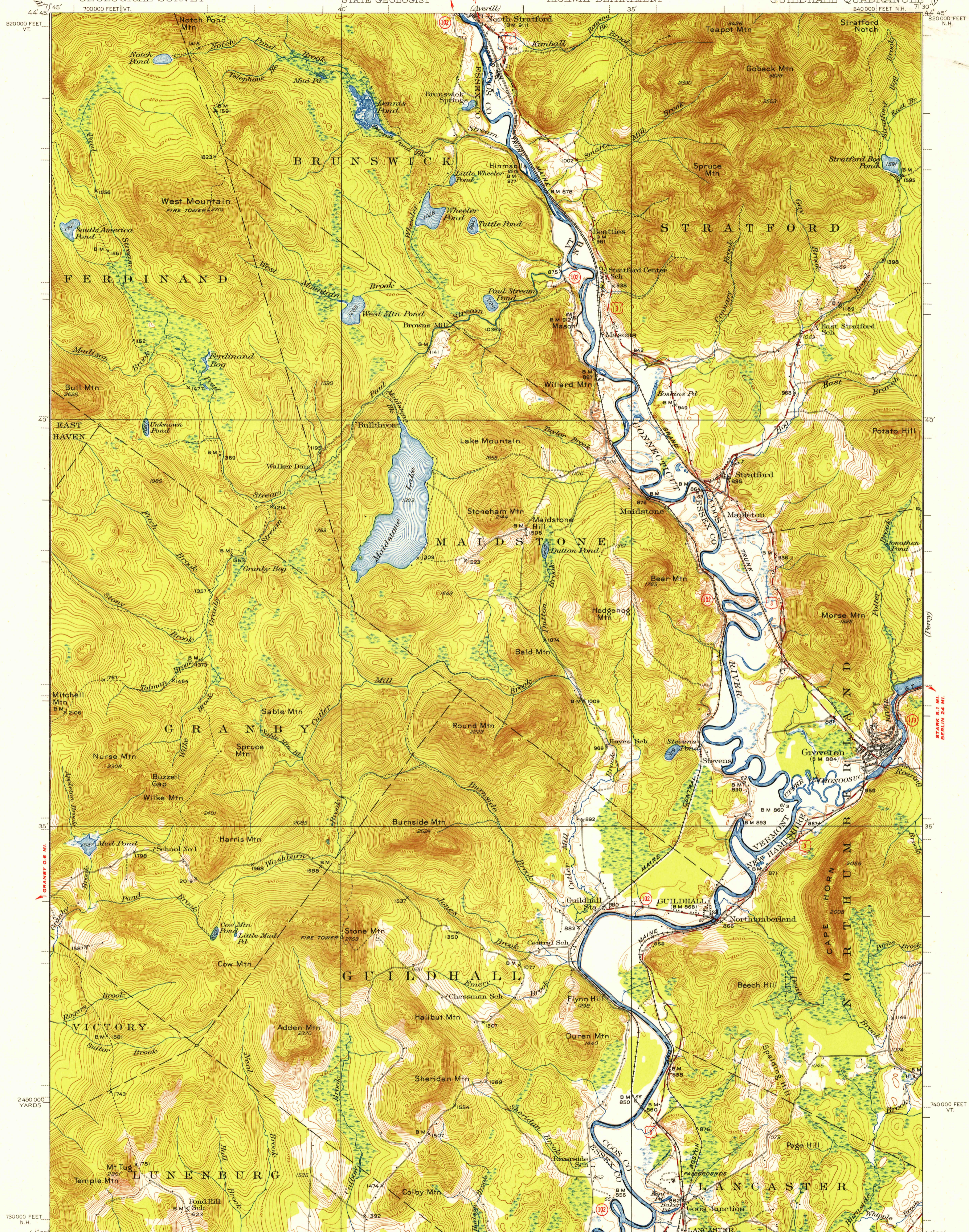
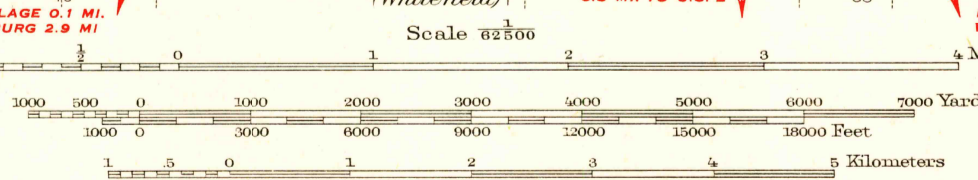


U.S.G.S.
FILE COPY



Topography by A.T. Fowler, J.I. Gayetty, J.M. Whitman, Crawford Dickey, R.E. Amidon, and R.F. Hamke. Culture and drainage in part compiled from aerial photographs taken by Air Corps, U.S. Army Surveyed in 1931-1933.

ROAD CLASSIFICATION
Heavy-duty ——— 4 LANE 16 LANE Light-duty ———
Medium-duty ——— 4 LANE 16 LANE Unimproved dirt ———
U.S. Route State Route



Contour interval 20 feet
Datum is mean sea level

FOR SALE BY U.S. GEOLOGICAL SURVEY, WASHINGTON 25, D. C.
A FOLDER DESCRIBING TOPOGRAPHIC MAPS AND SYMBOLS IS AVAILABLE ON REQUEST

U.S.G.S.
FILE COPY
Inspection and Rating

GUILDHALL, VT.-N.H.
N430-W7130/15
1933

HISTORICAL
AUG 28 1952

3185