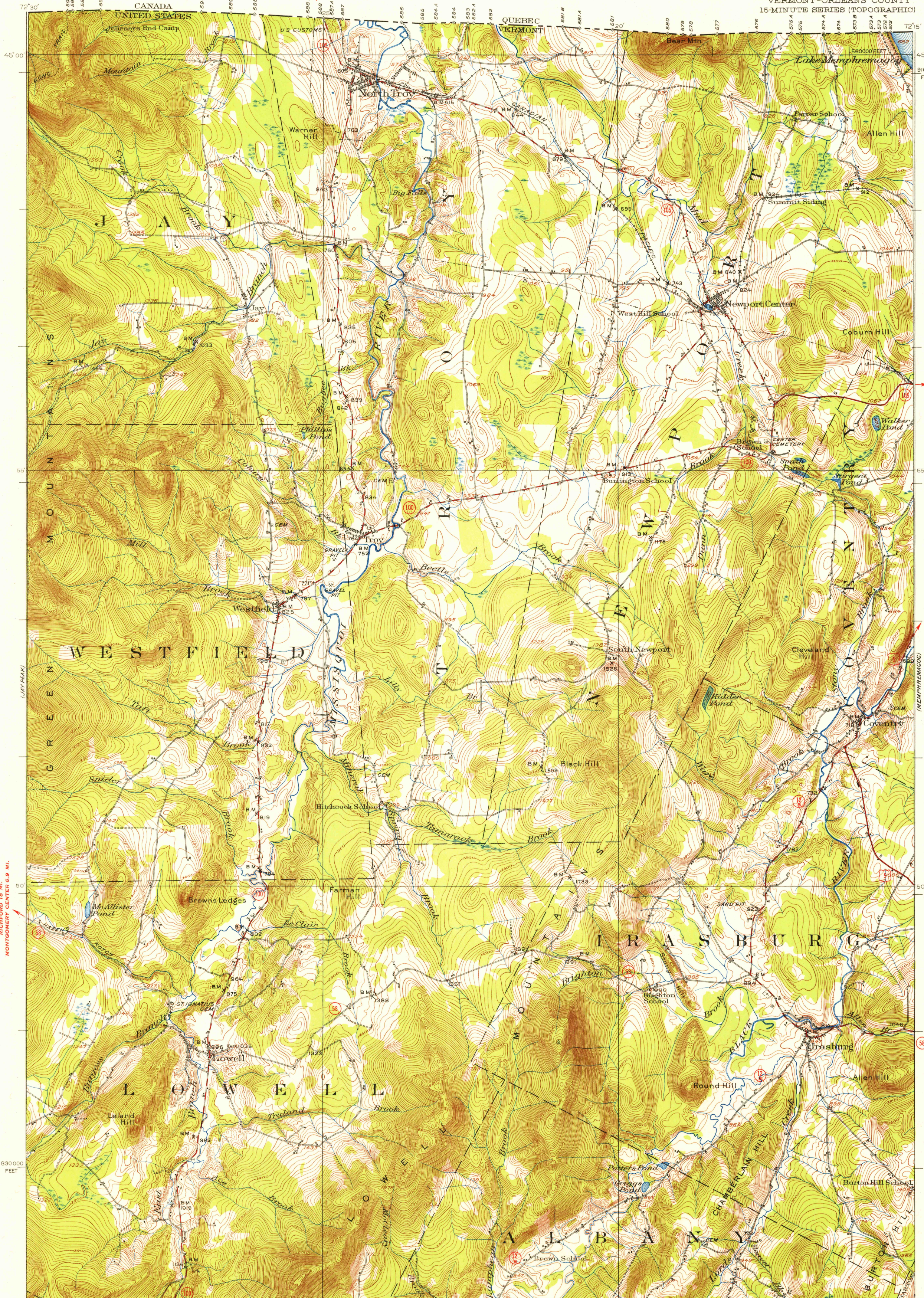


U.S.G.S.
FILE COPY
TOPOGRAPHIC DIVISION



RICHFORD 17 MI.
HIGHWATER 2 MI.

NEWPORT (JUNC. U.S. 51) 1.9 MI.
43 MI. TO U.S. 3

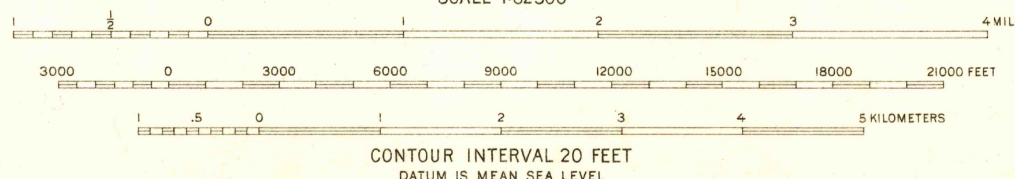
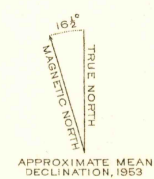
NEWPORT 6.5 MI.
SHEMROKE 26 MI.

BARFORD 2.5 MI.
ST. JOHNSBURY 35 MI.

2 MI. TO U.S. 5
ORLEANS 3.7 MI.

RICHFORD 18 MI.
MONTGOMERY CENTER 6.9 MI.

Mapped, edited and published by the Geological Survey
Control by USGS, USC&GS, and International Boundary
Commission
Topography by plane-table surveys 1923. Revised 1953
Polyconic projection, 1927 North American datum
10,000-foot grid based on Vermont coordinate system
EDEN MILLS 4.3 MI.
WATERBURY (JUNC. U.S. 2) 35 MI.



ROAD CLASSIFICATION

Heavy-duty	4 LANE 16 LANE	Light-duty
Medium-duty	4 LANE 16 LANE	Unimproved dirt

USGS Route
State Route

Historical File
Topographic Division

IRASBURG, VT.
N4445-W7215/15

JAN 19 1955

2615