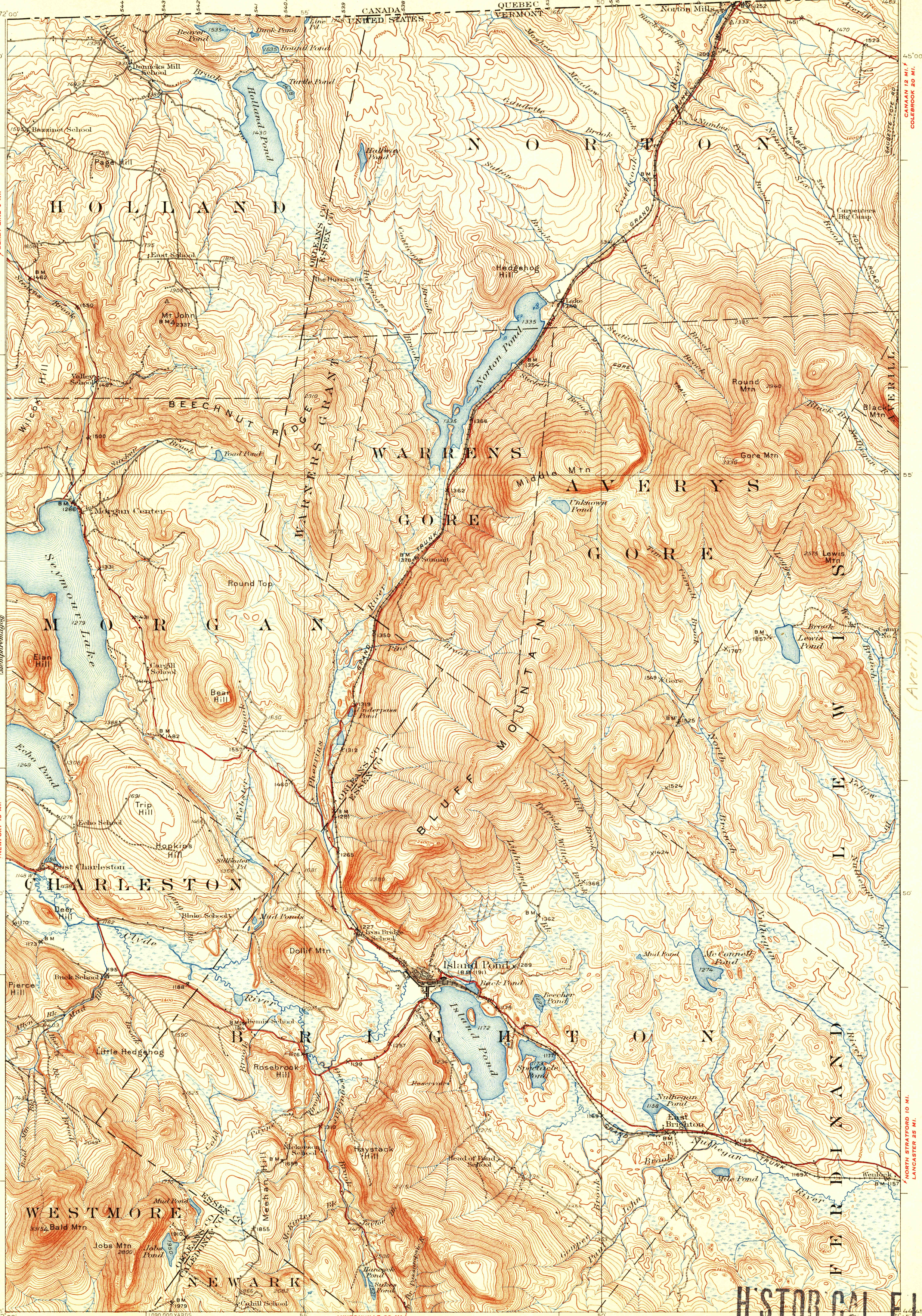


H O L L A N D
W A R R E N S
G O R E
W E S T M O R E
N O R T O N
B E E C H N U T
M O R G A N
C H A R L E S T O N
B L U F F M O U N T A I N
I S L A N D P O N D
N E W A R K



Topography by D.H. Watson, R.H. Runyan, W.C. Thompson, R.J. Belton, H.A. Bean, and G.A. Mock
Control in part by International Boundary Commission Surveyed in 1924

Scale 1:25,000

1 2 3 4 Miles
1000 500 0 1000 2000 3000 4000 5000 6000 7000 Yards
1 2 3 4 5 Kilometers

Contour interval 20 feet
Datum is mean sea level

ISLAND POND, VT.
Edition of 1926

HISTORICAL FILES
(DO NOT REMOVE)