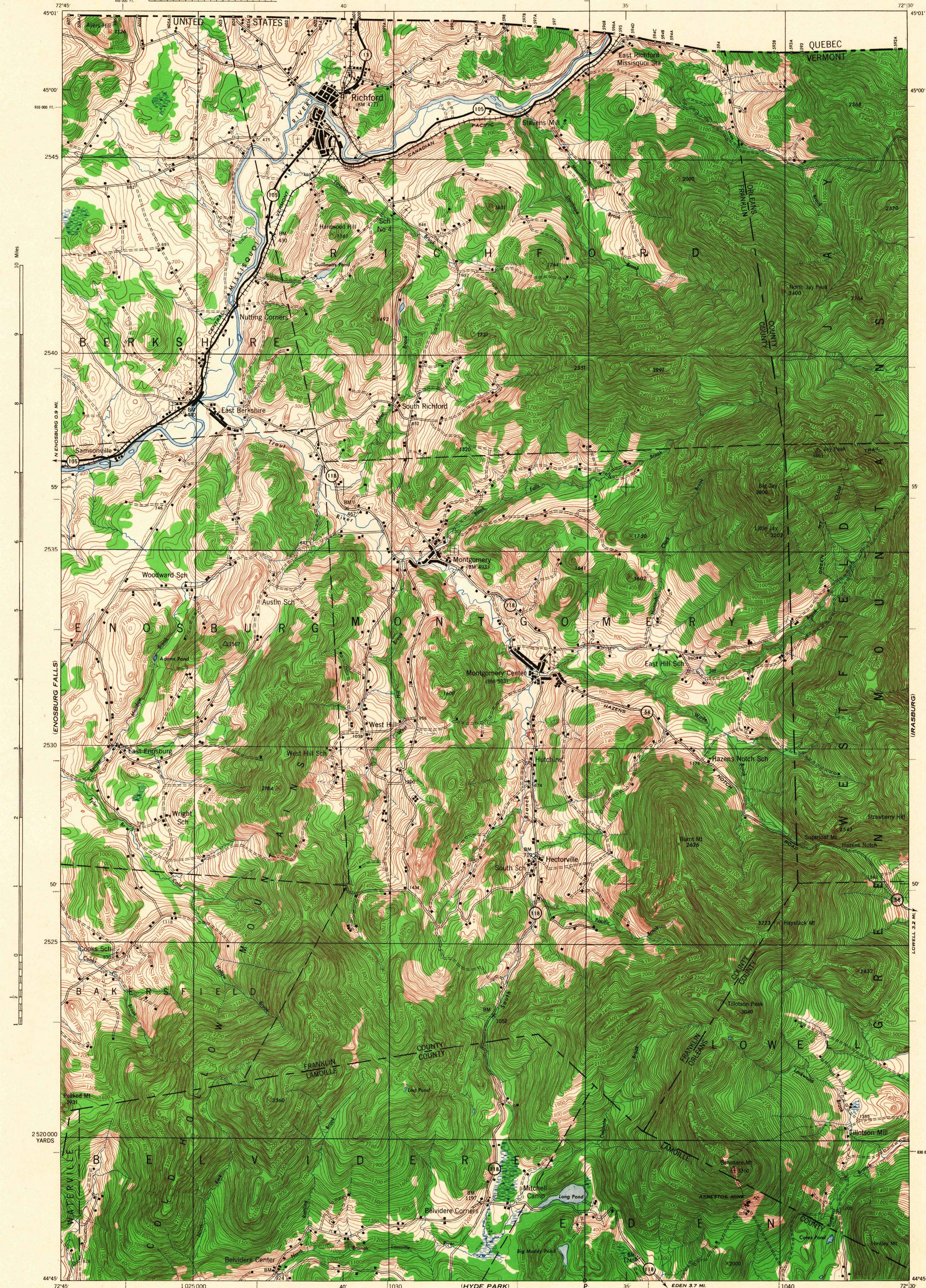


U.S.G.S.
FILE COPY
TOPOGRAPHIC DIVISION



First Edition 1943.
Prepared under the direction of the Chief of Engineers, U. S. Army, 1943.
Army Map Service, East 3d. Louis unit.
Based on U. S. G. S. quadrangle, Jay Peak, 1:62,500 (1925).
Control in part by International Boundary and U. S. Geological Survey.
Surveyed in 1922-1923.
Revised from single lens vertical aerial photographs.
Aerial photography - A. A. Department of Agriculture, 1940-41.
Polyconic Projection, North American Datum.

ROAD CLASSIFICATION 1943
Dependable hard surface.
Loose surface graded.
Heavy duty road.
Secondary hard surface.
All weather road.
Dirt road.
State Road.
3 LANE 4 LANE

Scale 1:62,500
1 1/2 0 1 2 3 Miles
1000 0 1000 2000 3000 4000 5000 Yards
CONTOUR INTERVAL 20 FEET
DATUM IS MEAN SEA LEVEL
FIVE THOUSAND YARD GRID COMPILED FROM GRID SYSTEM FOR PROGRESSIVE MAPS
IN THE U. S. ZONE A U. S. & G. S. SPECIAL PUBLICATION NO. 59
THE LAST THREE DIGITS OF THE GRID NUMBERS ARE OMITTED
VERMONT STATE GRID ZONE IS INDICATED BY DOTTED TICKS
OUTSIDE THE NAT. LINE AT 10,000 FOOT INTERVALS
NOTE: OFFICERS USING THIS MAP WILL MARK VERTICAL CORRECTIONS AND ADDITIONS WHICH COME
TO THEIR ATTENTION AND WILL DIRECT TO THE CHIEF OF ENGINEERS, WASHINGTON, D. C.

Use diagram only to obtain numerical values.
To determine magnetic north line, connect the
grid point "P" on the south edge of the map
with the value of the angle between grid
and magnetic north, as plotted on the degree
scale at the north edge of the map.

U.S.G.S.
Historical File
Topographic Division
JAY PEAK, VT.
N4445-W7230/16x15

U.S.G.S.
FILE COPY
Inspection and Editing
HISTORICAL