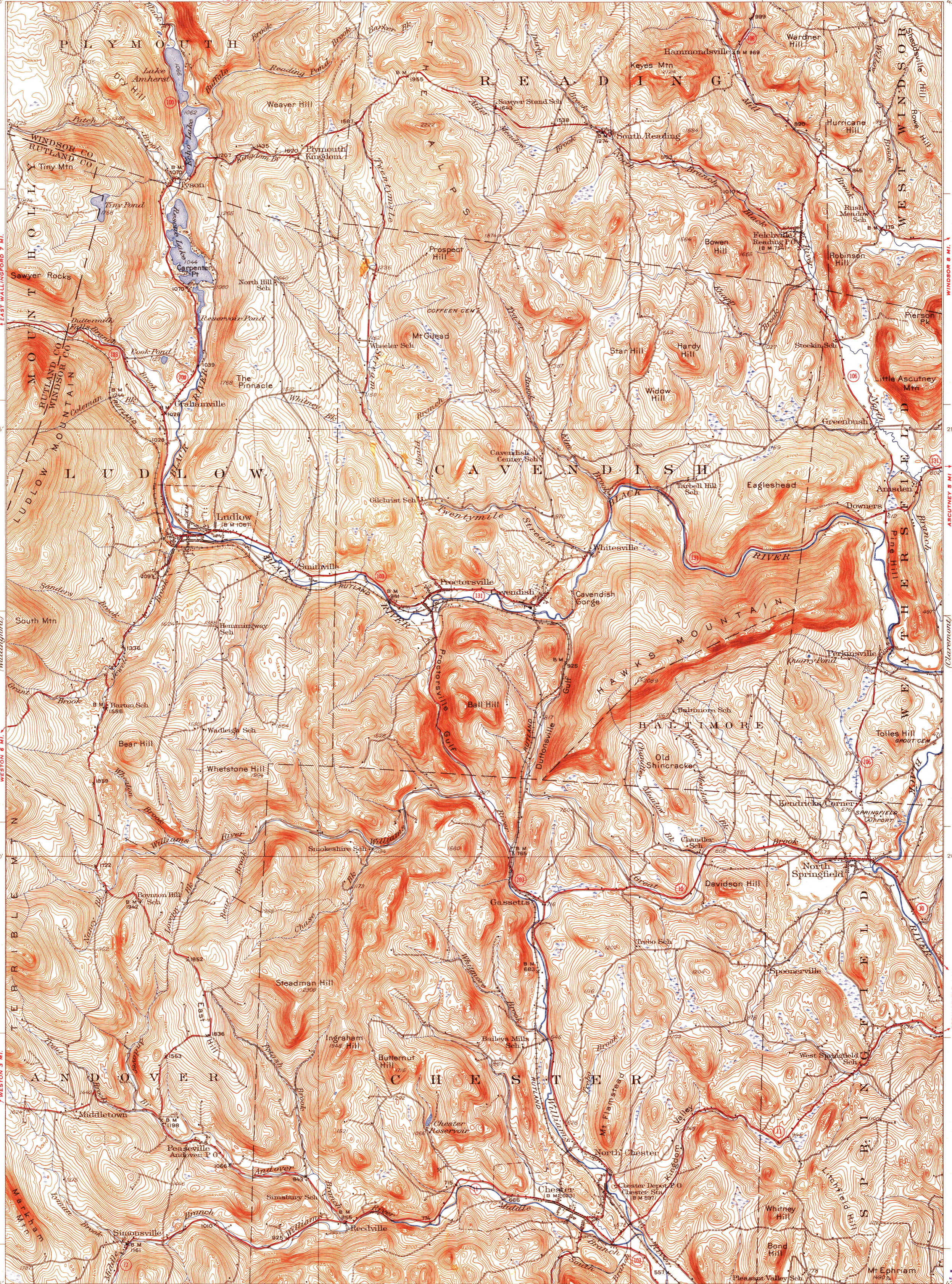


WEST BRIDGEWATER 8 MI. BRIDGEWATER 11 MI.
PLYMOUTH UNION 2 MI. 40'

WHITE RIVER JUNCTION 23 MI. WOODSTOCK 10 MI.



WALLINGFORD 13 MI. RUTLAND 20 MI.
EAST WALLINGFORD 7 MI.

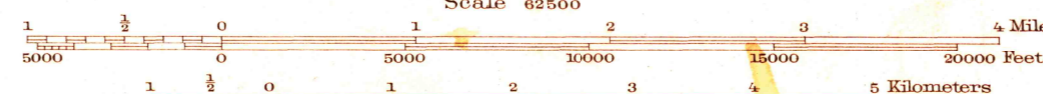
WESTON 6 MI.

WESTON 3 MI.

2335000 YARDS

MANCHESTER 25 MI. 1025000 YARDS

Topography by C. H. Davey, D. H. Watson,
R. Reeves, S. L. Parker, and W. E. Bishop
Surveyed in 1928-1929



Scale 62500
Contour interval 20 Feet
Datum is mean sea level

Polyconic projection, North American datum
5000 yard grid based upon U. S. zone system, A

HARD IMPERVIOUSLY SURFACED ROADS
OTHER MAIN TRAVELED ROADS
1937
UNITED STATES HIGHWAY NUMBER
STATE HIGHWAY NUMBER

LUDLOW, VT.
Edition of 1932
reprinted 1938

15 Miles
14
13
12
11
10
9
8
7
6
5
4
3
2
1
0
1
2
3
4
5
6
7
8
9
10
11
12
13
14
15 Miles

U.S.G.S.
FILE COPY
Historical File
Topographic Division
Historical

4400