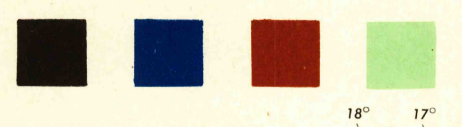


ROUSE POINT

VERMONT 1:62,500

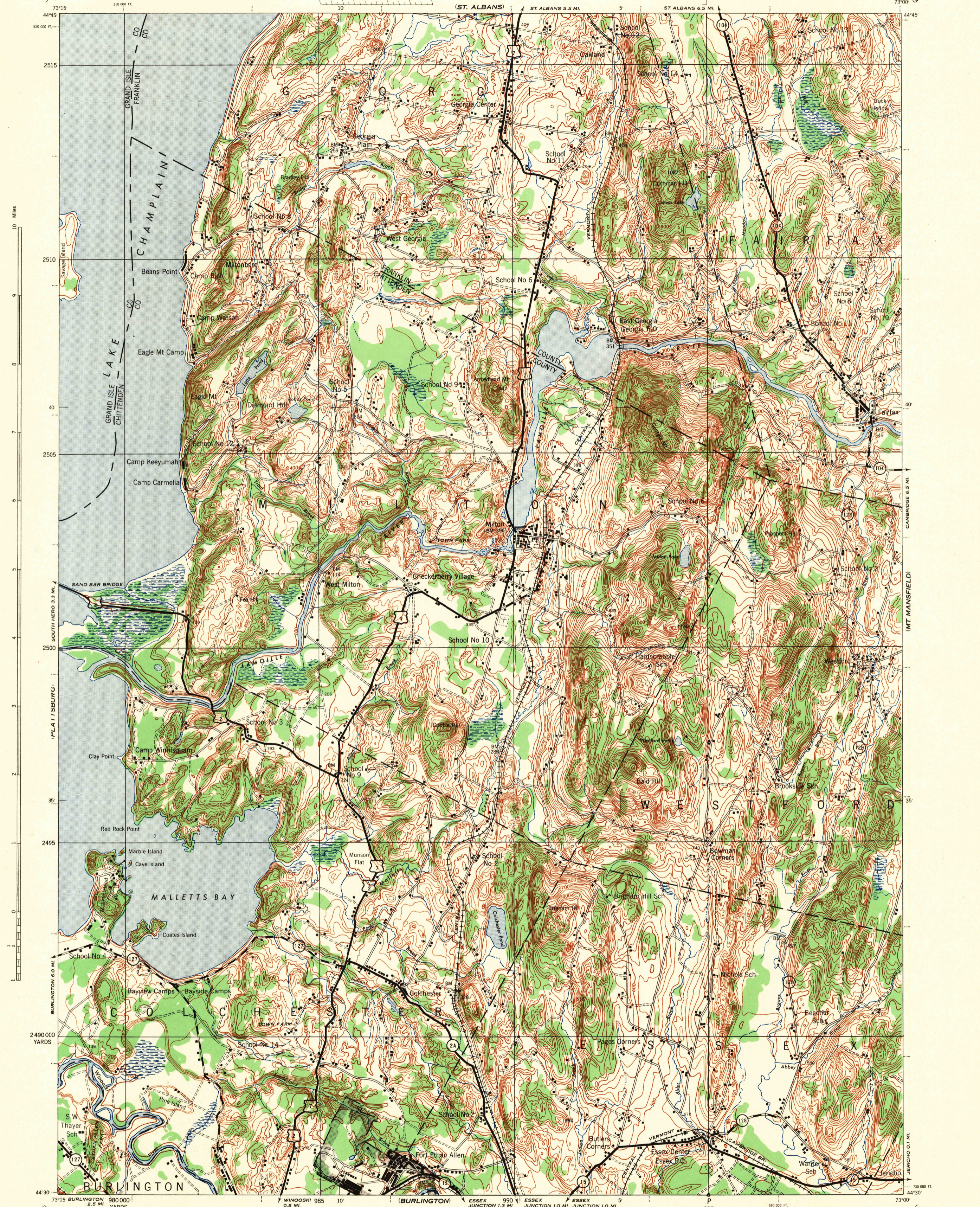


WAR DEPARTMENT
CORPS OF ENGINEERS, U. S. ARMY

FIRST EDITION A.M.S. 1

MILTON QUADRANGLE
15 MINUTE SERIES

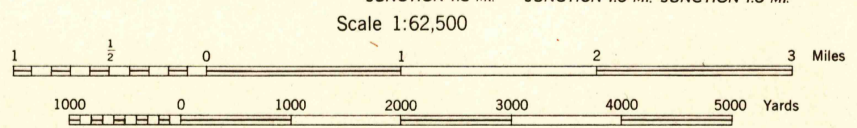
VENOSBURG FALLS



Vertical scale: 10 Miles, 2515, 2510, 2505, 2500, 2495, 2490 000 YARDS

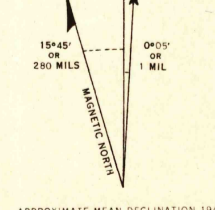
Horizontal scale: 73°15', 73°00', 73°00'

First Edition (A.M.S. 1), 1944.
Prepared under the direction of the Chief of Engineers, U. S. Army, by the Army Map Service, East St. Louis unit, 1943.
Based on U. S. G. S. quadrangle, Milton, 1:62,500 (1915).
Horizontal control by U. S. C. & G. S. and U. S. G. S.
Vertical control by U. S. Geological Survey.
Surveyed in cooperation with the State of Vermont, 1913.
Revised from single lens vertical aerial photographs.
Aerial photography - A. A., Department of Agriculture, 1941.
Approximate Reservation Boundary (October 1943)
Polyconic Projection, North American Datum
ROAD CLASSIFICATION 1944



CONTOUR INTERVAL 20 FEET
DATUM IS MEAN SEA LEVEL

FIVE THOUSAND YARD GRID COMPUTED FROM GRID SYSTEM FOR PROGRESSIVE MAPS IN THE U. S. ZONE 'A' U. S. C. & G. S. SPECIAL PUBLICATION NO. 59
THE LAST THREE DIGITS OF THE GRID NUMBERS ARE OMITTED
VERMONT STATE GRID ZONE IS INDICATED BY DOTTED TICKS OUTSIDE THE NEAT LINE AT 1000 FOOT INTERVALS
NOTE: OFFICERS USING THIS MAP WILL MAKE NECESSARY CORRECTIONS AND ADDITIONS WHICH COME TO THEIR ATTENTION AND MAIL DIRECT TO THE CHIEF OF ENGINEERS, WASHINGTON, D. C.



Use diagram only to obtain numerical values. To determine magnetic north line, connect the pivot point 'P' on the south edge of the map with the value of the angle between GRID NORTH and MAGNETIC NORTH, as plotted on the degree scale of the north edge of the map.

APPROXIMATE MEAN DECLINATION 1944 FOR CENTER OF SHEET
ANNUAL MAGNETIC CHANGE 1 INCREASE

USGS
Historical File
Topographic Division

MILTON, VT.
N4430-W7300/15

FILE COPY
Inspection and Editing.

HISTORICAL

WILLSBORO

CAMELS HUMP