

ST. ALBANS

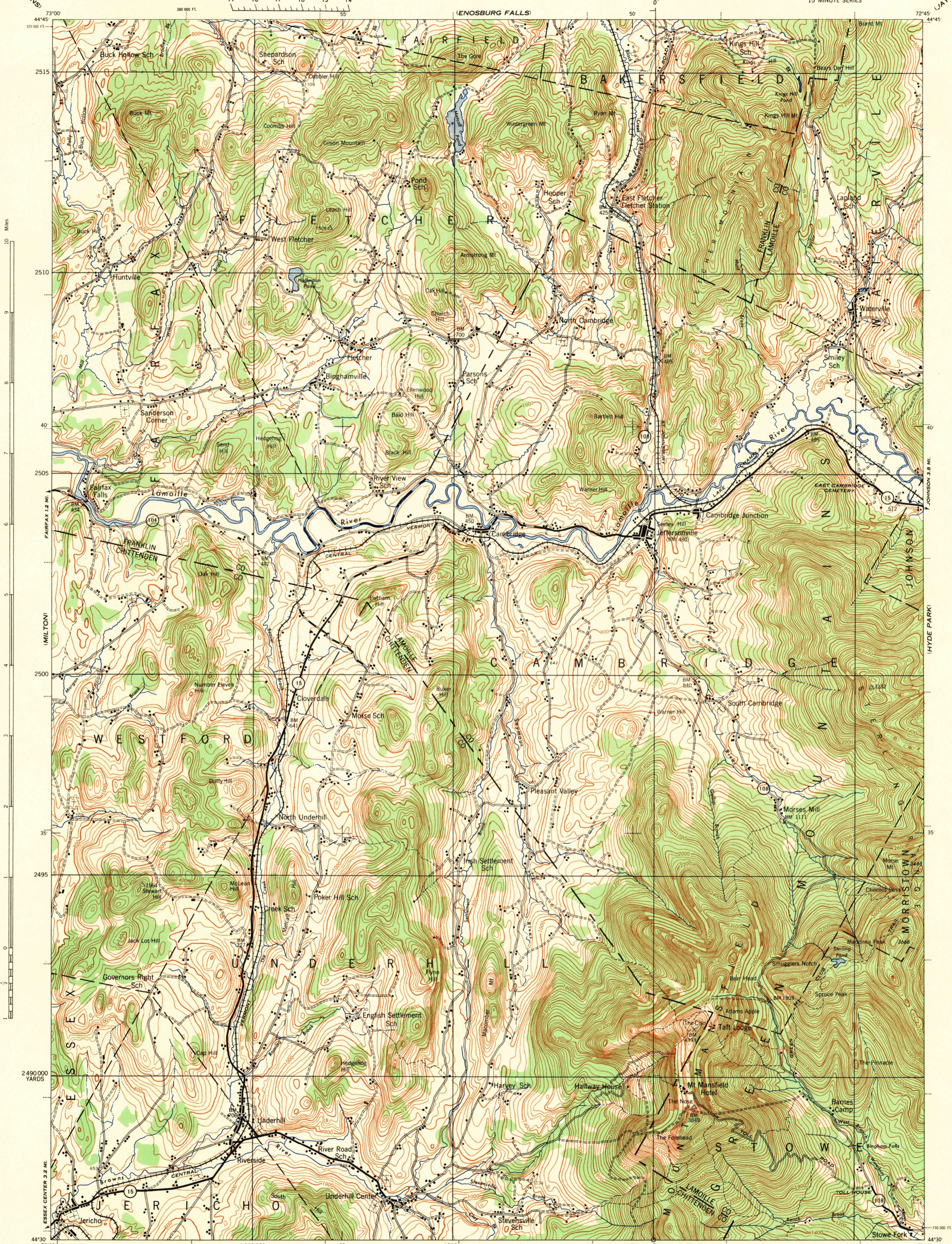
VERMONT 1:62,500

WAR DEPARTMENT  
CORPS OF ENGINEERS, U. S. ARMY

FIRST EDITION-AMS 1

MOUNT MANSFIELD QUADRANGLE  
15 MINUTE SERIES

LAY PEAK



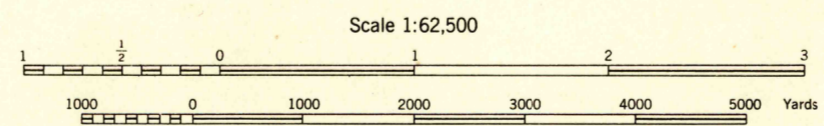
BURLINGTON

First Edition (AMS 1) 1944.

Prepared under the direction of the Chief of Engineers, U. S. Army, by the Army Map Service (SU), U. S. Army, Washington, D. C., 1944.  
 Based on U. S. G. S. quadrangle, Mount Mansfield, 1:62,500 (1927).  
 Control by U. S. Geological Survey.  
 Surveyed in 1924-1925.  
 Revised from controlled mosaic by Lake Survey, Detroit, Michigan.  
 Aerial photography by Army Air Force and Waltz Studio, 1941.  
 Polyconic Projection, North American Datum.

**ROAD CLASSIFICATION 1943**

Tronnable hard surface	Loose-surface graded	U. S. Route
Heavy-duty road	By weather road	(160)
Secondary hard surface	Dirt road	State Route
Light-duty road	State Route	(30)
More than two lanes indicated by note along road with tick at point of change.	3 LANE 4 LANE	



CONTOUR INTERVAL 40 FEET  
DATUM IS MEAN SEA LEVEL

FIVE THOUSAND YARD GRID COMPUTED FROM GRID SYSTEM FOR PROGRESSIVE MAPS IN THE U. S. ZONE A, U. S. C. & G. S. SPECIAL PUBLICATION NO. 59

THE LAST THREE DIGITS OF THE GRID NUMBERS ARE OMITTED

VERMONT STATE GRID ZONE IS INDICATED BY DOTTED TICKS OUTSIDE THE NEXT LINE AT 10,000 FOOT INTERVALS

NOTE: OFFICERS USING THIS MAP WILL WANT PERSON CORRECTIONS AND ADDITIONS WHICH COME TO THEIR ATTENTION AND MAIL DIRECT TO THE CHIEF OF ENGINEERS WASHINGTON, D. C.

APPROXIMATE MEAN DECLINATION 1944 FOR CENTER OF SHEET

ANNUAL MAGNETIC CHANGE 1 INCREASE

Use diagram only to obtain numerical values.

To determine magnetic north line, connect the pivot point "P" on the south edge of the map with the value of the angle between GRID NORTH and MAGNETIC NORTH, as plotted on the degree scale at the north edge of the map.

LEGEND

BRUSH

USGS  
Historical File  
Topographic Division

MOUNT MANSFIELD, VT.

N4430 W7245/15  
U. S. G. S.  
FILE COPY  
Inspection and Editing.

HISTORICAL

MONTPELIER