

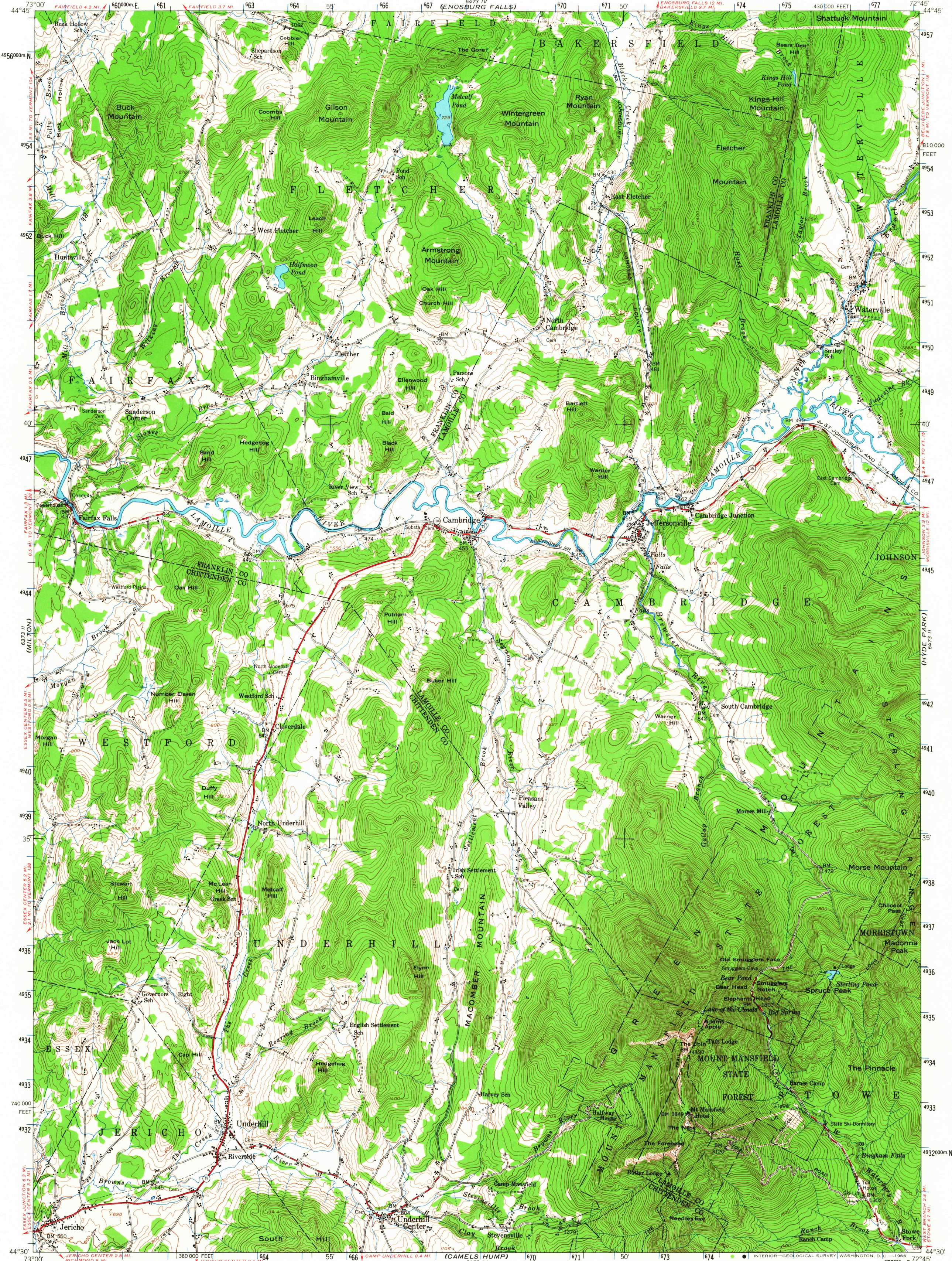
(ST. ALBANS)  
6731

UNITED STATES  
DEPARTMENT OF THE INTERIOR  
GEOLOGICAL SURVEY

UNITED STATES  
DEPARTMENT OF THE ARMY  
CORPS OF ENGINEERS

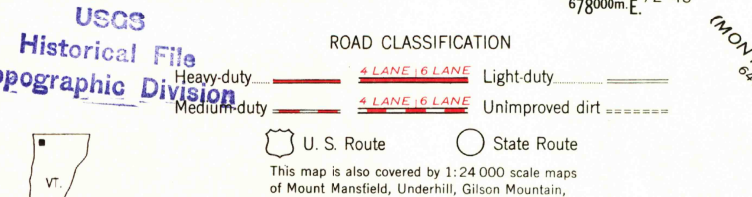
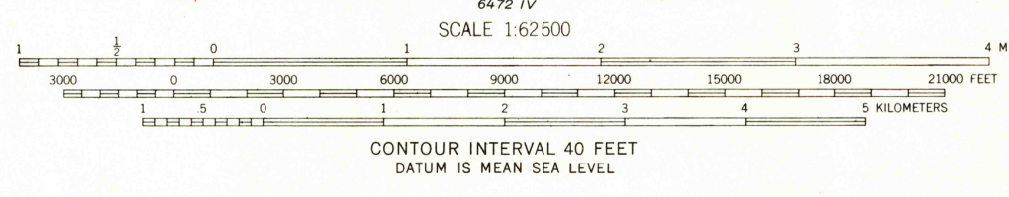
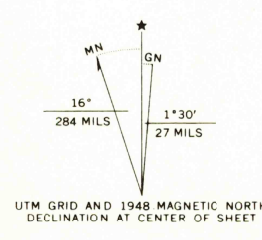
MOUNT MANSFIELD QUADRANGLE  
VERMONT  
15 MINUTE SERIES (TOPOGRAPHIC)

6731  
(JAY PEAK)



(BURLINGTON)  
6732

Mapped by the Army Map Service  
Published for civil use by the Geological Survey  
Control by USGS, USC&GS, and USCE  
Topography from aerial photographs by multiplex methods  
Aerial photographs taken 1947. Field check 1948  
Polyconic projection. 1927 North American datum  
10,000-foot grid based on Vermont coordinate system,  
No distinction is made between dwellings, barns,  
commercial and industrial buildings  
Unchecked elevations are shown in brown  
Locations of all boundaries are approximate  
The Long Trail shown in approximate location  
1000-meter Universal Transverse Mercator grid ticks,  
zone 18, shown in blue



USGS  
Historical File  
Topographic Division

QUADRANGLE LOCATION

MOUNT MANSFIELD, VT.  
N4430-W7245/15

1948

AMS 6473 III-SERIES V713

U.S.G.S.  
FILE COPY  
TOPOGRAPHIC DIVISION

HISTORICAL

6555

(MONTPELIER)  
6731