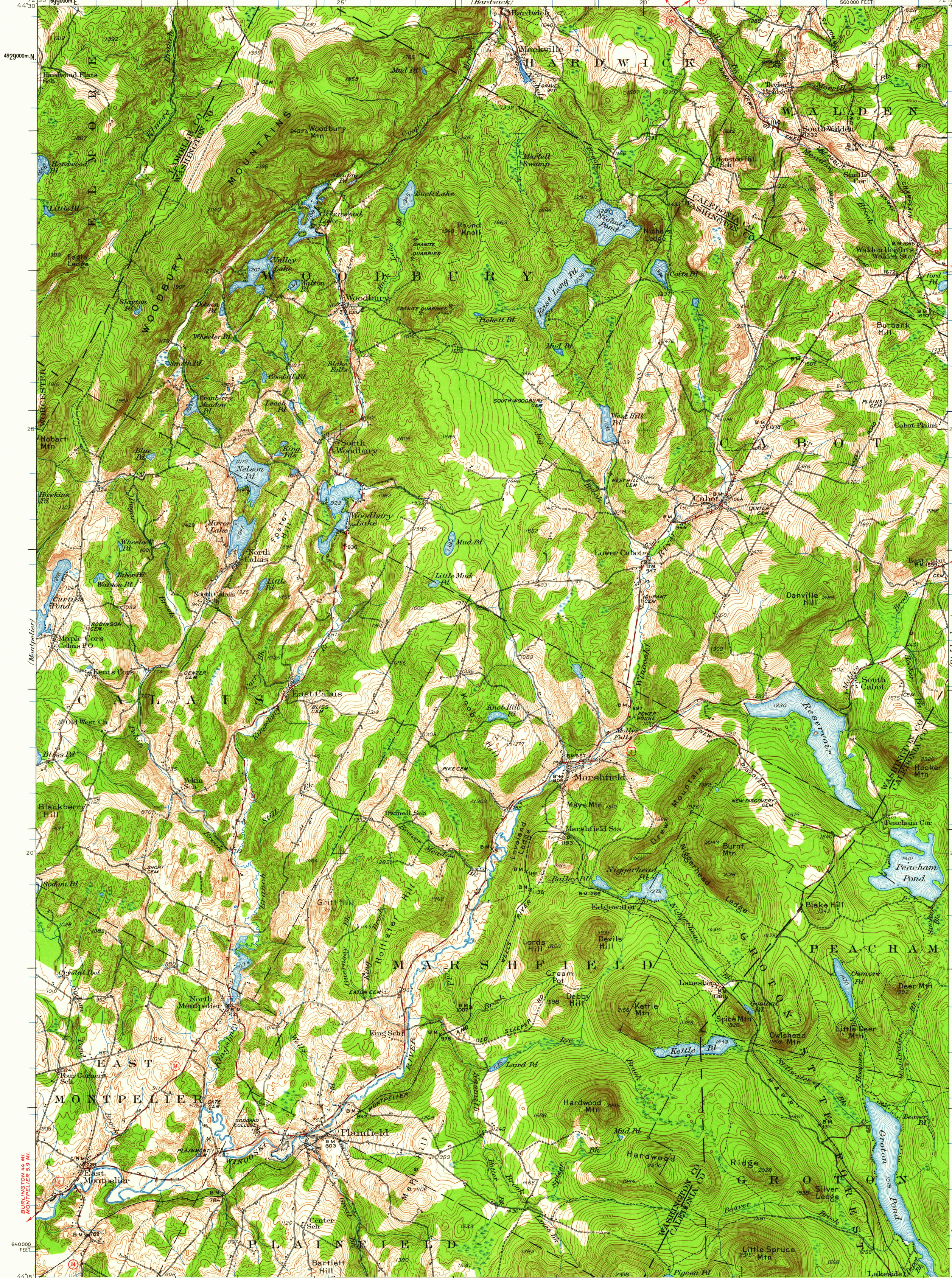


UNITED STATES
DEPARTMENT OF THE INTERIOR
GEOLOGICAL SURVEY

STATE OF VERMONT
REPRESENTED BY THE
STATE GEOLOGIST
(Hardwick)

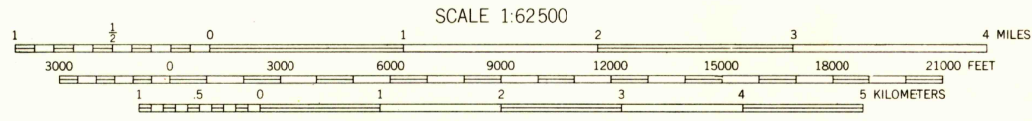
PLAINFIELD QUADRANGLE
VERMONT
15-MINUTE SERIES (TOPOGRAPHIC)
560 000 FEET



Mapped, edited, and published by the Geological Survey
Control by USGS and USC&GS
Topography by plane-table surveys 1939-1940. Revised 1953
Polyconic projection. 1927 North American datum
10,000-foot grid based on Vermont coordinate system
1000-meter Universal Transverse Mercator grid ticks,
zone 18, shown in blue

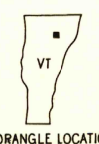
BARRE 3.7 MI.
WHITE RIVER JUNCTION 54 MI.

APPROXIMATE MEAN
DECLINATION, 1953



CONTOUR INTERVAL 20 FEET
DATUM IS MEAN SEA LEVEL

FOR SALE BY U.S. GEOLOGICAL SURVEY, WASHINGTON 25, D. C.
A FOLDER DESCRIBING TOPOGRAPHIC MAPS AND SYMBOLS IS AVAILABLE ON REQUEST



QUADRANGLE LOCATION

U.S. ROUTE
State Route
Unimproved dirt
Medium-duty
Light-duty
RICKER MILLS 1.5 MI.
WELLS RIVER JUNC. U.S. 51 14 MI.
ROAD CLASSIFICATION
USGS
Historical File
Topographic Division
PLAINFIELD, VT.
N 4415-W 7215/15
1953

U.S.G.S.
FILE COPY
TOPOGRAPHIC DIVISION

HISTORICAL

DEC 5 1961

5720