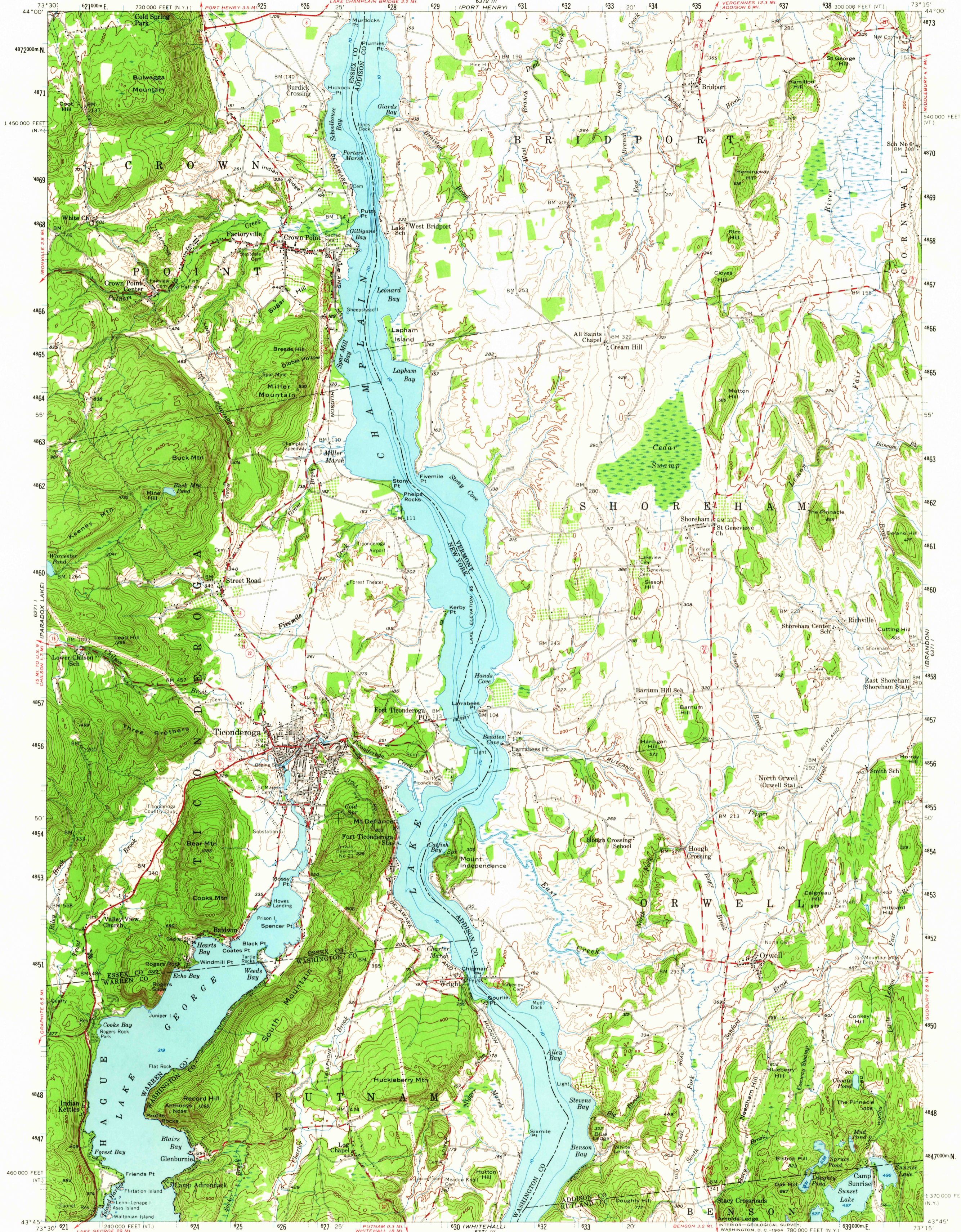


UNITED STATES
DEPARTMENT OF THE INTERIOR
GEOLOGICAL SURVEY

TICONDEROGA QUADRANGLE
VERMONT-NEW YORK
15 MINUTE SERIES (TOPOGRAPHIC)



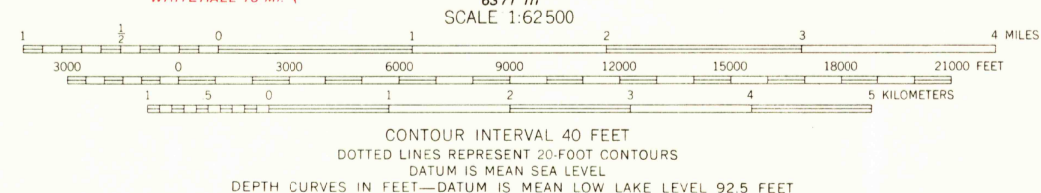
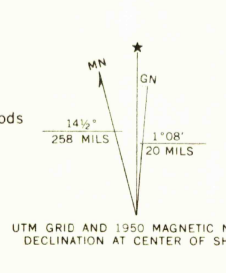
Mapped, edited, and published by the Geological Survey

Control by USGS and USC&GS

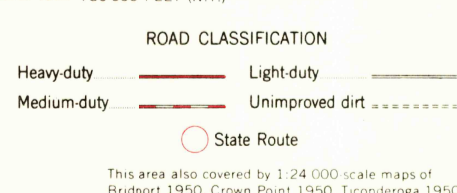
Compiled in 1959 from 1:24 000 scale maps of
Bridport, Crown Point, Ticonderoga, and
Orwell 7.5 minute quadrangles, surveyed 1949-1950

Topography from aerial photographs by photogrammetric methods
and by planetarium surveys. Aerial photographs taken 1942
Hydrography in Lake Champlain by U. S. Lake Survey 1947

Polyconic projection. 1927 North American datum
10,000-foot grids based on Vermont coordinate system,
and New York coordinate system, east zone
1000-meter Universal Transverse Mercator grid ticks,
zone 18, shown in blue



THIS MAP COMPLIES WITH NATIONAL MAP ACCURACY STANDARDS
FOR SALE BY U. S. GEOLOGICAL SURVEY, WASHINGTON 25, D. C.
A FOLDER DESCRIBING TOPOGRAPHIC MAPS AND SYMBOLS IS AVAILABLE ON REQUEST



ROAD CLASSIFICATION
Heavy-duty ——— Light-duty ———
Medium-duty - - - - - Unimproved dirt - - - - -
○ State Route

AMS 6371 IV—SERIES V713

HISTORICAL
OCT 28 1964
USGS
Historical File
Topographic Division
TICONDEROGA, VT.—N. Y.
N4345—W7315/15
1950
G275