

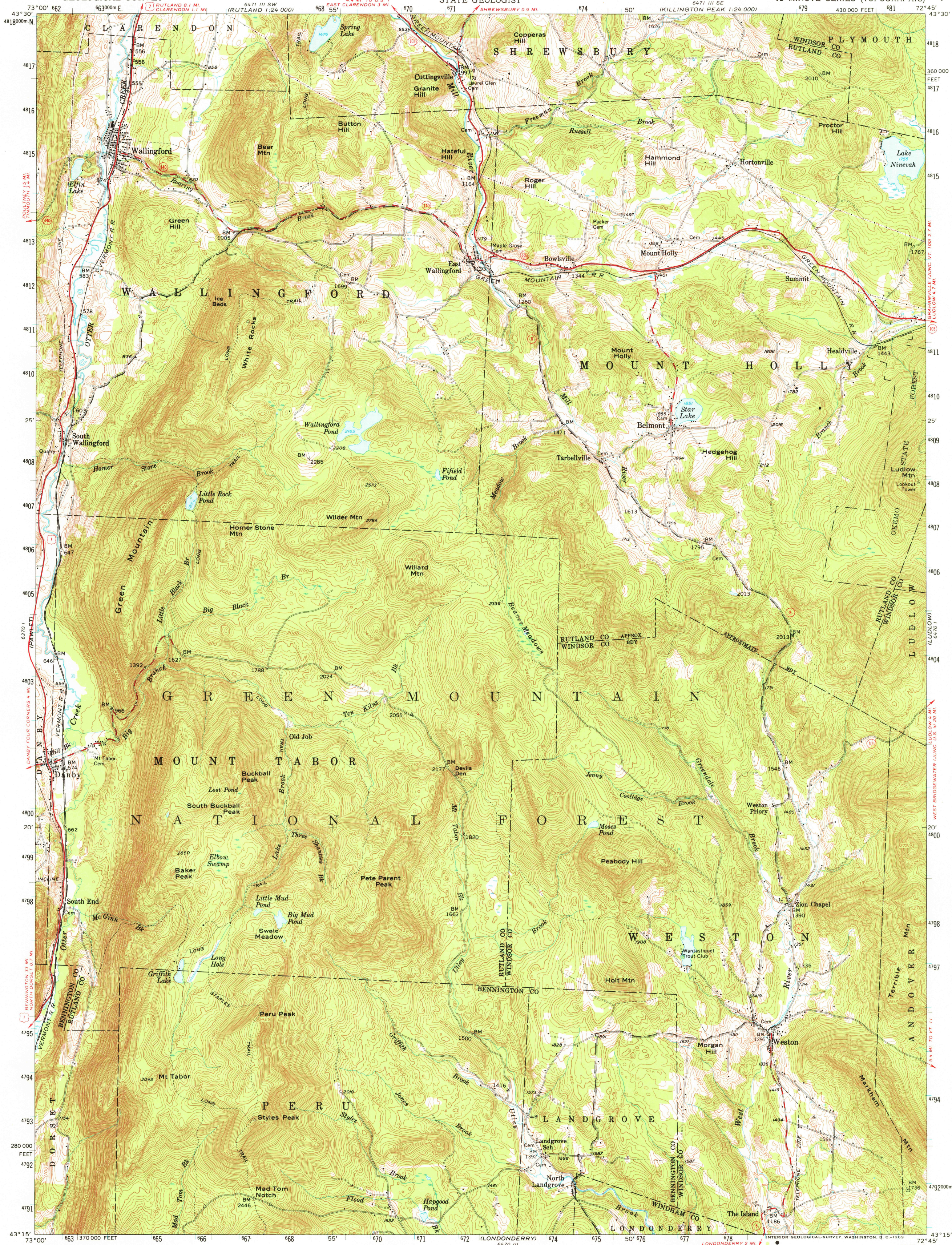
(WES) 671.1 SE  
1:24,000

(WOODSTOCK)  
647.1 II

UNITED STATES  
DEPARTMENT OF THE INTERIOR  
GEOLOGICAL SURVEY

STATE OF VERMONT  
REPRESENTED BY THE  
STATE GEOLOGIST

WALLINGFORD QUADRANGLE  
VERMONT  
15 MINUTE SERIES (TOPOGRAPHIC)



Mapped, edited, and published by the Geological Survey

Control by USGS, USC&GS, and U. S. Forest Service

Topography from aerial photographs by photogrammetric methods

Aerial photographs taken 1954. Field check 1955

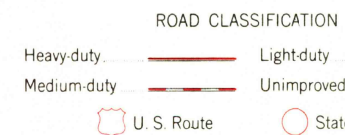
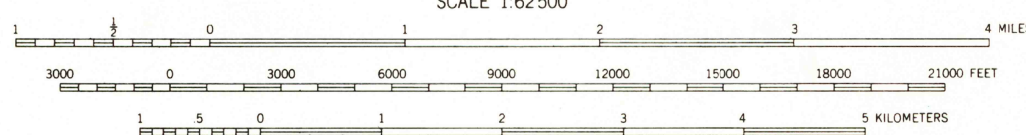
Polyconic projection. 1927 North American datum

10,000-foot grid based on Vermont coordinate system

1000-meter Universal Transverse Mercator grid ticks,

zone 18, shown in blue

Unchecked elevations are shown in brown



WALLINGFORD, VT.  
N4315—W7245/15

1955

AMS 6470 IV—SERIES V713

RETURN TO:

USGS NMD HISTORICAL MAP ARCHIVES

THIS MAP COMPLIES WITH NATIONAL MAP ACCURACY STANDARDS  
FOR SALE BY U.S. GEOLOGICAL SURVEY, WASHINGTON, D.C. 20242  
A FOLDER DESCRIBING TOPOGRAPHIC MAPS AND SYMBOLS IS AVAILABLE ON REQUEST