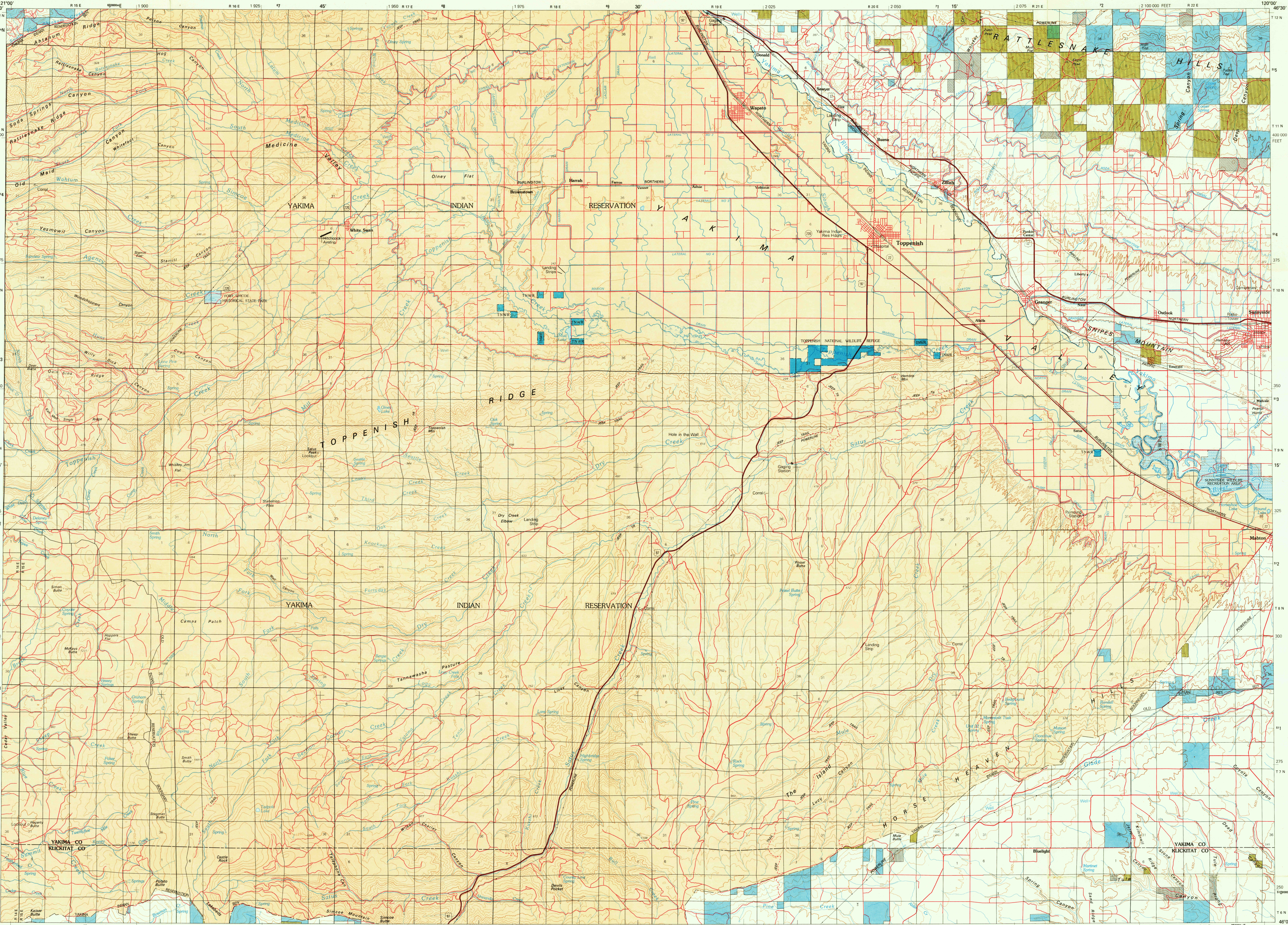


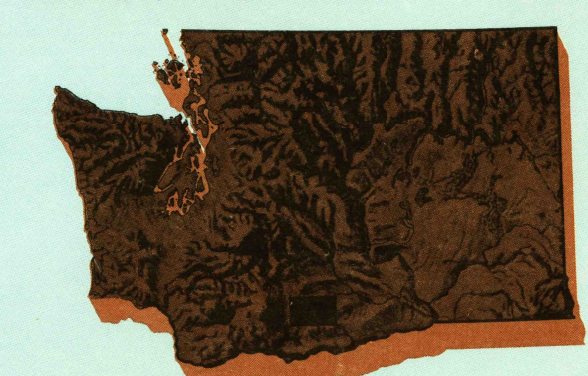
TOPPENISH, WASHINGTON

30X60 MINUTE SERIES (TOPOGRAPHIC)



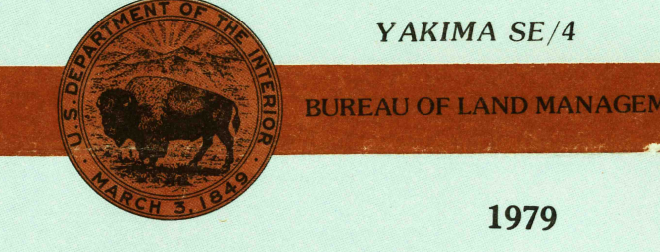
FILE COPY

1:100 000-scale metric topographic map of Toppenish WASHINGTON



30 X 60 MINUTE QUADRANGLE SHOWING

- Contours and elevations in meters
Highways, roads and other manmade structures
Water features
Geographic names



1979

Edited and published by the Bureau of Land Management

Base map prepared by the U.S. Geological Survey. Compiled from USGS 1:250,000-scale topographic maps dated 1958-75. Flanery revised from aerial photographs taken 1975, and other source data. Revised information not field checked. Map edited 1979.

CONTOUR INTERVAL 50 METERS WITH SUPPLEMENTARY CONTOURS AT 10-METER INTERVALS NATIONAL GEODETIC VERTICAL DATUM OF 1929

THIS MAP COMPLES WITH NATIONAL MAP ACCURACY STANDARDS

Table with conversion factors (Meters to Feet), declination diagram, and adjoining maps (1-8).

FOR SALE BY U.S. GEOLOGICAL SURVEY, DENVER, COLORADO 80225 OR RESTON, VIRGINIA 22096 and BLM STATE OFFICE, PORTLAND, OR 97208

Topographic Map Symbols

- Primary highway, hard surface
Secondary highway, hard surface
Light duty road, principal street, hard or improved surface
Other road or street, track
Route marker: Interstate, U. S., State
Railroad: standard gauge, narrow gauge
Bridge, overpass, underpass
Tunnel: road, railroad
Built up area, locality, elevation
Airport: landing field, landing strip
National boundary
State boundary
County boundary
National or State reservation boundary
Land grant boundary
U. S. public lands survey: range, township, section
Range, township, section line: projected
Power transmission line: pipeline
Dam: dam with lock
Cemetery: building
Windmill: water well, spring
Mine shaft: ad or cone mine, quarry, gravel pit
Campground: picnic area, U. S. location monument
Ruins: cliff dwelling
Distorted surface: strip mine, lava, sand
Contours: index, intermediate, supplementary
Bathymetric contours: index, intermediate
Streams: lake, perennial, intermittent
Rapids, large and small; falls, large and small
Area to be submerged; marsh, swamp
Land subject to controlled inundation

NOTE TO MAP USERS
The surface and minerals management status depicted on this map is based on general planning and management tasks. Some of the lands and mineral rights, may have been shown as patented lands due to the lack of information available to BLM with respect to the nature of acquisition. Users who have filed an appeal or records in the respective offices of the Bureau of Land Management or other responsible Federal agencies should be checked for up-to-date status on any specific tract of land. Inquiries on the BLM maps should be referred to the respective Bureau of Land Management office from which the maps were obtained.

Table: MINERALS OWNED BY THE FEDERAL GOVERNMENT. Lists symbols for All minerals, Coal only, Oil and Gas only, and No symbol indicates no Federal minerals.

Table: BUREAU OF LAND MANAGEMENT LAND STATUS LEGEND. Lists symbols for Public Lands (Administered by Bureau of Land Management), National Parks and Monuments, Indian Lands or Reservations, National Forest, National Grasslands, and various other land statuses.

Table: LAND STATUS LEGEND. Lists symbols for Bankhead-Jones Land Use Lands, Tennessee Valley Authority, Patented Lands, State Lands, Water and Power Resources Service, Federal Agency Protective Withdrawals, Department of Energy, Radio & Air Facilities, and Miscellaneous.

TOPPENISH, WASHINGTON N4600-W12000/30X60 1979

Surface Management Status, 1980

Mineral Management Status, 1980

RETURN TO: USGS NATIONAL MAP ARCHIVES RESTON, VA 22092

