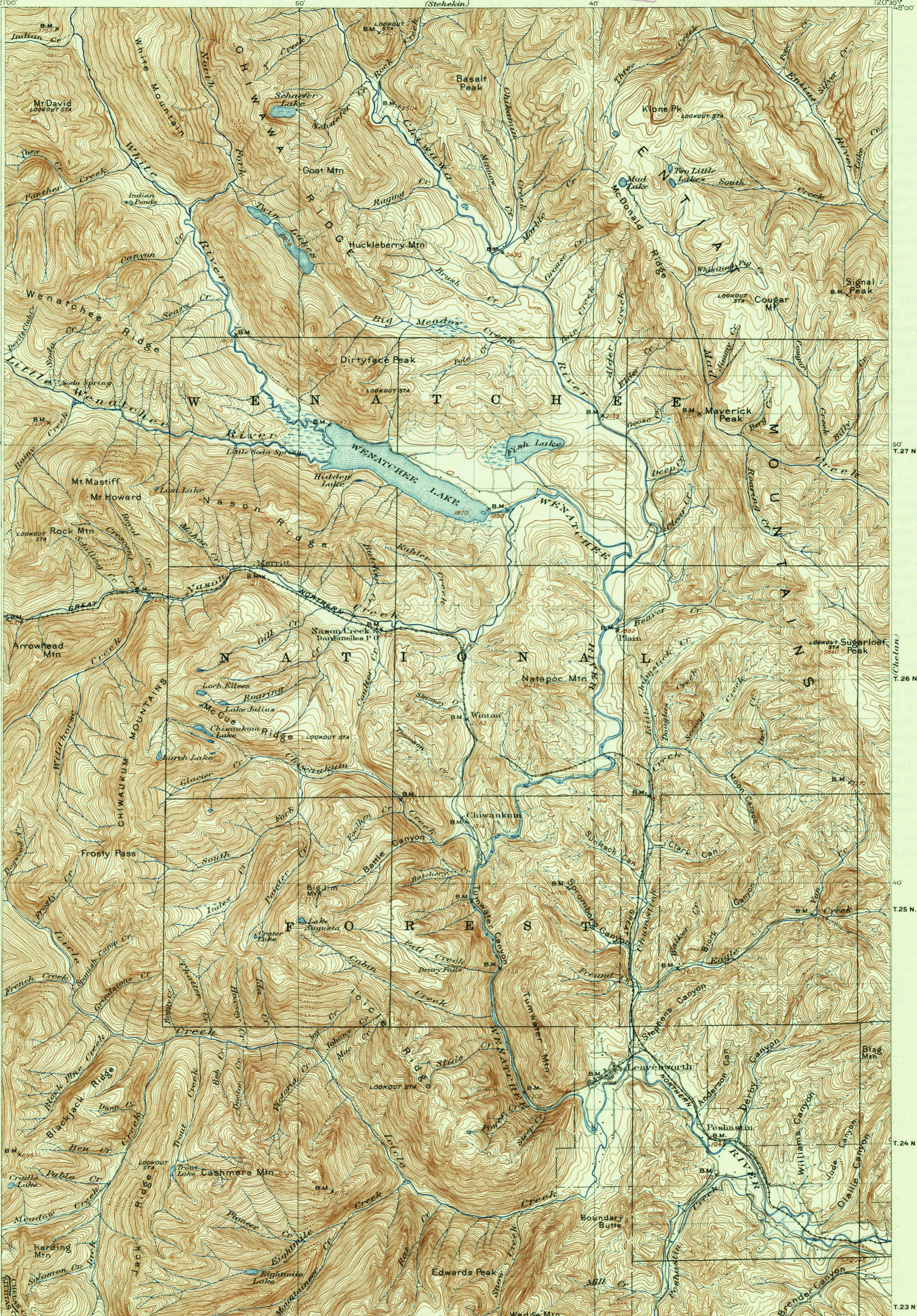


U. S. G. S.
FILE COPY
Inspection and Editing.



U. S. G. S.
FILE COPY
Inspection and Editing.

ENGRAVED JUNE 1903 BY U.S.G.S.
R. U. Goode, Geographer in charge.
Triangulation by A. H. Sylvester.
Topography by R. A. Farmer.
Surveyed in 1900-01.
Railroad from Winton to Peshastin added
from information by Great Northern R.R.



U. S. G. S.
FILE COPY
Inspection and Editing.

CHIWAUKUM, WASH.
Edition of Mar. 1904, reprinted 1934.
Polyconic projection.

NOV 30 1934 (1975)

1975