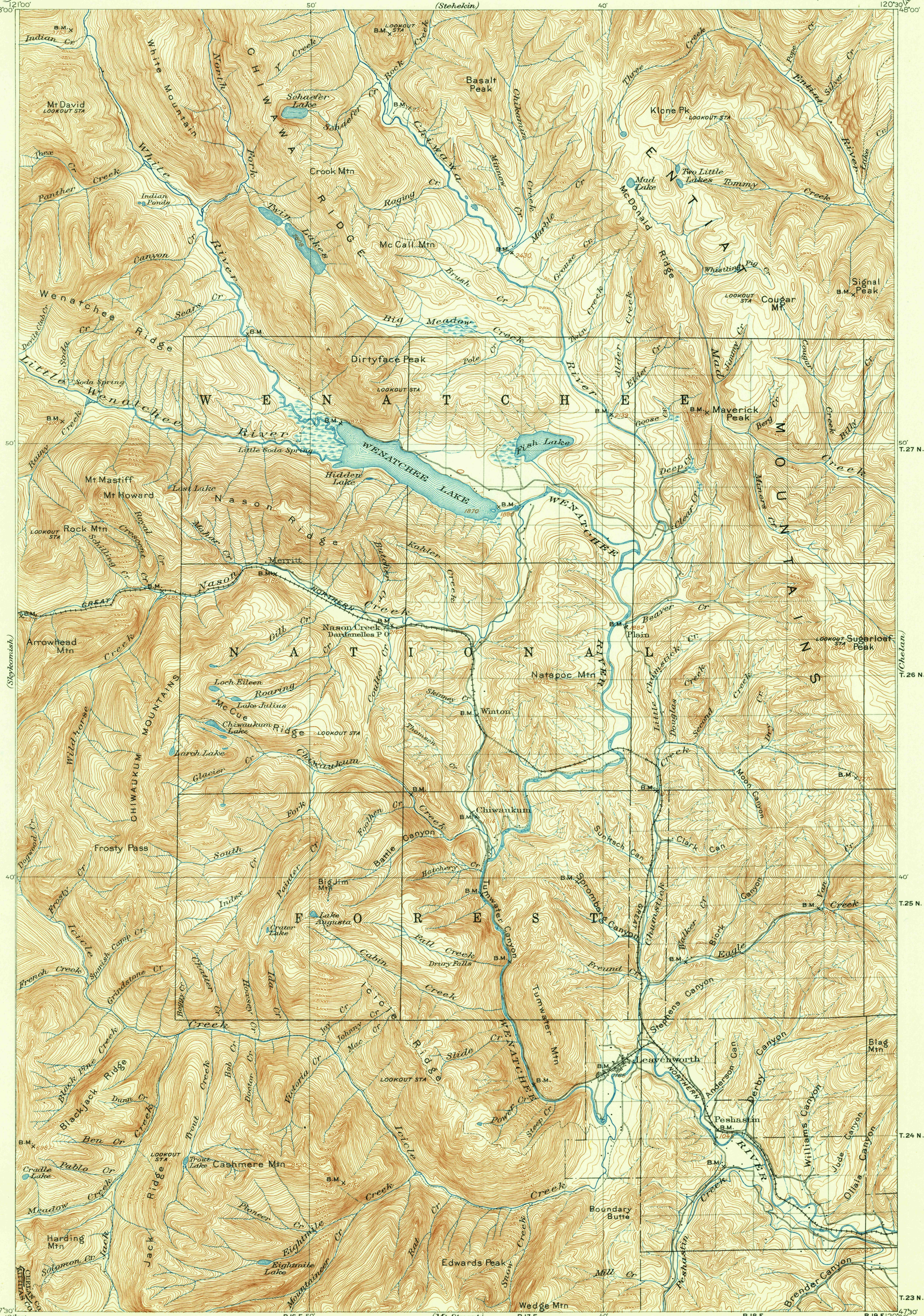


U.S.G.S.  
FILE COPY  
Inspection and Editing.



R. U. Goode, Geographer in charge.  
Triangulation by A. H. Sylvester.  
Topography by R. A. Farmer.  
Surveyed in 1900-01.  
Railroad from Winton to Peshastin added  
from information by Great Northern R.R.

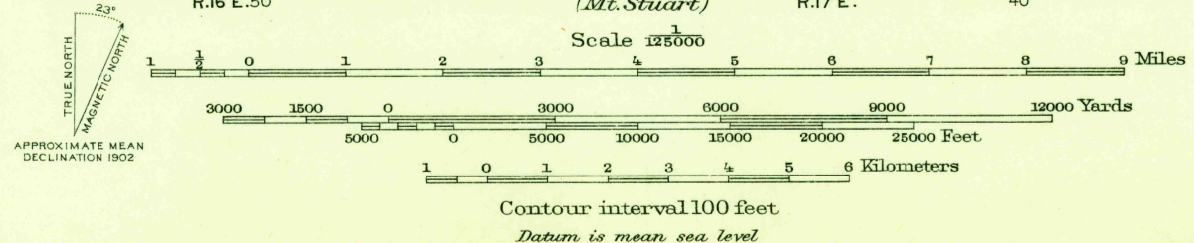


DIAGRAM OF TOWNSHIP

6	5	4	3	2	1
7	8	9	10	11	12
13	14	15	16	17	18
19	20	21	22	23	24
25	26	27	28	29	30
31	32	33	34	35	36

U.S.G.S.  
FILE COPY  
Inspection and Editing.

CHIWAUKUM, WASH.  
N 4730-W 12030/30

FOR SALE BY U.S. GEOLOGICAL SURVEY, FEDERAL CENTER, DENVER, COLORADO OR WASHINGTON 25, D.C.  
A FOLDER DESCRIBING TOPOGRAPHIC MAPS AND SYMBOLS IS AVAILABLE ON REQUEST

USGS  
Historical File  
Topographic Division