

U.S.G.S. FILE COPY  
Inspection and Editing.

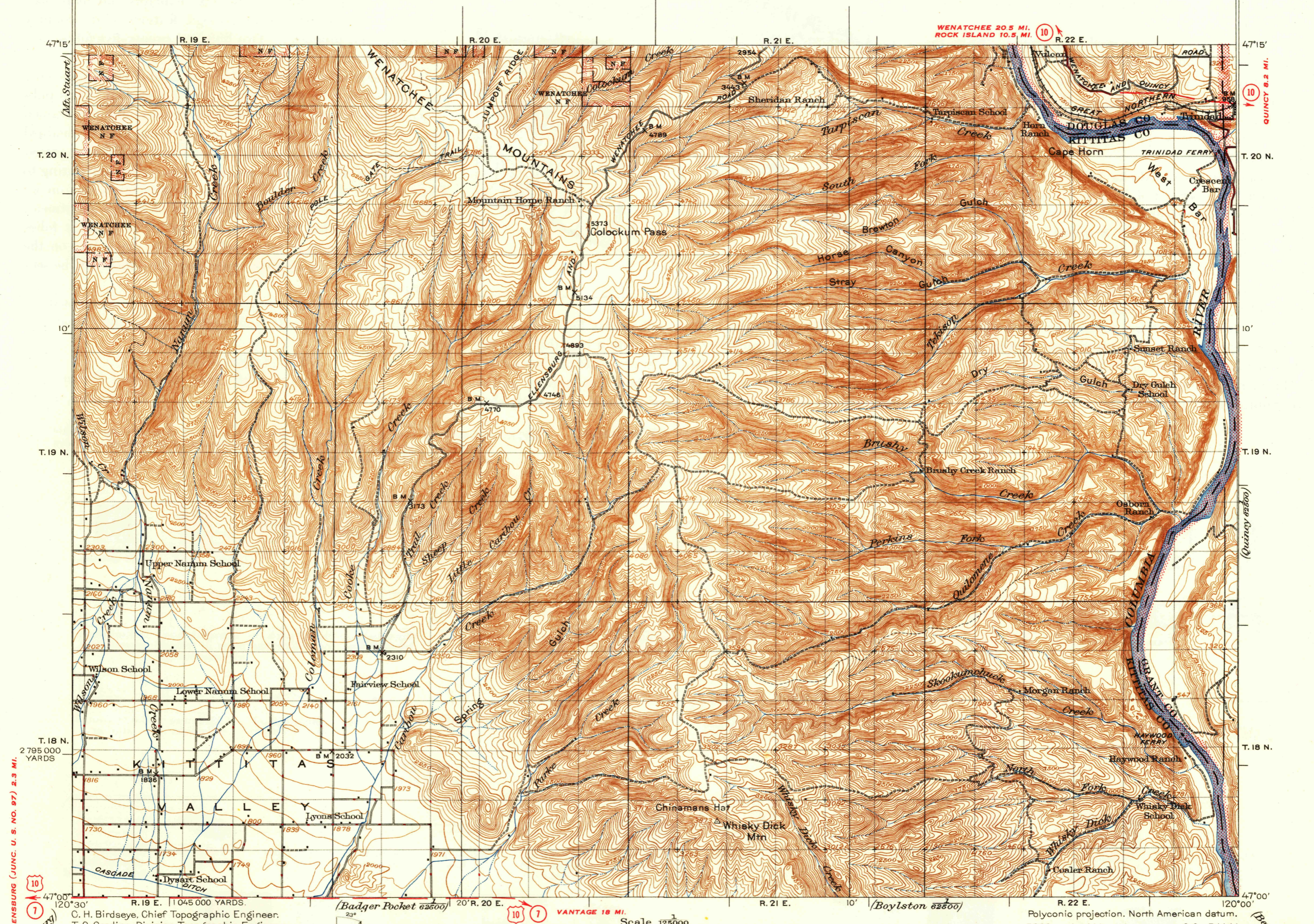
UNITED STATES  
DEPARTMENT OF THE INTERIOR  
GEOLOGICAL SURVEY

STATE OF WASHINGTON  
REPRESENTED BY THE  
DEPARTMENT OF CONSERVATION AND DEVELOPMENT  
(Chelan)

WASHINGTON  
COLOCKUM PASS QUADRANGLE  
120°00' 47°30'

THIS AREA IS SHOWN ON THE MAP OF WENATCHEE  
QUADRANGLE, SURVEYED IN 1911-1913, SCALE 1:62500

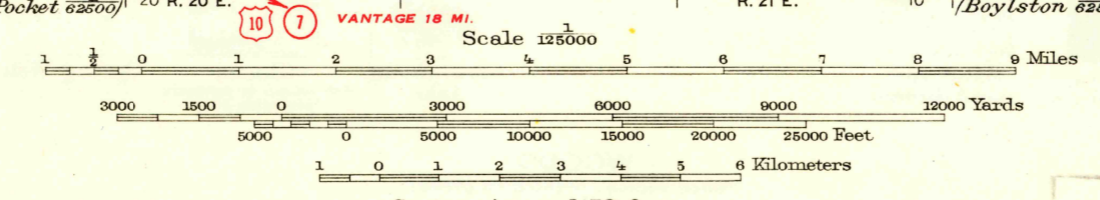
THIS AREA IS SHOWN ON THE MAP OF MALAGA  
QUADRANGLE, SURVEYED IN 1911-1912, SCALE 1:62500



ELLENSBURG (JUNC. U.S. NO. 97) 2.3 MI.  
ELLENSBURG

C. H. Birdseye, Chief Topographic Engineer.  
T. G. Gerdine, Division Topographic Engineer.  
Topography by R. W. Berry, Basil Duke,  
and W. G. Carson.  
Control by R. B. Robertson, C. H. Semper,  
and R. A. Farmer.  
Surveyed in 1919-1920.

APPROXIMATE MEAN  
DECLINATION, 1920



Polyconic projection, North American datum.  
5000 yard grid based upon zone G for P. M. M.

WASH.  
COLOCKUM PASS  
Edition of 1922,  
reprinted 1947  
N4700-W12000/30

ROAD CLASSIFICATION  
1946  
Dependable hard-surface heavy-duty road U.S. Route 15  
Loose-surface graded U.S. Route 15  
Secondary hard-surface all-weather road State Route 26  
Dirt road State Route 26  
More than two lanes indicated along road with tick at point of change 2 LANE, 4 LANE

U.S.G.S. FILE COPY  
Inspection and Editing.

USGS Historical File  
Topographic Division  
JUL 16 1947

2085