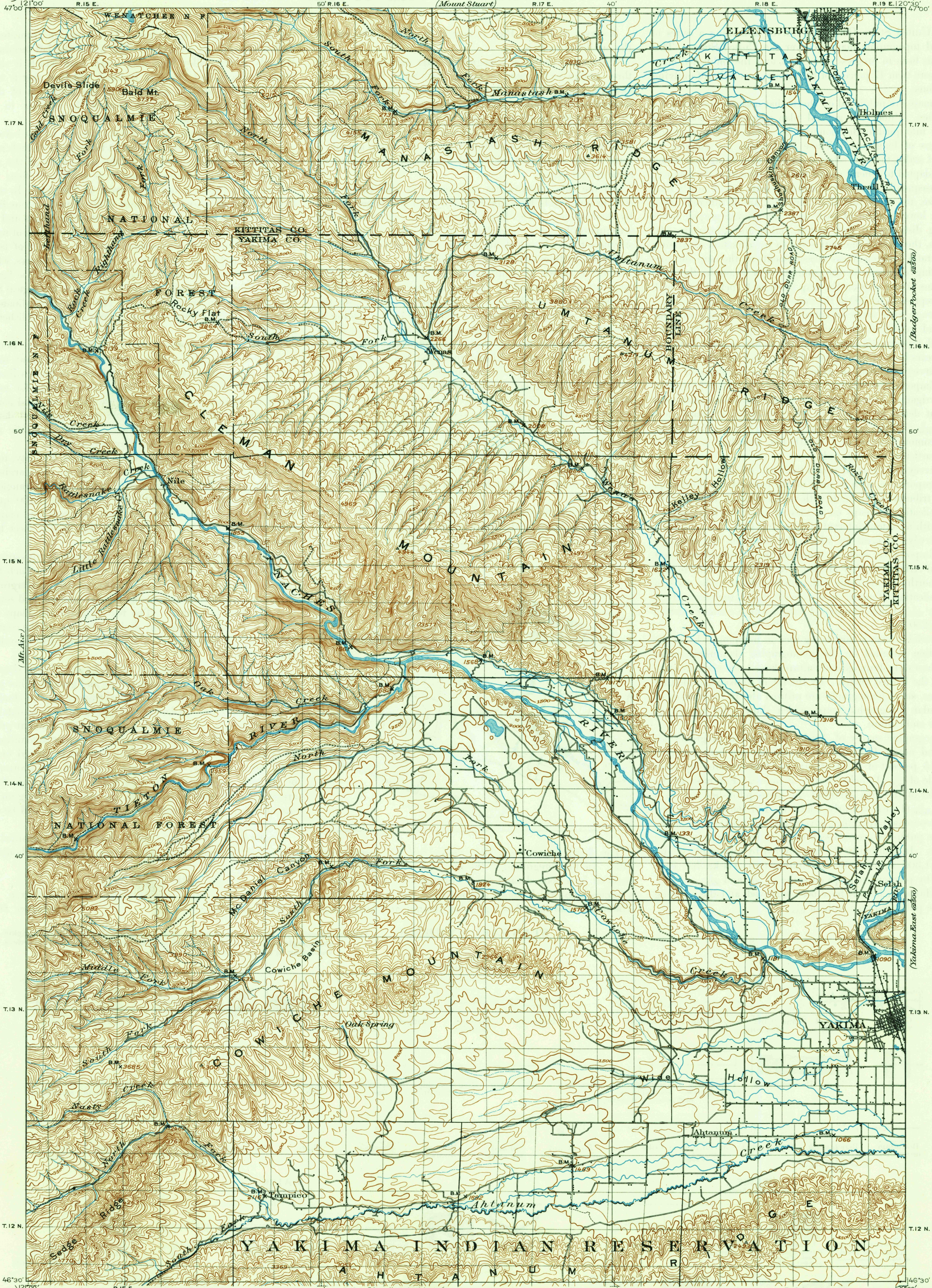


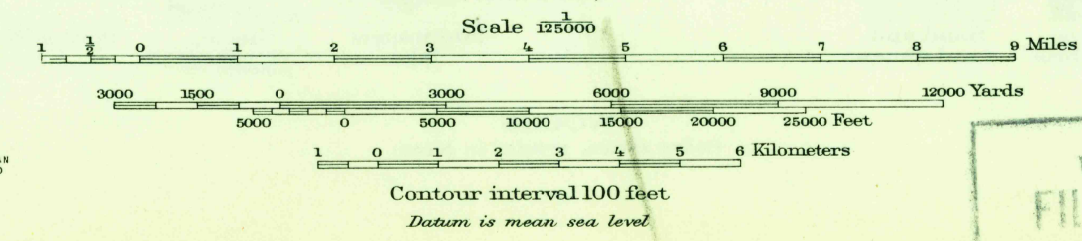
U.S.G.S.
FILE COPY
Inspection and Billing

UNITED STATES
DEPARTMENT OF THE INTERIOR
GEOLOGICAL SURVEY

WASHINGTON
ELLENSBURG QUADRANGLE



(Mt. Adams) 121°00' R.15 E. 50' R.16 E. (Mount Stuart) R.17 E. 40' R.18 E. 120°30' (Columbia Falls)
T.17 N. 47°00'
T.16 N. 46°30'
T.15 N. 46°00'
T.14 N. 45°30'
T.13 N. 45°00'
T.12 N. 44°30'
46°30' (Mt. Adams) R.15 E. 50' R.16 E. (White Swan) R.17 E. 40' R.18 E. 120°30' (Zillah)



Edition of May 1901, reprinted 1947
Polyconic projection
To join White Swan map use
dotted projection corners

WASH.
ELLENSBURG
N4630-W12030/30

U.S.G.S.
FILE COPY
Inspection and Billing

USGS
Historical File
Topographic Division

FEB 25 1947

2100