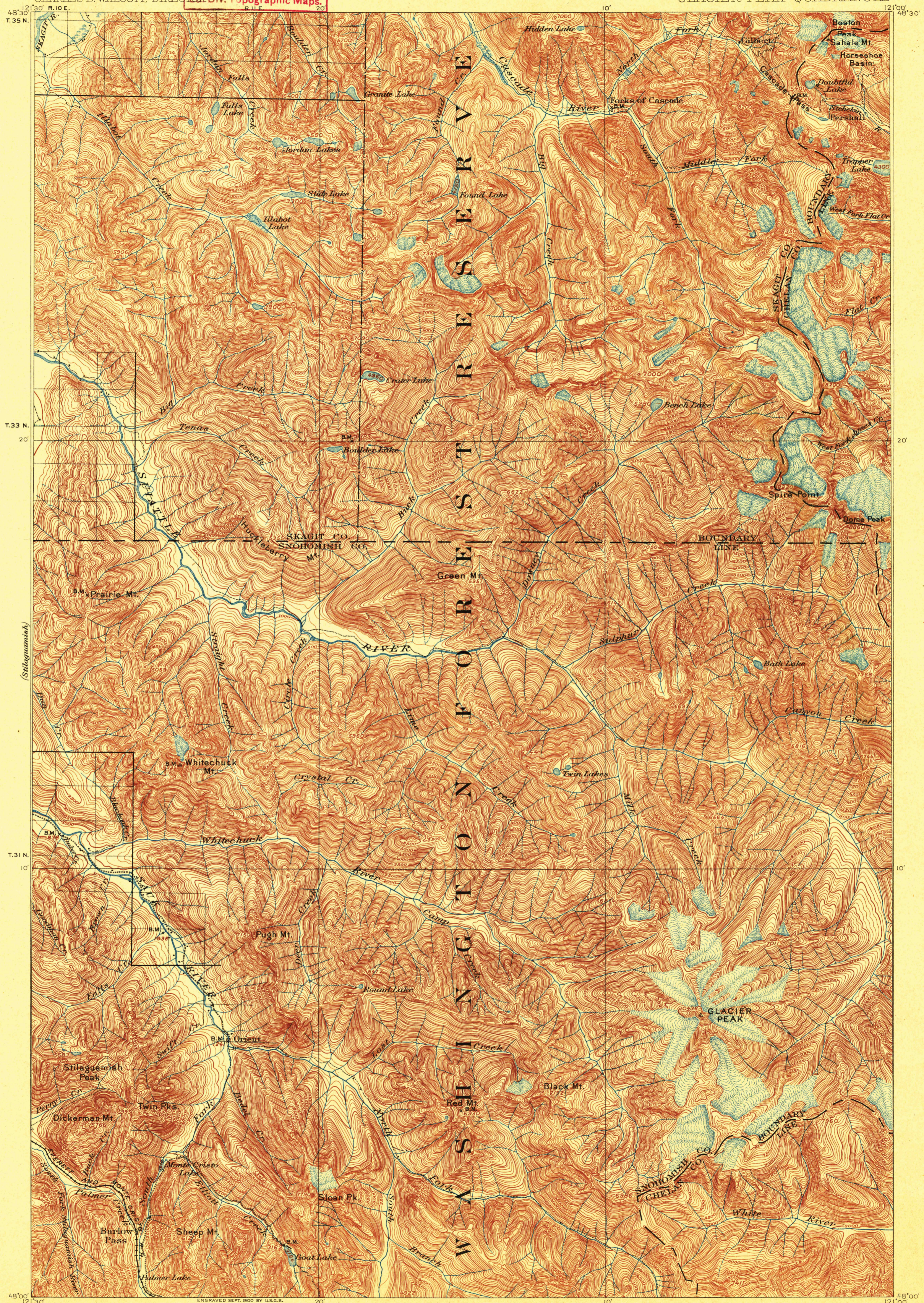


U. S. G. S.  
**FILE COPY**

U.S. GEOLOGICAL SURVEY  
CHARLES D. WALCOTT, DIRECTOR  
Ed. Div. Topographic Maps.

TOPOGRAPHIC SHEET

WASHINGTON  
GLACIER PEAK QUADRANGLE



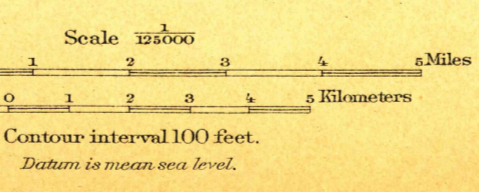
48°30' T.35 N.  
T.33 N.  
T.31 N.  
48°00' T.30 N.

121°00' W.10 E.  
W.10 E.  
W.10 E.  
121°30' W.15 E.

ENGRAVED SEPT. 1900 BY U.S.G.S.  
R.U. Goode, Geographer in charge.  
Triangulation by A.H. Sylvester.  
Topography by T.G. Gardine and E.C. Barnard.  
Surveyed in 1897-99.

Barnard  
Gardine

U. S. G. S.  
**FILE COPY**  
Ed. Div. Topographic Maps.



USGS  
Historical File  
Topographic Division

U.S. Geological Survey,  
JUN 29 1901  
Ed. Div. Topographic Maps.

Edition of May 1901.

2560  
GLACIER PEAK