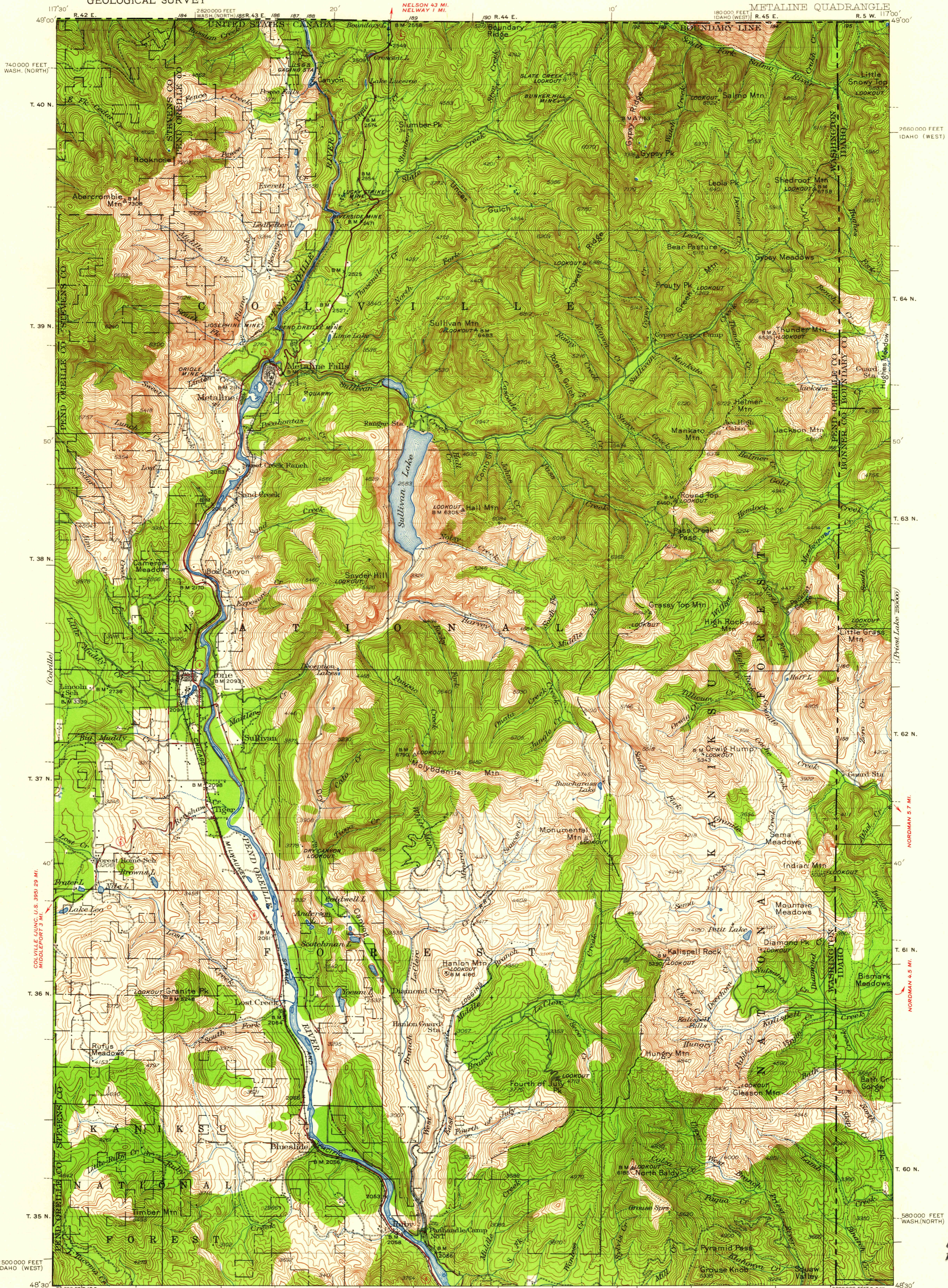
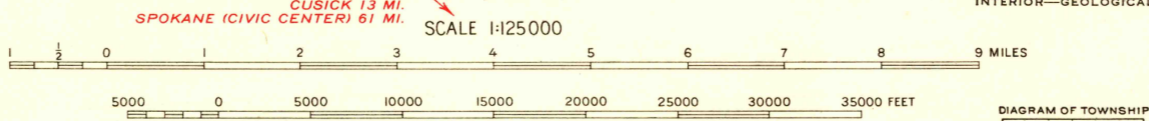


UNITED STATES  
DEPARTMENT OF THE INTERIOR  
GEOLOGICAL SURVEY

WASHINGTON-IDAHO  
METALINE QUADRANGLE



Topography by J.P. Harrison, E.S. Rickard, F.H. Purdy, J.A. Swart, and International Boundary Commission Surveyed in 1931-1932 and 1934. Unsurveyed roads in red.



ROAD CLASSIFICATION  
 Heavy-duty — Light-duty  
 Medium-duty — Unimproved dirt  
 State Route

APPROXIMATE MEAN DECLINATION, 1934

CONTOUR INTERVAL 100 FEET  
 DATUM IS MEAN SEA LEVEL

FOR SALE BY U. S. GEOLOGICAL SURVEY, DENVER 25, COLORADO OR WASHINGTON 25, D. C.  
 A FOLDER DESCRIBING TOPOGRAPHIC MAPS AND SYMBOLS IS AVAILABLE ON REQUEST

INTERIOR—GEOLOGICAL SURVEY, WASHINGTON, D. C.—1939  
 Polyconic projection. 1927 North American datum  
 20,000-foot grids based on Idaho (West) and  
 Washington (North) rectangular coordinate systems  
 To join Colville map use  
 dotted projection corners

METALINE, WASH.—IDAHO  
 N 4830—W 11700/30  
 1934

USGS  
FILE COPY  
TOPOGRAPHIC DIVISION

NOV -4 1939

2495