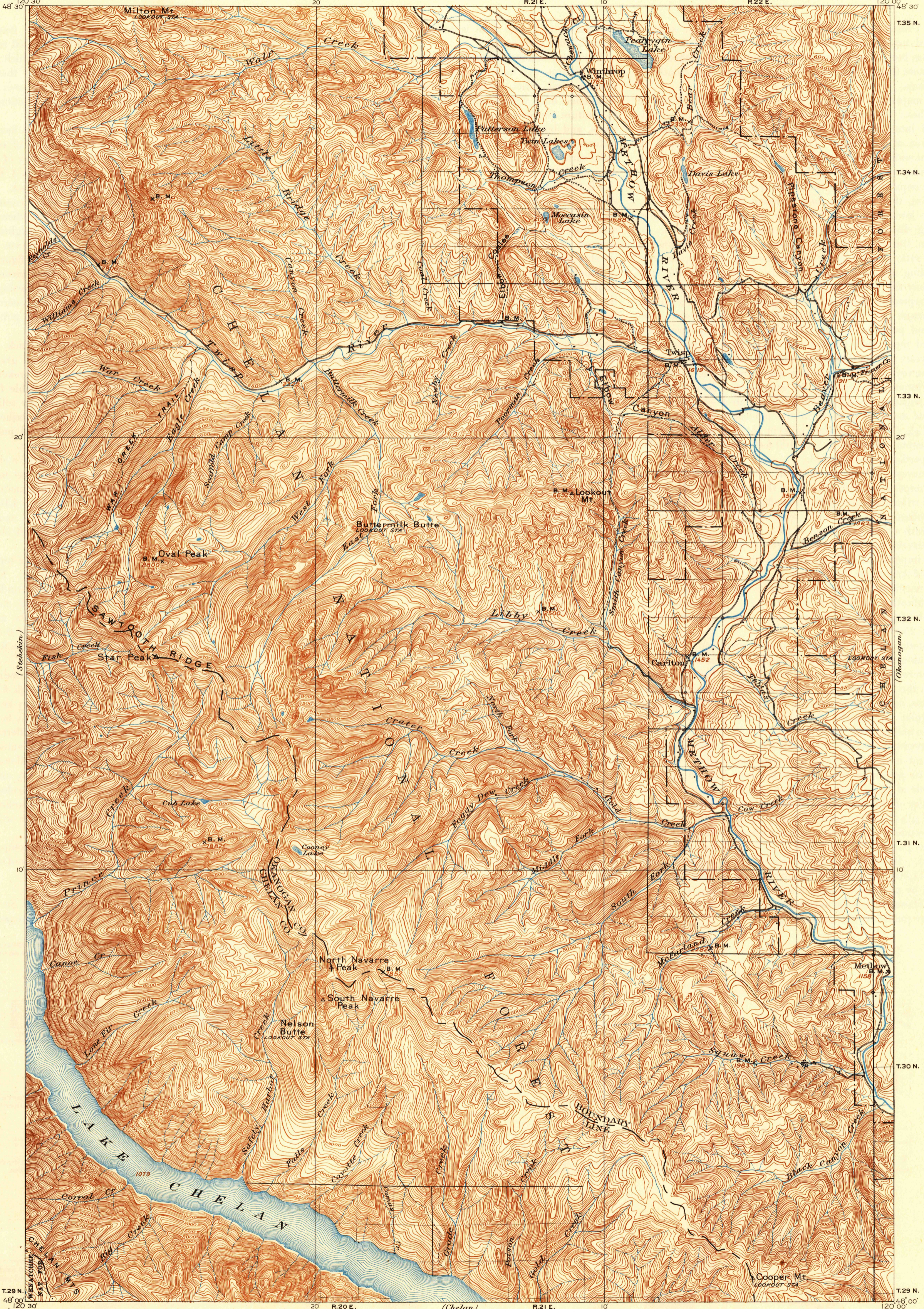


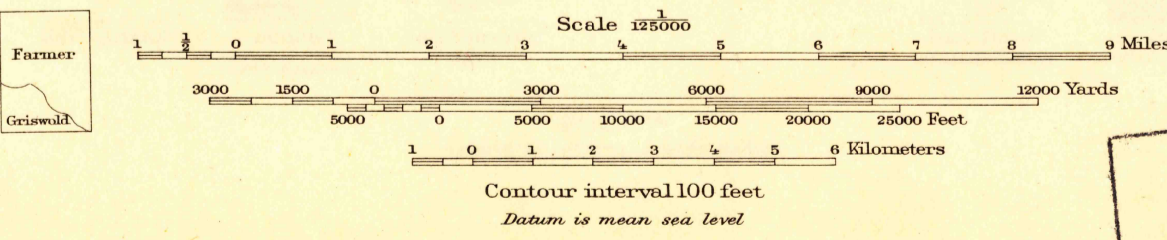
U.S.G.S.
FILE COPY
Inspection and Editing.

UNITED STATES
DEPARTMENT OF THE INTERIOR
GEOLOGICAL SURVEY

WASHINGTON
METHOW QUADRANGLE



(Chiwaukum)
R.U. Goode, Geographer in charge.
Triangulation by A.H. Sylvester.
Topography by W.T. Griswold and R.A. Farmer.
Surveyed in 1897 and 1899.



Edition of Mar. 1901, reprinted 1947
Polyconic projection.

USGS
Historical File
Topographic Division

METHOW, WASH.
N 4800-W 12000/30

U.S.G.S.
FILE COPY
Inspection and Editing.

FEB 19 1947

2045