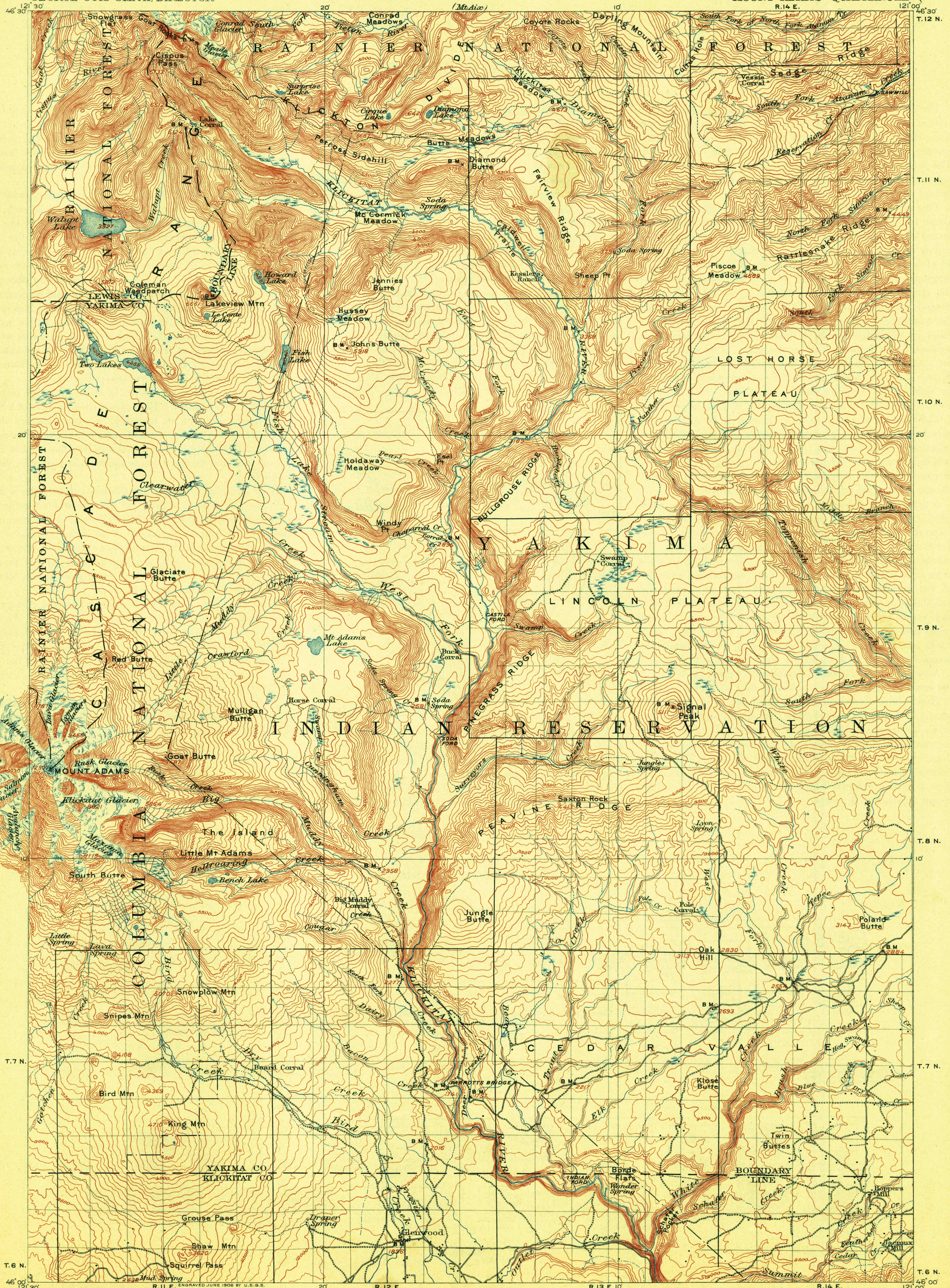


(Ellensburg)



FILE COPY  
U.S. G.S. Topographic Maps

U.S. G.S.  
FILE COPY  
U.S. G.S. Topographic Maps

E. M. Douglas, Geographer in charge.  
Topography and triangulation by A.H. Sylvester.  
Surveyed in 1903-1904.

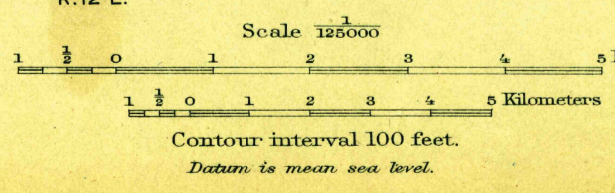


DIAGRAM OF TOWNSHIP

6	5	4	3	2	1
7	8	9	10	11	12
18	17	16	15	14	13
19	20	21	22	23	24
30	29	28	27	26	25
31	32	33	34	35	36

Edition of Mar. 1907, reprinted June 1913.  
JUN 30 1913  
JUN 30 1913 2588

USGS  
Historical File  
Topographic Division  
MOUNT ADAMS