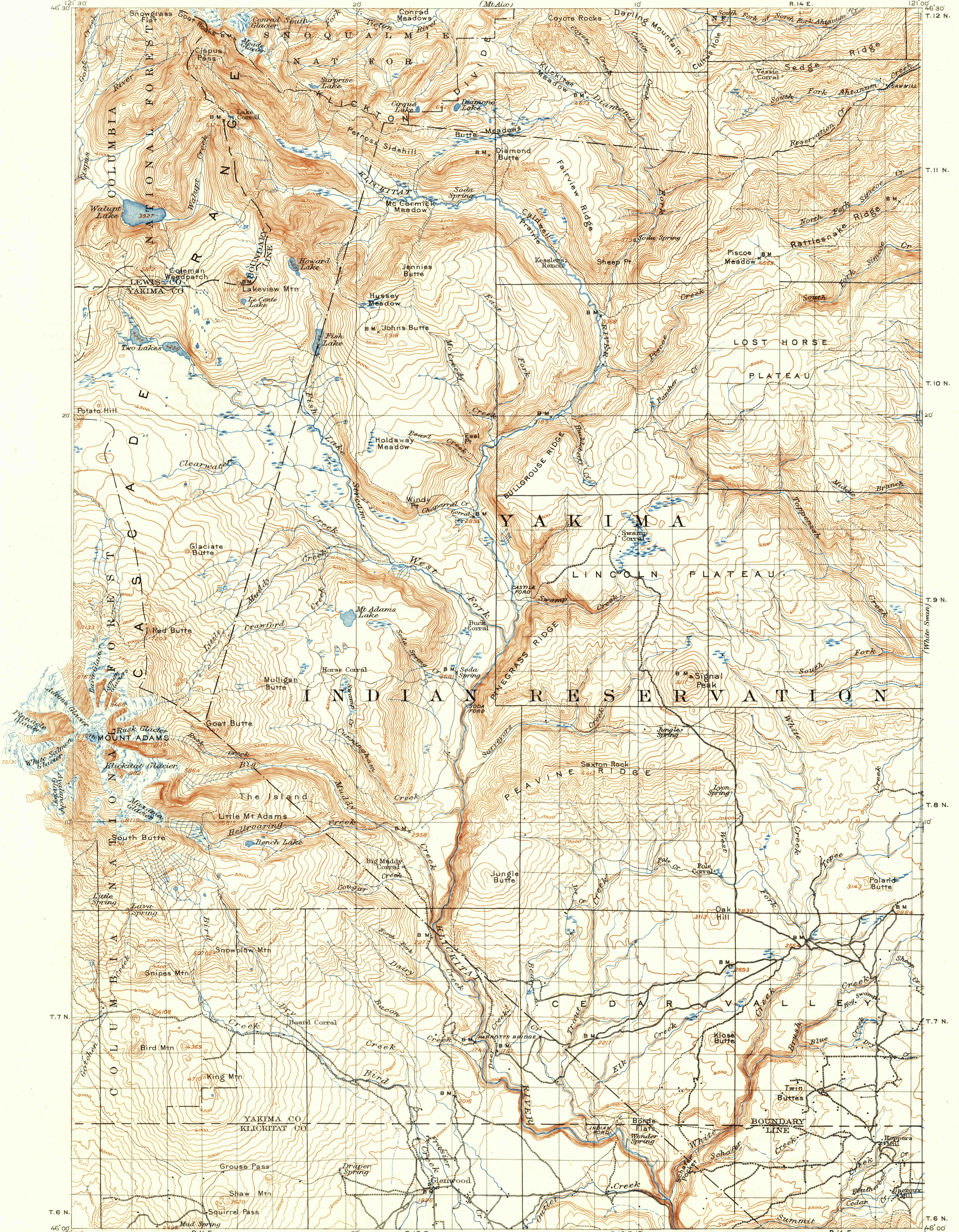
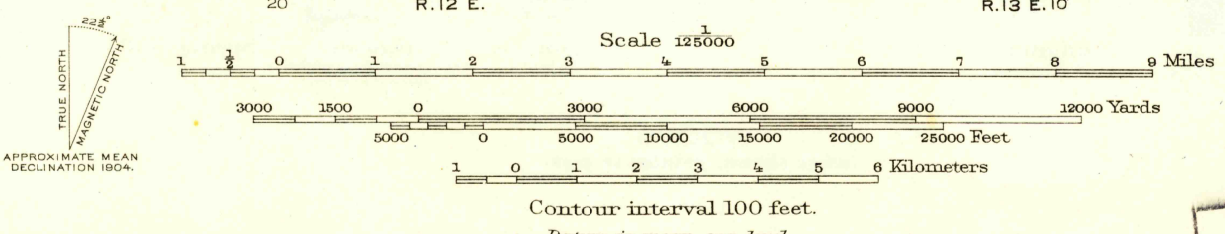


FILE COPY  
Topography and Editing



E. M. Douglas, Geographer in charge.  
Topography and triangulation by A. H. Sylvester.  
Surveyed in 1903-1904.



Polyconic projection.  
To join White Swan map use dotted projection corners.

U. S. G. S.  
FILE COPY  
Topography and Editing

MOUNT ADAMS, WASH.  
Edition of 1907  
reprinted 1947.  
N4600-W12100/30

JUL 10 1947

USGS  
Historical File  
Topographic Division

3185