

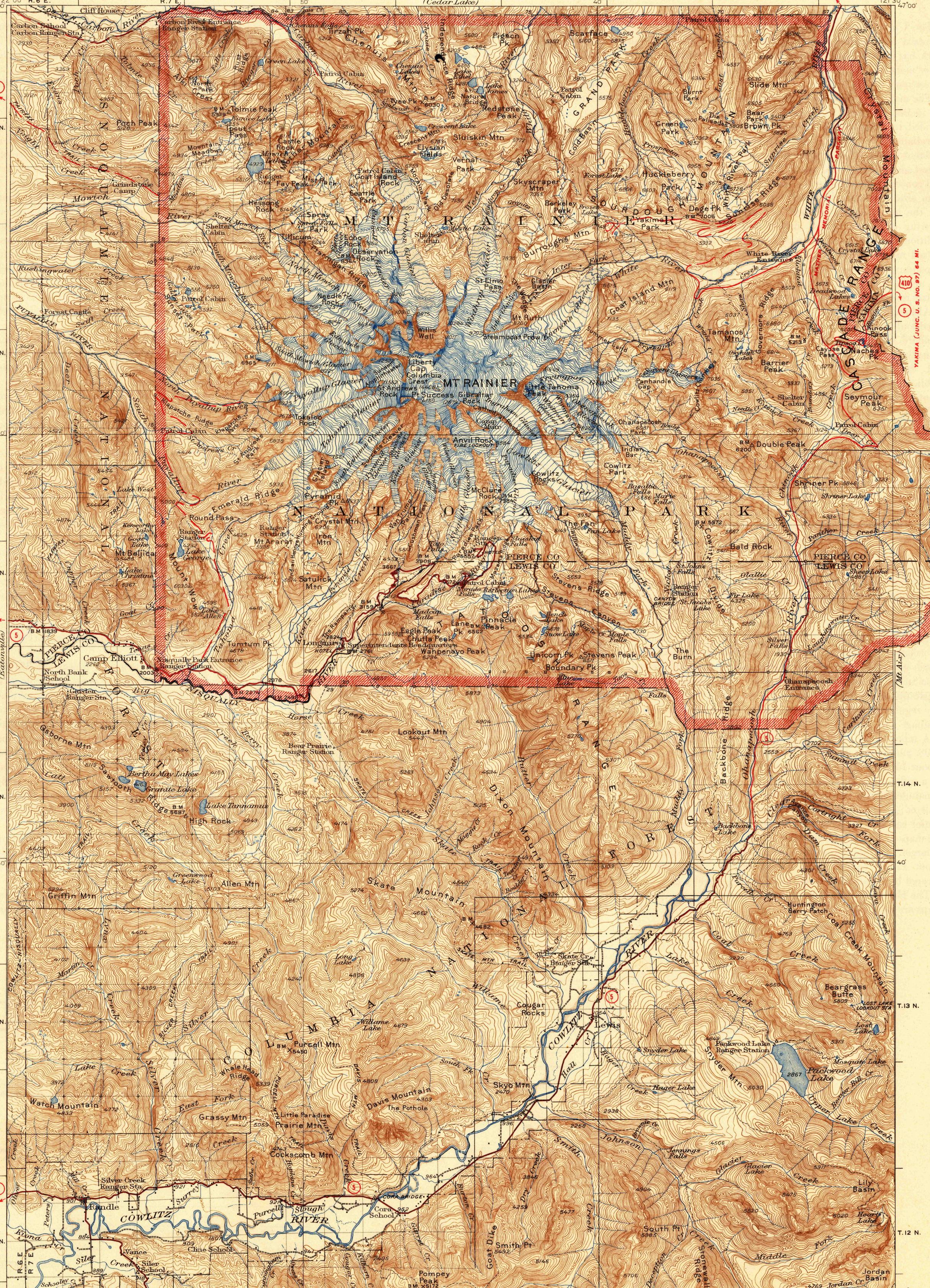
U. S. G. S.  
FILE COPY  
Inspection and Editing.

UNITED STATES  
DEPARTMENT OF THE INTERIOR  
GEOLOGICAL SURVEY

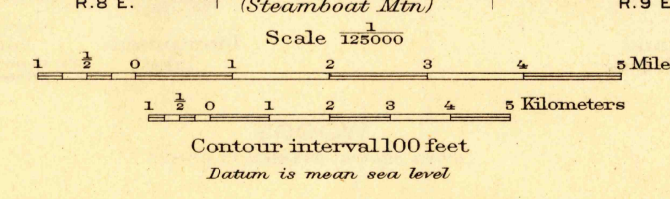
AUBURN 47 MI.  
WANUKLAU 31.5 MI.  
WASHINGTON  
MT. RAINIER QUADRANGLE

BUCKLEY 14 MI.  
FAIRFAX 1.3 MI.  
BUCKLEY 17 MI.  
TACOMA (CIVIC CENTER) 40 MI.  
MARYS CORNER (JUNC. U. S. NO. 89) 51 MI.  
ELBE 9.5 MI.  
ASHFORD 1.7 MI.  
MARYS CORNER (JUNC. U. S. NO. 89) 46 MI.  
KOBOM 11 MI.

YAKIMA (JUNC. U. S. NO. 87) 84 MI.



Topography by C.P. McKinley and W.R. Chenoweth  
Control in part by U.S. Coast and Geodetic Survey  
Surveyed in 1924.  
Park area reduced from map of  
Mt. Rainier National Park



Polyconic projection, North American datum  
5000 yard grid based upon U.S. zone system, G

ROUTES USUALLY TRAVELED  
HARD IMPERVIOUS SURFACES  
OTHER SURFACE IMPROVEMENTS  
U. S. ROUTE 1944 STATE ROUTE

MT. RAINIER, WASH.  
Edition of 1928  
reprinted 1939

U. S. G. S.  
FILE COPY  
Inspection and Editing.

AUG 4 - 1944

USGS  
Historical File  
Topographic Division