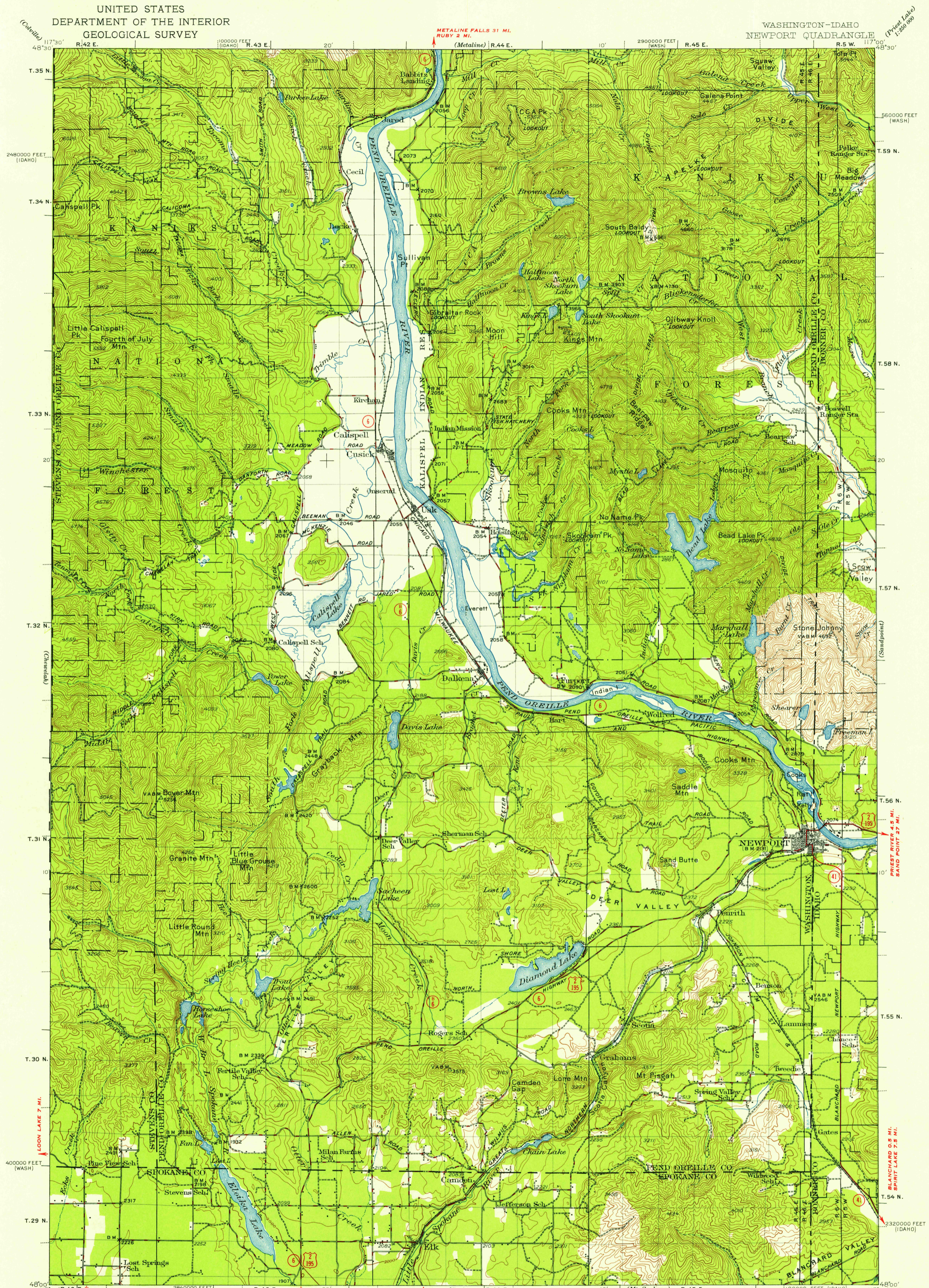


UNITED STATES  
DEPARTMENT OF THE INTERIOR  
GEOLOGICAL SURVEY

WASHINGTON-IDAHO  
NEWPORT QUADRANGLE



U.S.G.S.  
FILE COPY  
TOPOGRAPHIC DIVISION

U.S.G.S.  
FILE COPY  
TOPOGRAPHIC DIVISION

Topography by R.G. Stevenson, A. Fankhauser and S.C. Kain  
Surveyed in 1930, 1935 and 1936

DEER PARK 3 MI. SPOKANE (CIVIC CENTER) 25 MI.

CHATTAROY 7.8 MI. MILAN 3.8 MI. (Spokane) (Mt. Spokane) 1:62 500

SCALE 1:62 500

INTERIOR—GEOLOGICAL SURVEY, WASHINGTON, D. C.—1938

Polyconic projection. 1927 North American datum  
20,000-foot grids based on Washington (North) and  
Idaho (West) rectangular coordinate systems

ROAD CLASSIFICATION  
 HARD-SURFACE ALL WEATHER ROADS DRY WEATHER ROADS  
 Heavy-duty 4 LANE LANE Improved dirt  
 Medium-duty 4 LANE LANE Unimproved dirt  
 Loose-surface, graded, or narrow hard-surface  
 U. S. Route State Route

CONTOUR INTERVAL 100 FEET  
DATUM IS MEAN SEA LEVEL

APPROXIMATE MEAN DECLINATION, 1936

FOR SALE BY U. S. GEOLOGICAL SURVEY, DENVER 2, COLORADO OR WASHINGTON 25, D. C.  
A FOLDER DESCRIBING TOPOGRAPHIC MAPS AND SYMBOLS IS AVAILABLE ON REQUEST

NEWPORT, WASH-IDAHO  
N 4800—W 11700 / 30  
1936  
U.S.G.S. Historical File Topographic Division

DEC 20 1957

2935