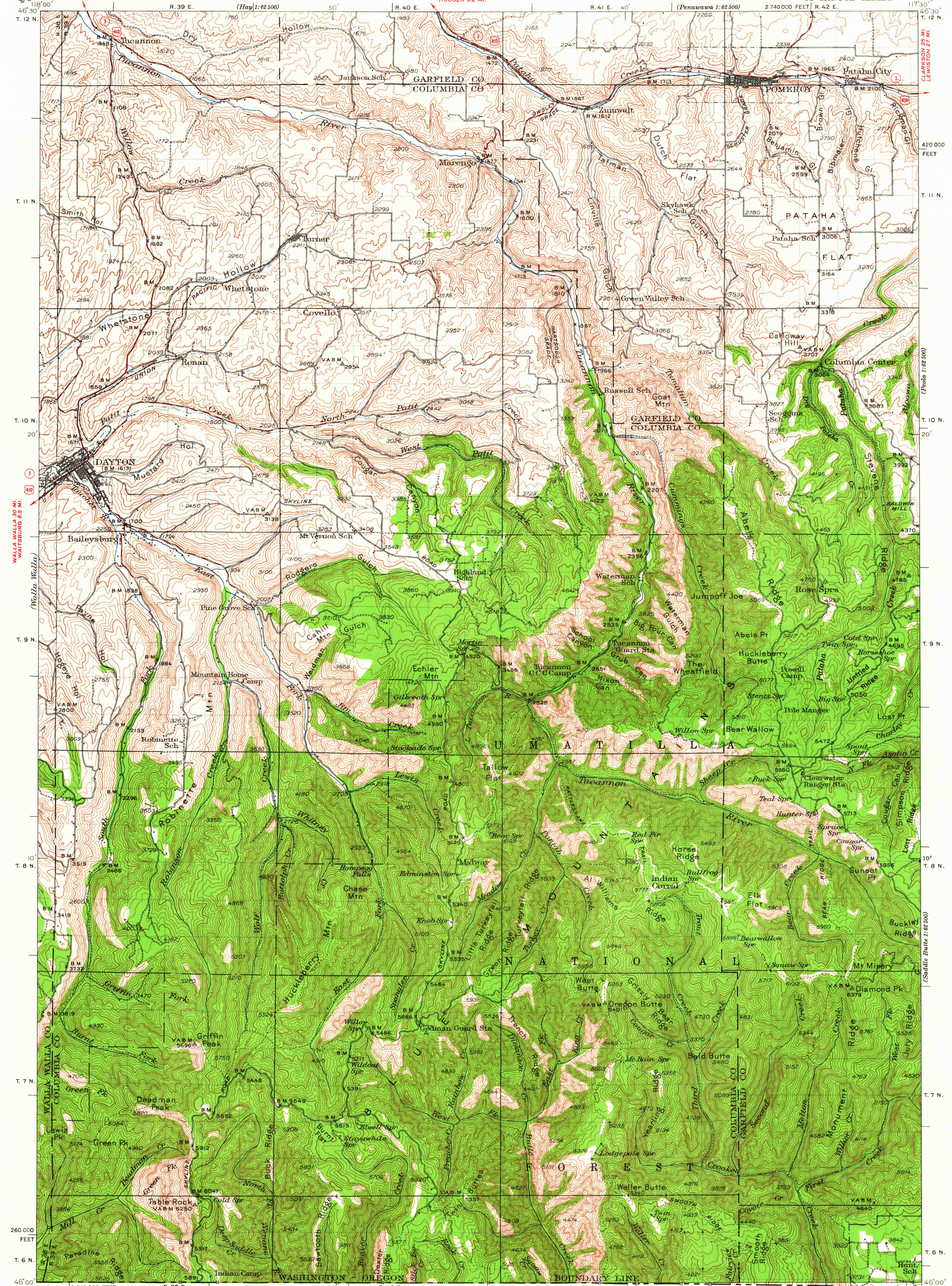


DODGE (JUNC. U.S. 295) 10 MI.
DELANEY 0.7 MI.

UNITED STATES

DEPARTMENT OF THE INTERIOR
GEOLOGICAL SURVEY

WASHINGTON
POMEROY QUADRANGLE
30-MINUTE SERIES



Topography by W.R.Chenoweth, Lee Morrison,
V.S.Seward, and D.H.Rutledge
Surveyed in 1936-1937

ROAD CLASSIFICATION
Heavy-duty ————
Medium-duty ————
Light-duty ————
Unimproved dirt - - - - -
U.S. Route (red circle)
State Route (black circle)

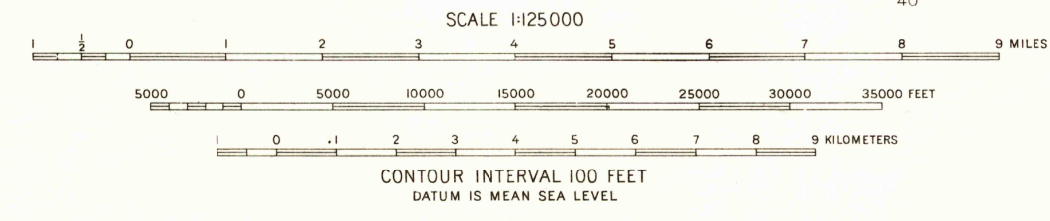
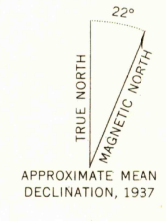


DIAGRAM OF TOWNSHIP

6	5	4	3	2	1
7	8	9	10	11	12
18	17	16	15	14	13
19	20	21	22	23	24
30	29	28	27	26	25
31	32	33	34	35	36

INTERIOR-GEOLOGICAL SURVEY, R. 42 E.
WASHINGTON, D. C. 1964

Polyconic projection. 1927 North American datum
20,000-foot grid based on Washington (South)
rectangular coordinate system

POMEROY, WASH.
N 4600-W 11730/30

1937

U.S.G.S.

OCT 2 1964

3590

FOR SALE BY U. S. GEOLOGICAL SURVEY, DENVER 25, COLORADO OR WASHINGTON 25, D. C.
A FOLDER DESCRIBING TOPOGRAPHIC MAPS AND SYMBOLS IS AVAILABLE ON REQUEST

USGS
Historical File
Geographic Division
TOPOGRAPHIC DIVISION