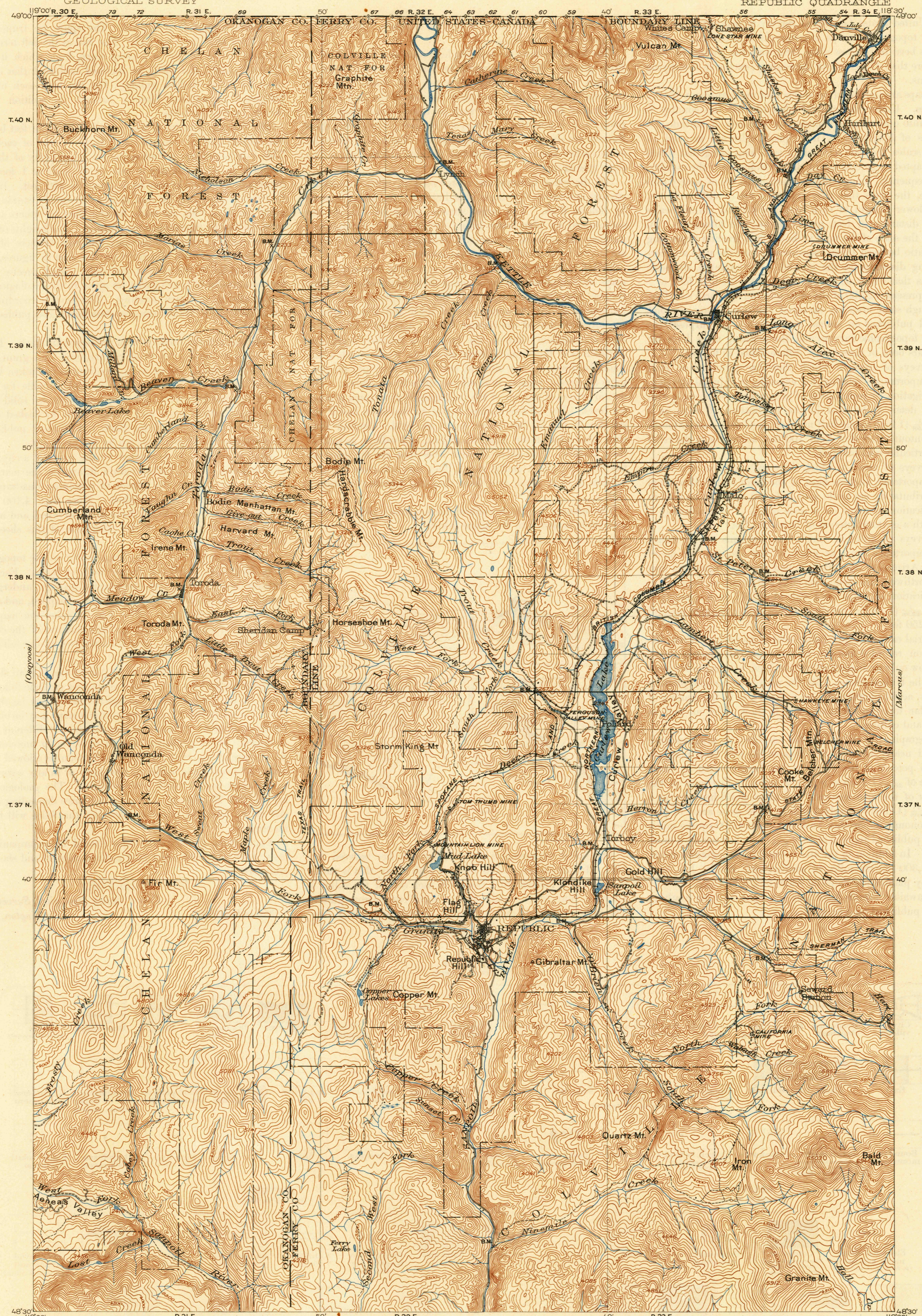


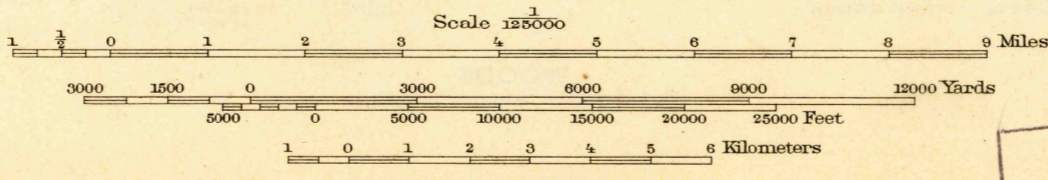
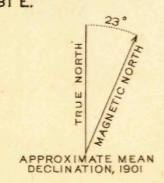
U. S. G. S.
FILE COPY
Inspection and Editing.

UNITED STATES
DEPARTMENT OF THE INTERIOR
GEOLOGICAL SURVEY

WASHINGTON
REPUBLIC QUADRANGLE



R. H. Goode, Geographer in charge.
Triangulation by C. F. Urquhart.
Topography by L. C. Fletcher.
Surveyed in 1901.



Contour interval 100 feet.
Datum is mean sea level.

Edition of 1904, reprinted 1944.
Polyconic projection.

U. S. G. S. USGS
FILE COPY
Inspection and Editing.

WASH. REPUBLIC
N 4830-W 11830/30

SEP 18 1944