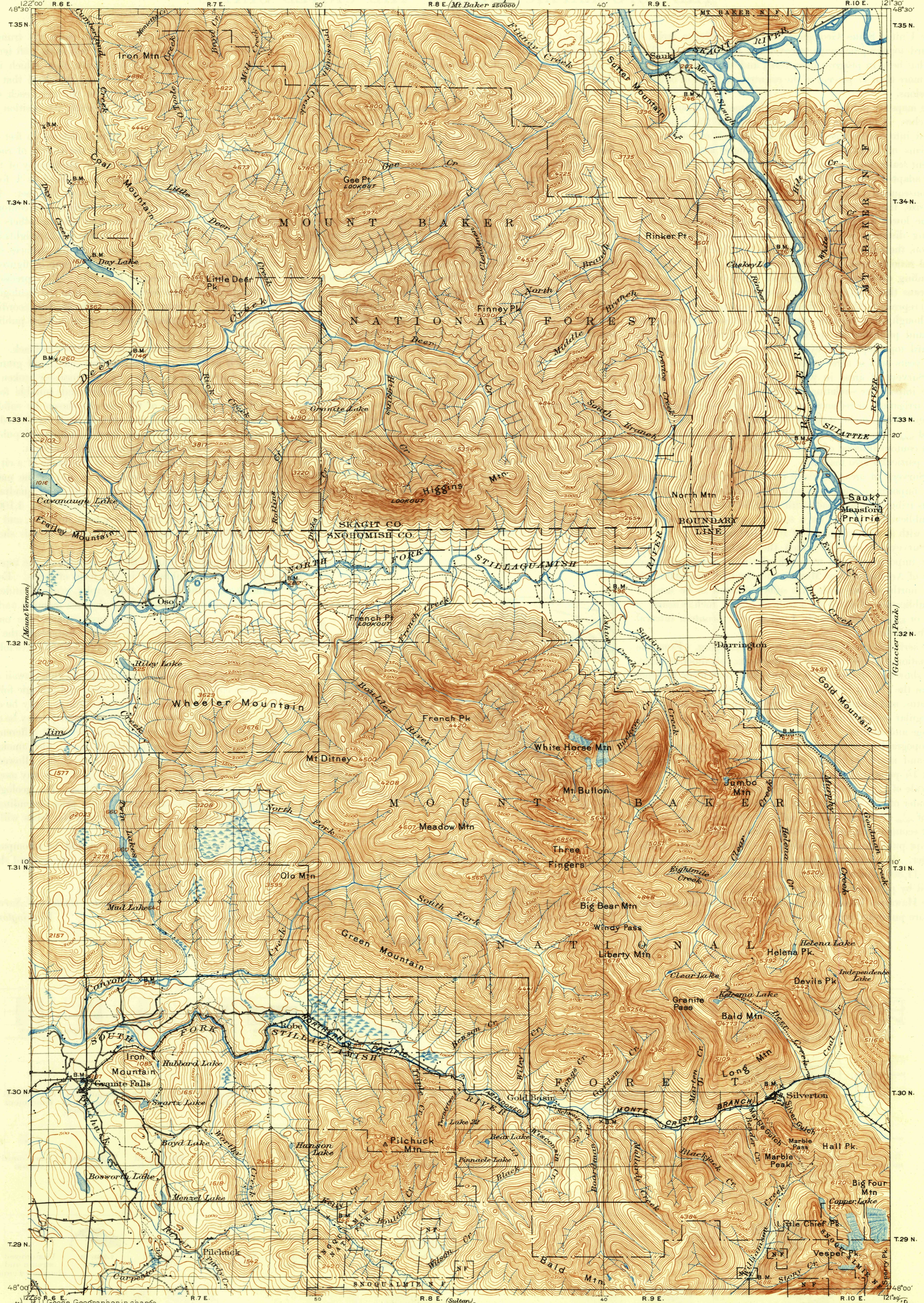


U.S.G.S.  
FILE COPY  
Inspection and Editing.

UNITED STATES  
DEPARTMENT OF THE INTERIOR  
GEOLOGICAL SURVEY

WASHINGTON  
STILLAGUAMISH QUADRANGLE

(Wachusett)  
62-200



(Shoshone)  
122° 00' R. 6 E. Geographer in charge  
R. U. Goode, Geographer in charge  
Triangulation by A. H. Sylvester  
Topography by L. C. Fletcher  
Surveyed in 1897-99.

Scale 1:50,000  
0 1 2 3 4 5 6 7 8 9 Miles  
0 3000 6000 9000 12000 Yards  
0 5000 10000 15000 20000 25000 Feet  
0 1 2 3 4 5 6 Kilometers  
Contour interval 100 feet  
Datum is mean sea level

Edition of May 1901, reprinted 1946  
with corrections. Polyconic projection  
To join Mt. Vernon and Sultan maps  
use dotted projection corners

STILLAGUAMISH WASH.  
N4800-W12130/30

U.S.G.S.  
FILE COPY  
Inspection and Editing.

USGS  
Historical File  
Topographic Division

JUN 11 1946

2945