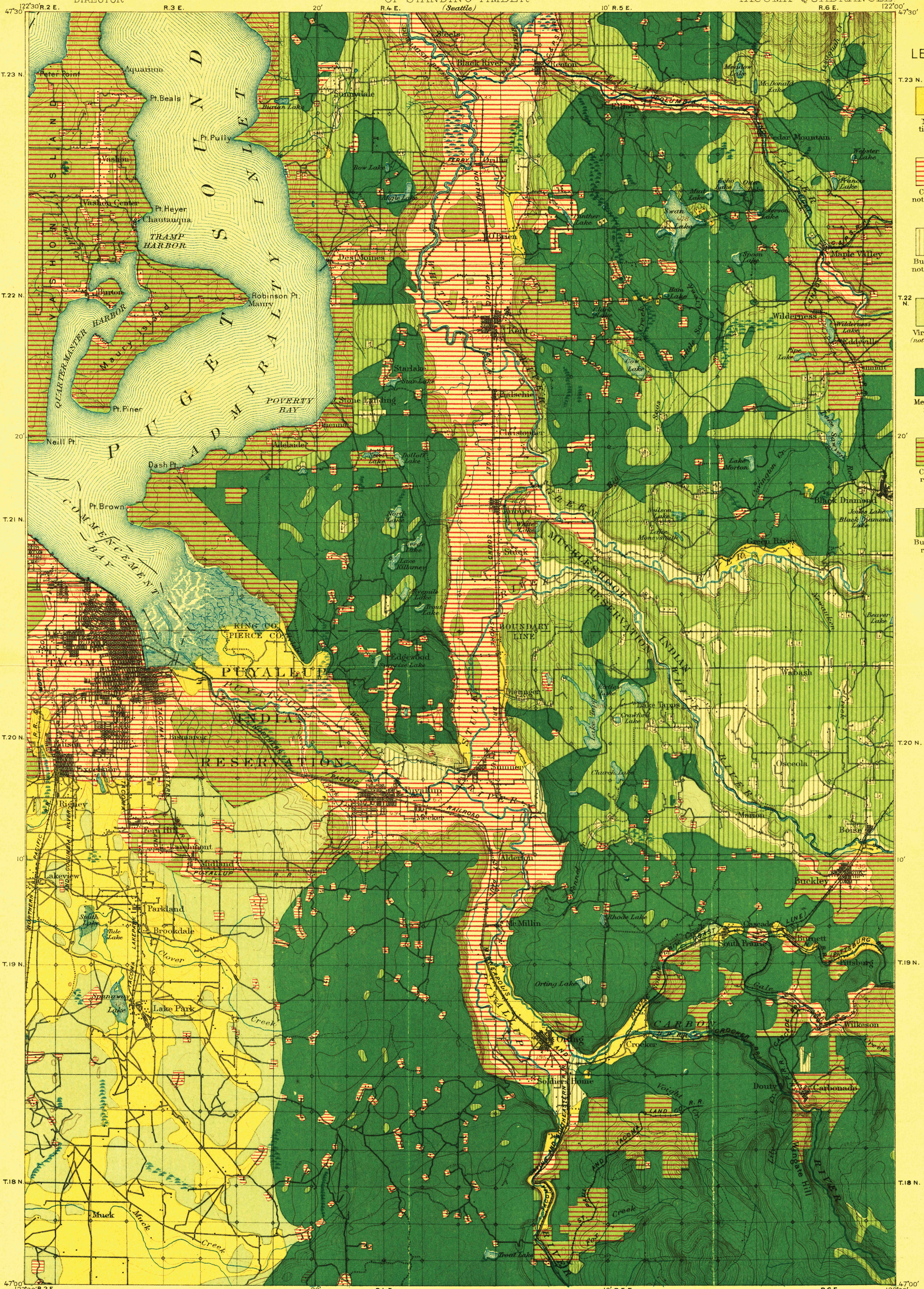


PLATE CXXIX
TWENTY-FIRST ANNUAL REPORT PART V
LAND CLASSIFICATION AND DENSITY
OF STANDING TIMBER
(Seattle)

WASHINGTON
TACOMA QUADRANGLE

U.S. GEOLOGICAL SURVEY
CHARLES D. WALCOTT,
DIRECTOR



LEGEND

- Naturally timberless
- Cut areas not restocking
- Burned areas not restocking
- Virgin timber (not merchantable)
- Merchantable forests
- Cut areas restocking
- Burned areas restocking

RETURN TO:
USGS AND HISTORICAL MAP ARCHIVES

Henry Gannett, Chief Topographer.
R. U. Goode, Geographer in charge.
Control by W. T. Griswold and U.S. Coast and Geodetic Survey.
Topography by G. E. Hyde and R. H. McKee.
Surveyed in 1894-95.



Scale 1:125,000
Contour interval 50 feet

Henry Gannett, Geographer in charge
Land classification by J. W. Rankine
and G. H. Plummer
Surveyed in 1897

Takoma