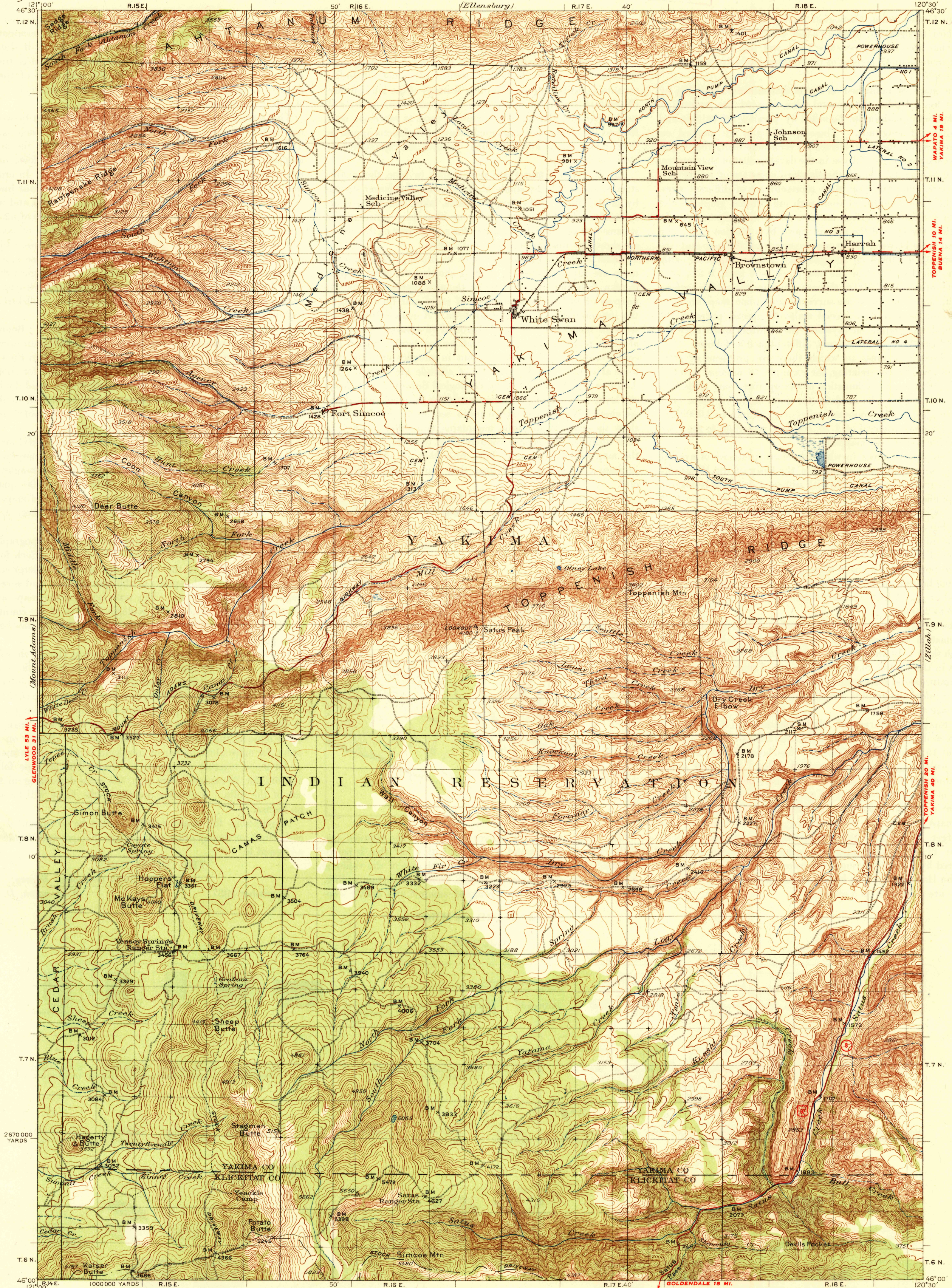
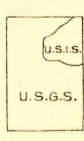


UNITED STATES  
DEPARTMENT OF THE INTERIOR  
GEOLOGICAL SURVEY

WASHINGTON  
WHITE SWAN QUADRANGLE



Topography by E.P. Davis, A. Fankhauser, F.H. Purdy,  
G.A. Fischer, J.C. Jennings, W.F. Norton, F.V. Schneider,  
and U.S. Indian Service  
Control by U.S. Geological Survey, U.S. Coast and Geodetic Survey,  
and Pacific Power & Light Company  
Surveyed in 1934



Scale 1:25000  
Miles  
Kilometers  
Contour interval 50 feet  
Datum is mean sea level

USGS  
Historical File  
Topographic Division

HARD IMPERVIOUSLY SURFACED ROADS  
OTHER MAIN TRAVELED ROADS  
1936

Polyconic projection, 1927 North American datum  
5000 yard grid based upon U.S. zone system, G

WHITE SWAN, WASH.  
Edition of 1937  
1648:60; 61;

DEC 31 1937

U.S.G.S.  
FILE COPY  
Inspection and Editing