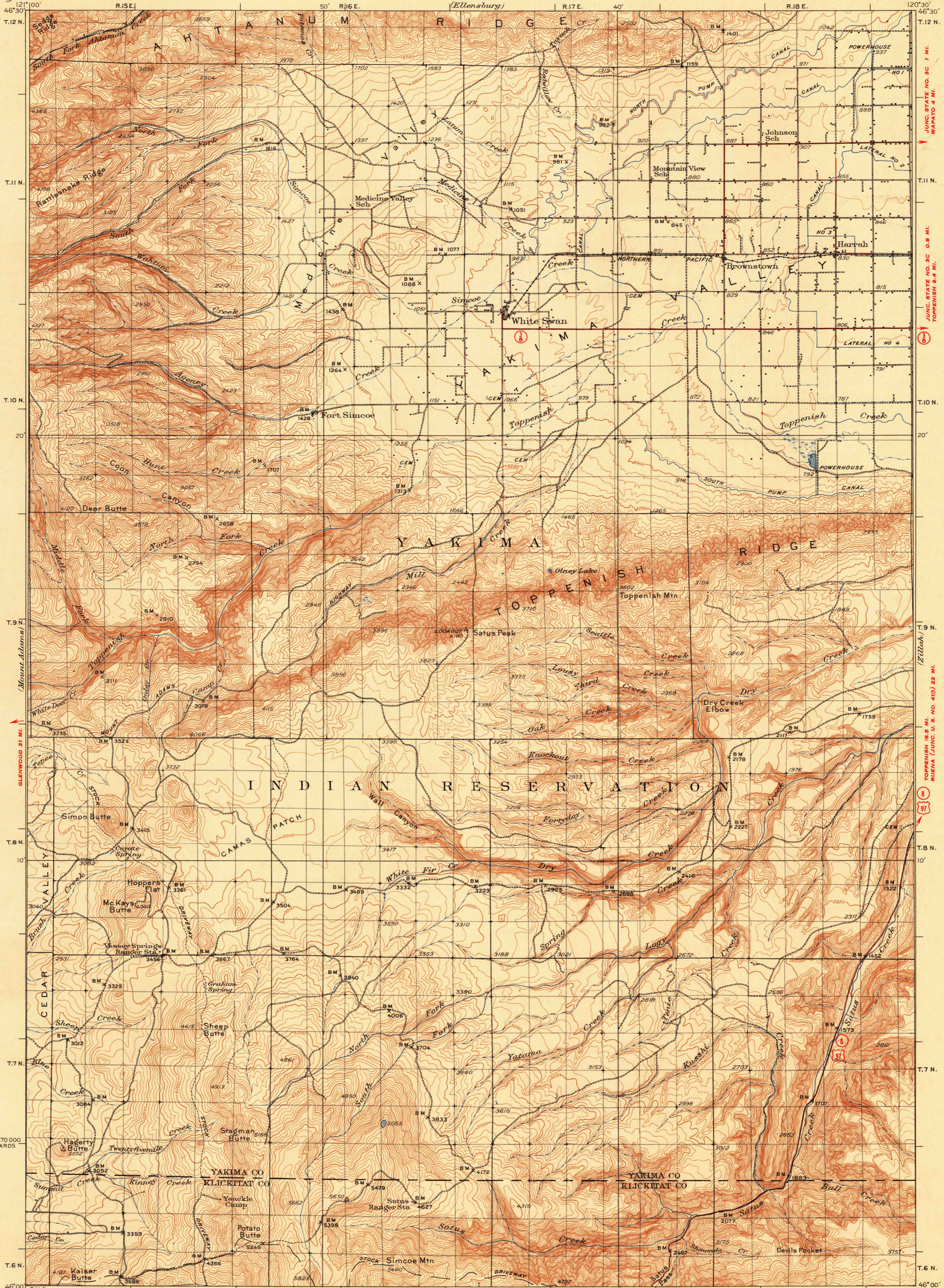


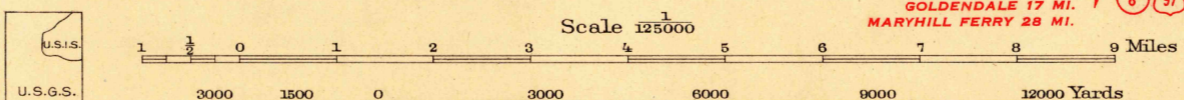
U. S. G. S.
FILE COPY
Inspection and Filing.

UNITED STATES
DEPARTMENT OF THE INTERIOR
GEOLOGICAL SURVEY

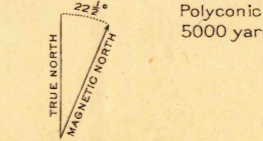
WASHINGTON
WHITE SWAN QUADRANGLE



Topography by E. P. Davis, A. Fankhauser, F. H. Purdy,
G. A. Fischer, J. C. Jennings, W. F. Norton, F. V. Schneider,
and U. S. Indian Service
Surveyed in 1934.



ROAD CLASSIFICATION
1947
Dependable hard surface
heavy-duty road
Secondary hard surface
all weather road
Dry weather roads
Loose surface graded
Unsurfaced, graded
Dirt road
U. S. Route 15
State Route 28



WHITE SWAN, WASH.
Edition of 1937
reprinted 1947
N4600-W12030/30

U.S.G.S.
FILE COPY
Inspection and Filing.

USGS
Historical File
Topographic Division

JAN 14 1948

3220