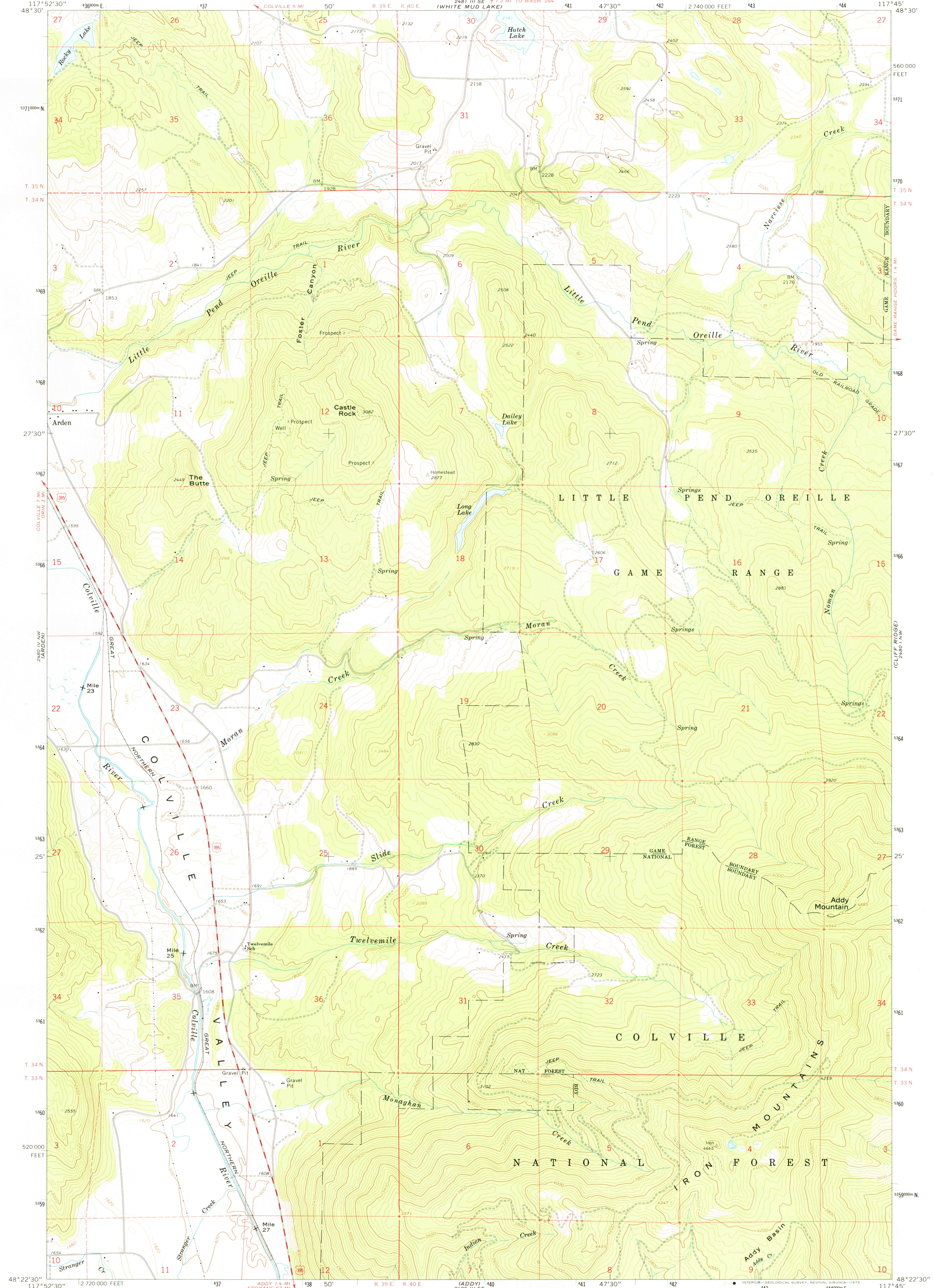


2480 IV SW  
COLVILLE

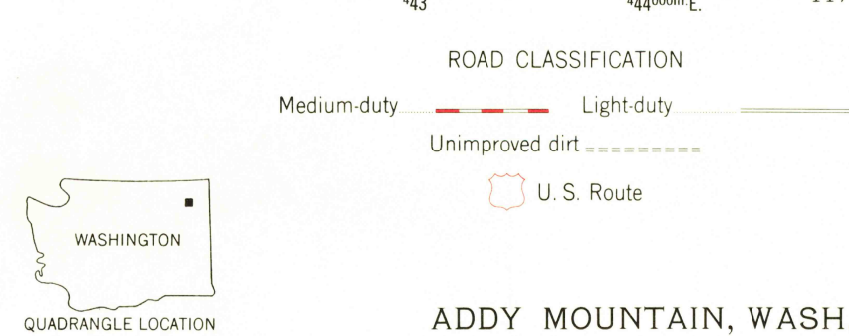
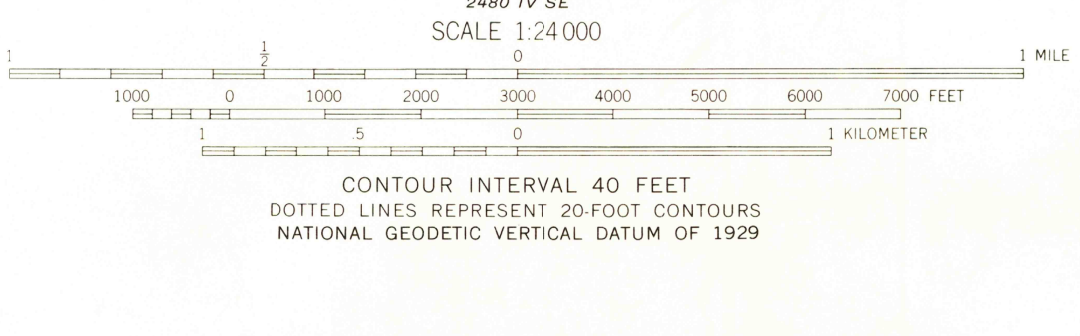
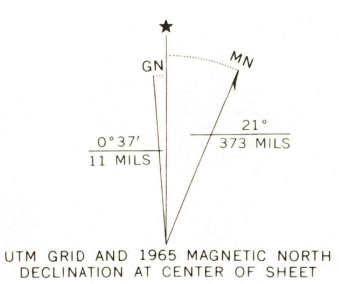
UNITED STATES  
DEPARTMENT OF THE INTERIOR  
GEOLOGICAL SURVEY

ADDY MOUNTAIN QUADRANGLE  
WASHINGTON—STEVENS CO.  
7.5 MINUTE SERIES (TOPOGRAPHIC)

2480 I SE  
PARK RAPIDS



Mapped, edited, and published by the Geological Survey  
Control by USGS and USC&GS  
Topography by photogrammetric methods from aerial  
photographs taken 1962. Field checked 1965  
Polyconic projection. 1927 North American datum  
10,000-foot grid based on Washington coordinate system,  
north zone  
1000-meter Universal Transverse Mercator grid ticks,  
zone 11, shown in blue  
Fine red dashed lines indicate selected fence lines



ADDY MOUNTAIN, WASH.  
N4822 5—W11745 7.5

USGS  
Historical File  
Topographic Division

1965  
AMS 2480 IV NE—SERIES V891

APR 17 1975

3655