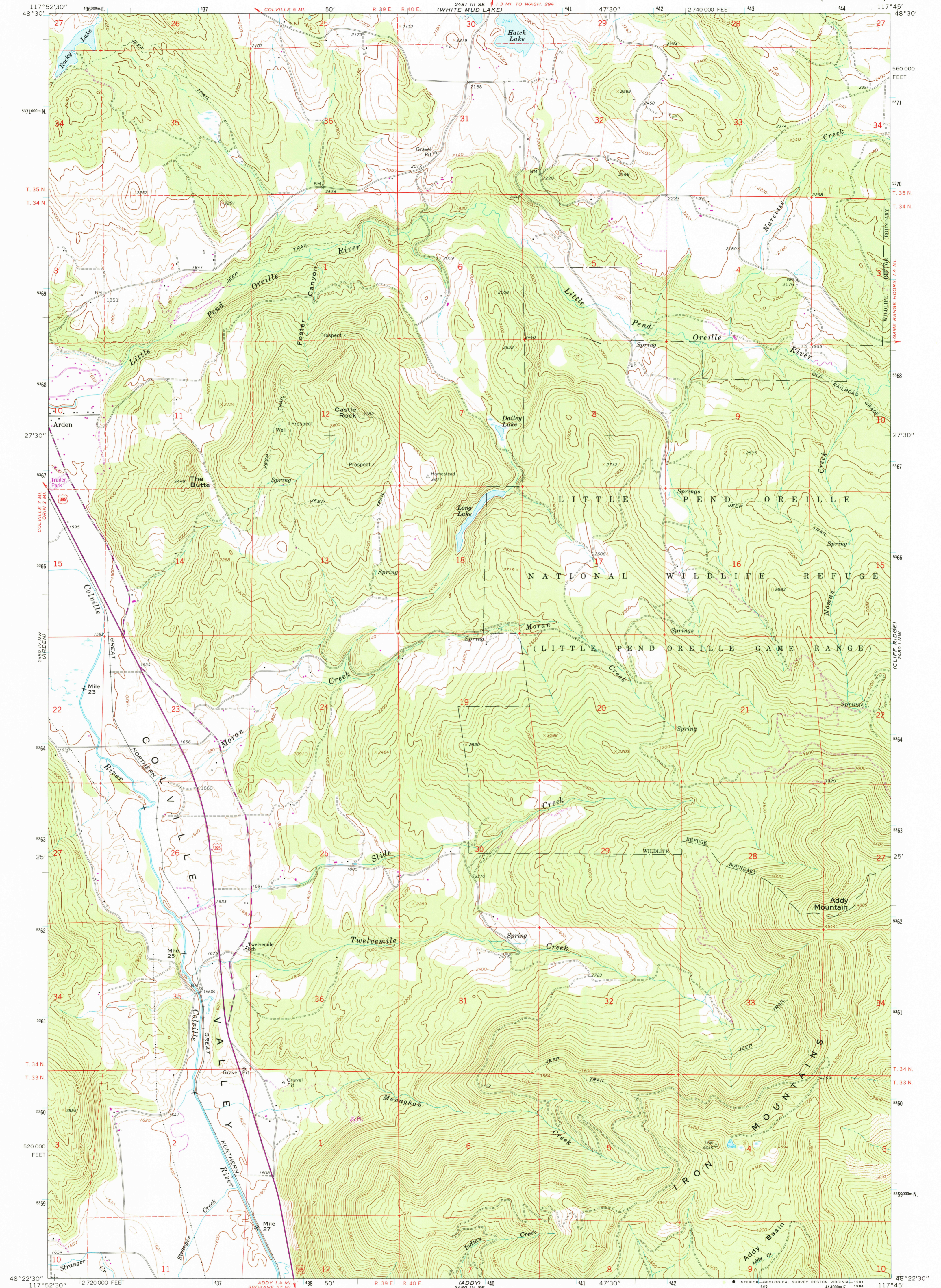


2480 III SE  
(COLVILLE)

UNITED STATES  
DEPARTMENT OF THE INTERIOR  
GEOLOGICAL SURVEY

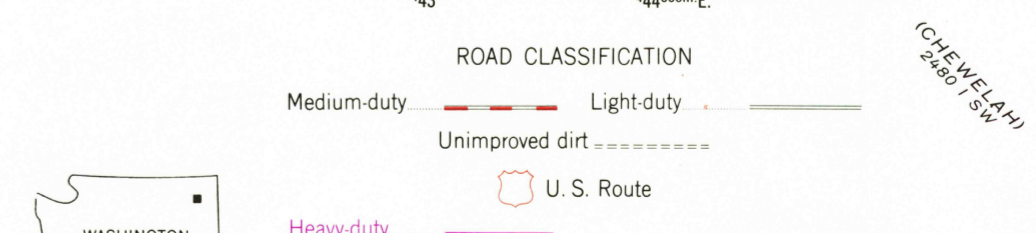
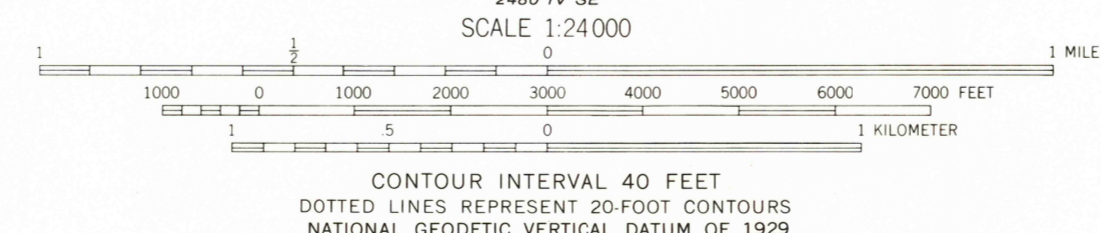
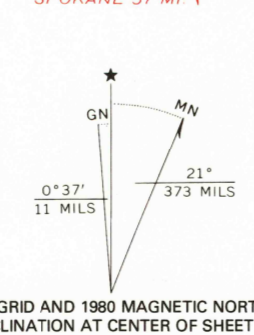
ADDY MOUNTAIN QUADRANGLE  
WASHINGTON—STEVENS CO.  
7.5 MINUTE SERIES (TOPOGRAPHIC)

2480 IV SE  
(PARK RAPIDS)



2480 IV NW  
(COLVILLE)

Mapped, edited, and published by the Geological Survey  
Control by USGS and NOS/NOAA  
Topography by photogrammetric methods from aerial  
photographs taken 1962. Field checked 1965  
Polyconic projection. 1927 North American datum  
10,000-foot grid based on Washington coordinate system,  
north zone  
1000-meter Universal Transverse Mercator grid ticks,  
zone 11, shown in blue  
To place on the predicted North American Datum 1983  
move the projection lines 15 meters north and  
80 meters east as shown by dashed corner ticks  
Fine red dashed lines indicate selected fence lines  
There may be private inholdings within the boundaries of  
the National or State reservations shown on this map



ADDY MOUNTAIN, WASH.  
N4822.5—W11745.7/5

THIS MAP COMPLIES WITH NATIONAL MAP ACCURACY STANDARDS  
FOR SALE BY U.S. GEOLOGICAL SURVEY, DENVER, COLORADO 80225, OR RESTON, VIRGINIA 22092  
A FOLDER DESCRIBING TOPOGRAPHIC MAPS AND SYMBOLS IS AVAILABLE ON REQUEST

Revisions shown in purple compiled by the State of  
Washington from aerial photographs taken 1977  
and other source data. This information not field checked  
Map edited 1980  
1965  
PHOTOREVISED 1980  
DMA 2480 IV NE—SERIES V391

RETURN TO :  
USGS AND HISTORICAL MAP ARCHIVES