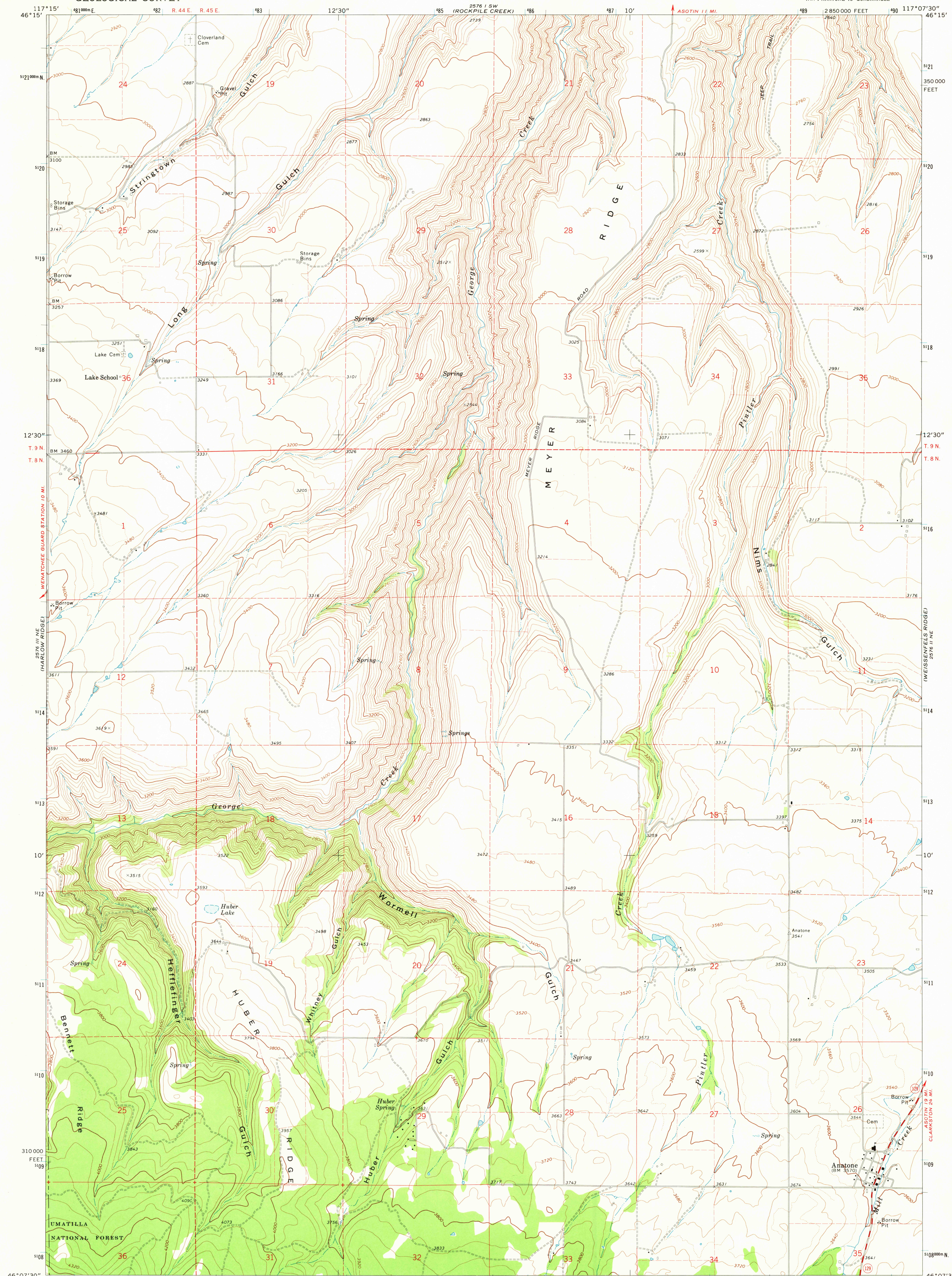
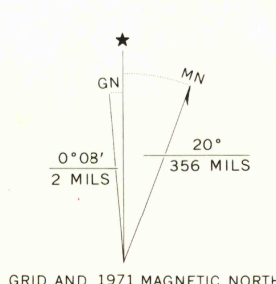


UNITED STATES
DEPARTMENT OF THE INTERIOR
GEOLOGICAL SURVEY

ANATONE QUADRANGLE
WASHINGTON-ASOTIN CO.
7.5 MINUTE SERIES (TOPOGRAPHIC)
NW/4 ANATONE 15' QUADRANGLE



Mapped, edited, and published by the Geological Survey
Control by USGS and USC&GS
Topography by photogrammetric methods from aerial
photographs taken 1970. Field checked 1971
Projection and 10,000-foot grid ticks: Washington coordinate
system, south zone (Lambert conformal conic)
1000-meter Universal Transverse Mercator grid ticks,
zone 11, shown in blue. 1927 North American datum
Fine red dashed lines indicate selected fence lines



SCALE 1:24000
CONTOUR INTERVAL 40 FEET
DOTTED LINES REPRESENT 20-FOOT CONTOURS
DATUM IS MEAN SEA LEVEL



ROAD CLASSIFICATION
Primary highway, hard surface
Secondary highway, hard surface
Unimproved road
Interstate Route
U. S. Route
State Route

USGS
Historical File
Topographic Division
ANATONE, WASH.
NW/4 ANATONE 15' QUADRANGLE
N4607.5-W11707.5/7.5
1971
AMS 2576 II NW-SERIES V891

THIS MAP COMPLIES WITH NATIONAL MAP ACCURACY STANDARDS
FOR SALE BY U. S. GEOLOGICAL SURVEY, DENVER, COLORADO 80225, OR WASHINGTON, D. C. 20242
A FOLDER DESCRIBING TOPOGRAPHIC MAPS AND SYMBOLS IS AVAILABLE ON REQUEST

BLACK BUTTE
2576 II SE
2576 I SE

ASOTIN 12 MI.
CLARKSTON 24 MI.

MAY 16 1974

Dangerous
3000
50 ft