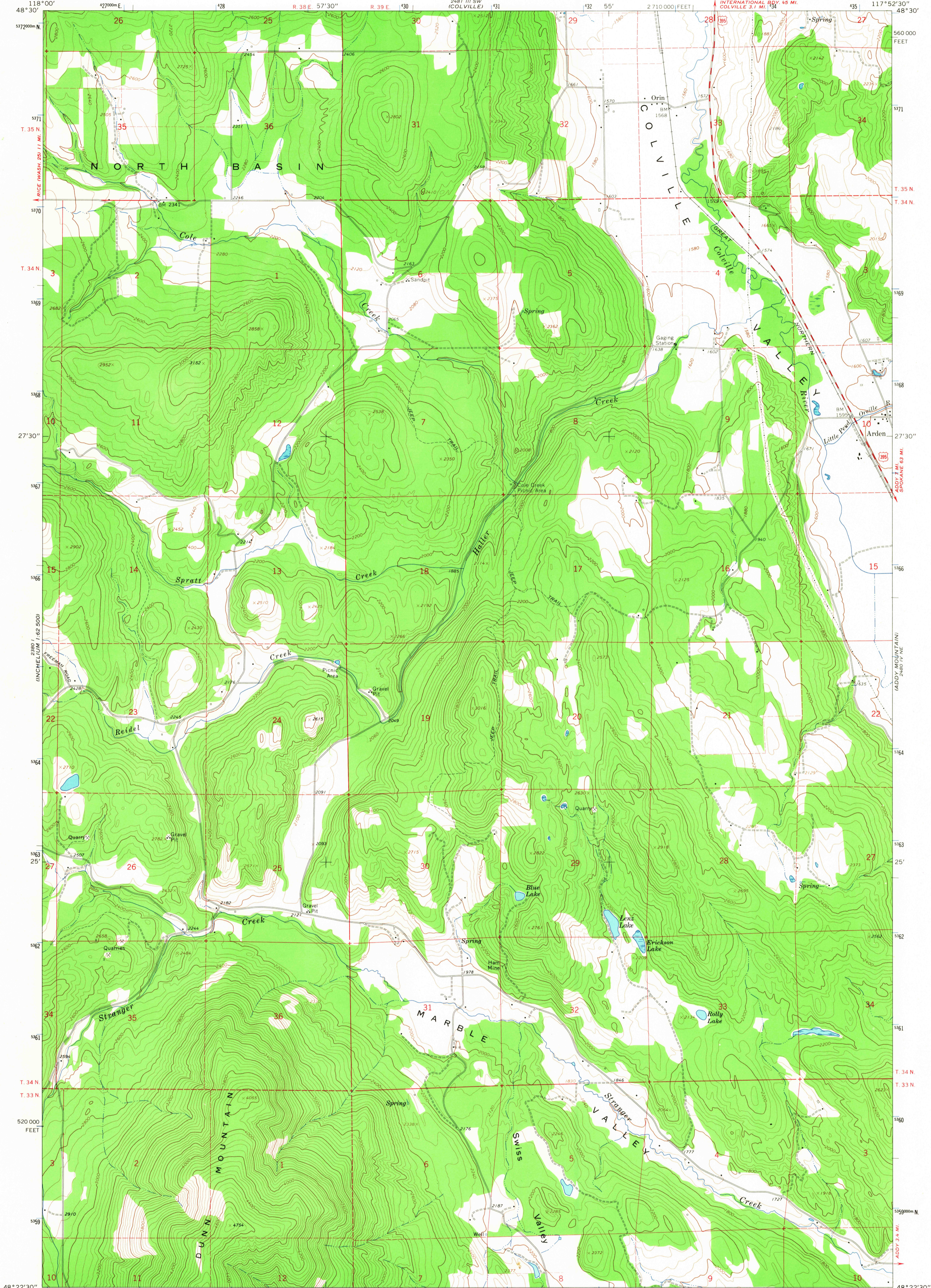
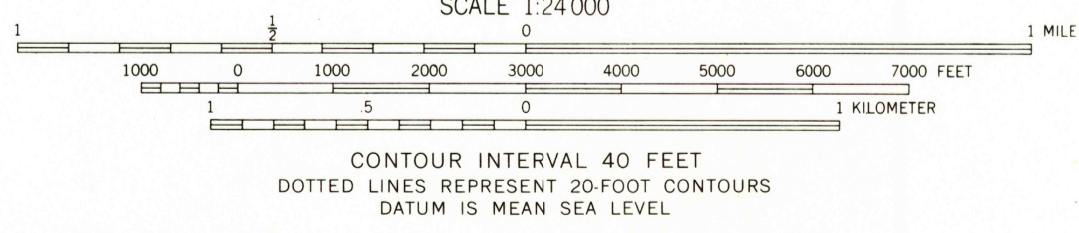
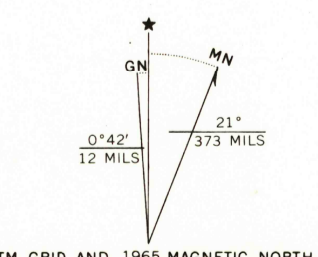


UNITED STATES  
DEPARTMENT OF THE INTERIOR  
GEOLOGICAL SURVEY

ARDEN QUADRANGLE  
WASHINGTON—STEVENS CO.  
7.5 MINUTE SERIES (TOPOGRAPHIC)



2 690 000 FEET  
GIFFORD WASH. 29.16 MI.  
Mapped, edited, and published by the Geological Survey  
Control by USGS and USC&GS  
Topography by photogrammetric methods from aerial  
photographs taken 1962. Field checked 1965  
Polyconic projection. 1927 North American datum  
10,000-foot grid based on Washington coordinate system,  
north zone  
1000-meter Universal Transverse Mercator grid ticks,  
zone 11, shown in blue  
Fine red dashed lines indicate selected fence lines



ROAD CLASSIFICATION  
Medium-duty ——— Light-duty ———  
Unimproved dirt - - - - - U.S. Route

WASHINGTON  
U.S.G.S. TOPOGRAPHIC DIVISION  
ARDEN, WASH.  
N4822.5—W11752.5/7.5  
1965  
AMS 2480 IV NW—SERIES V891

3250  
OCT 6 1967

THIS MAP COMPLIES WITH NATIONAL MAP ACCURACY STANDARDS  
FOR SALE BY U.S. GEOLOGICAL SURVEY, DENVER, COLORADO 80225, OR WASHINGTON, D.C. 20242  
A FOLDER DESCRIBING TOPOGRAPHIC MAPS AND SYMBOLS IS AVAILABLE ON REQUEST