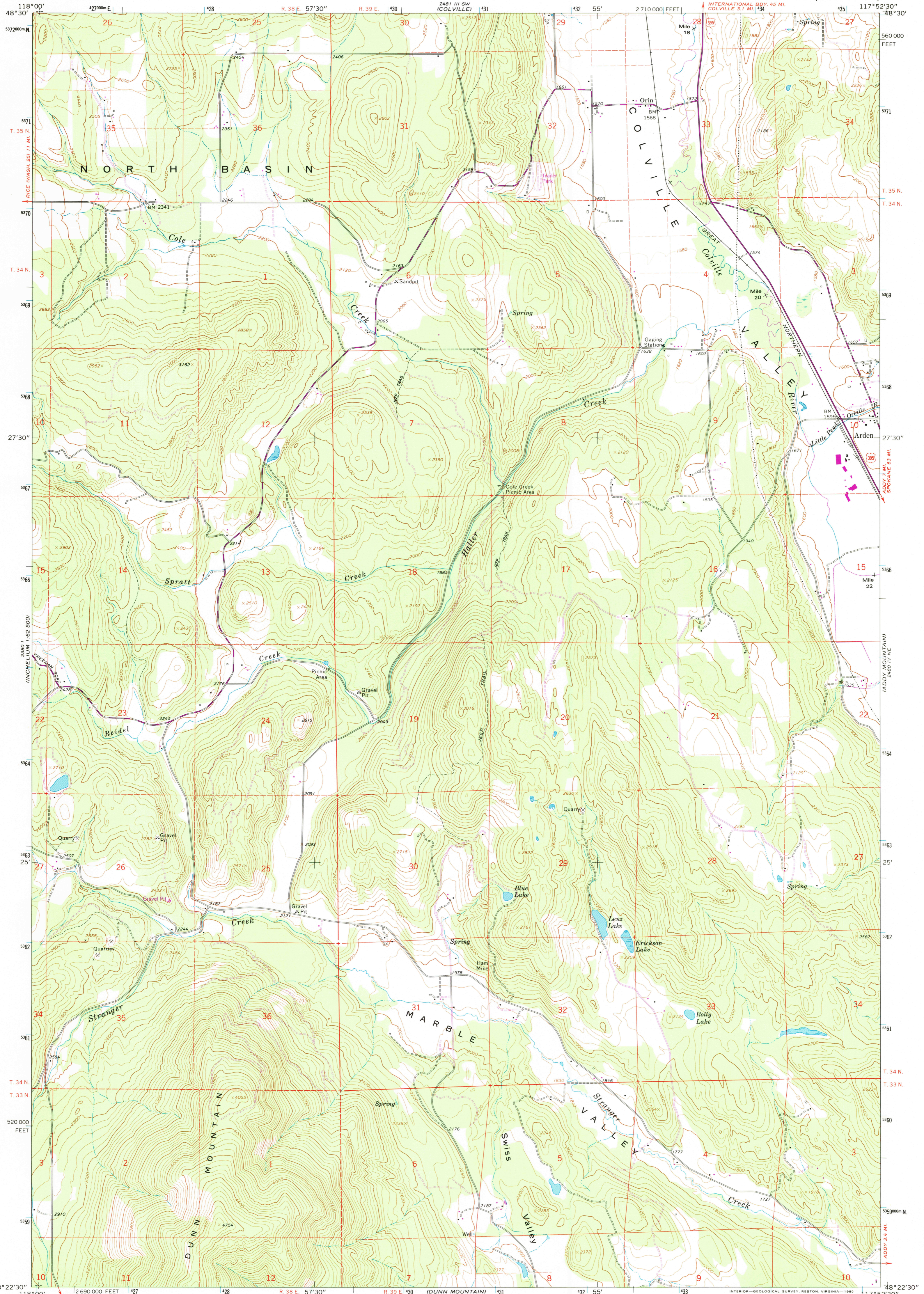


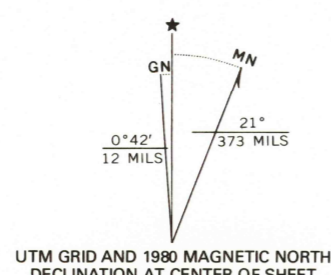
UNITED STATES
DEPARTMENT OF THE INTERIOR
GEOLOGICAL SURVEY

ARDEN QUADRANGLE
WASHINGTON—STEVENS CO.
7.5 MINUTE SERIES (TOPOGRAPHIC)

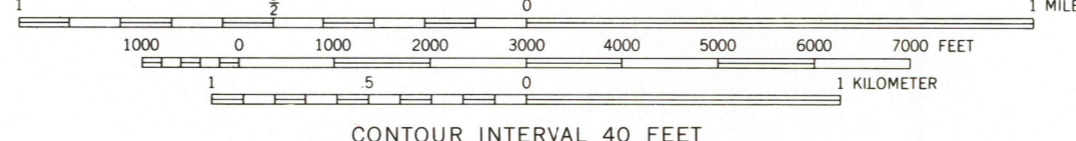


Mapped, edited, and published by the Geological Survey
Control by USGS and NOS/NOAA

Topography by photogrammetric methods from aerial photographs taken 1962. Field checked 1965
Polyconic projection. 1927 North American datum, 10,000-foot grid based on Washington coordinate system, north zone
1000-meter Universal Transverse Mercator grid ticks, zone 11, shown in blue
To place on the predicted North American Datum 1983 move the projection lines 16 meters north and 81 meters east as shown by dashed corner ticks
Fine red dashed lines indicate selected fence lines



SCALE 1:24,000

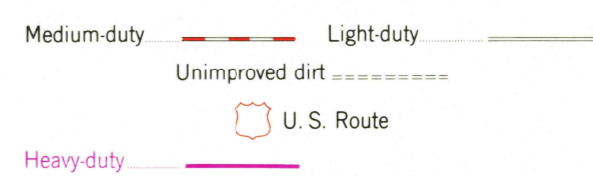


CONTOUR INTERVAL 40 FEET
DOTTED LINES REPRESENT 20-FOOT CONTOURS
NATIONAL GEODETIC VERTICAL DATUM OF 1929

THIS MAP COMPLIES WITH NATIONAL MAP ACCURACY STANDARDS
FOR SALE BY U. S. GEOLOGICAL SURVEY, DENVER, COLORADO 80225, OR RESTON, VIRGINIA 22092
A FOLDER DESCRIBING TOPOGRAPHIC MAPS AND SYMBOLS IS AVAILABLE ON REQUEST



ROAD CLASSIFICATION



ARDEN, WASH.
N4822.5—W11752.5/7.5

1965
PHOTOREVISED 1980
DMA 2480 IV NW—SERIES 1981

Revisions shown in purple compiled by the State of Washington from aerial photographs taken 1977 and other source data. This information not field checked. Map edited 1980.

USGS NHD HISTORICAL
MAP ARCHIVES
NOV 3 0 1995
REC'D FILE COPY

