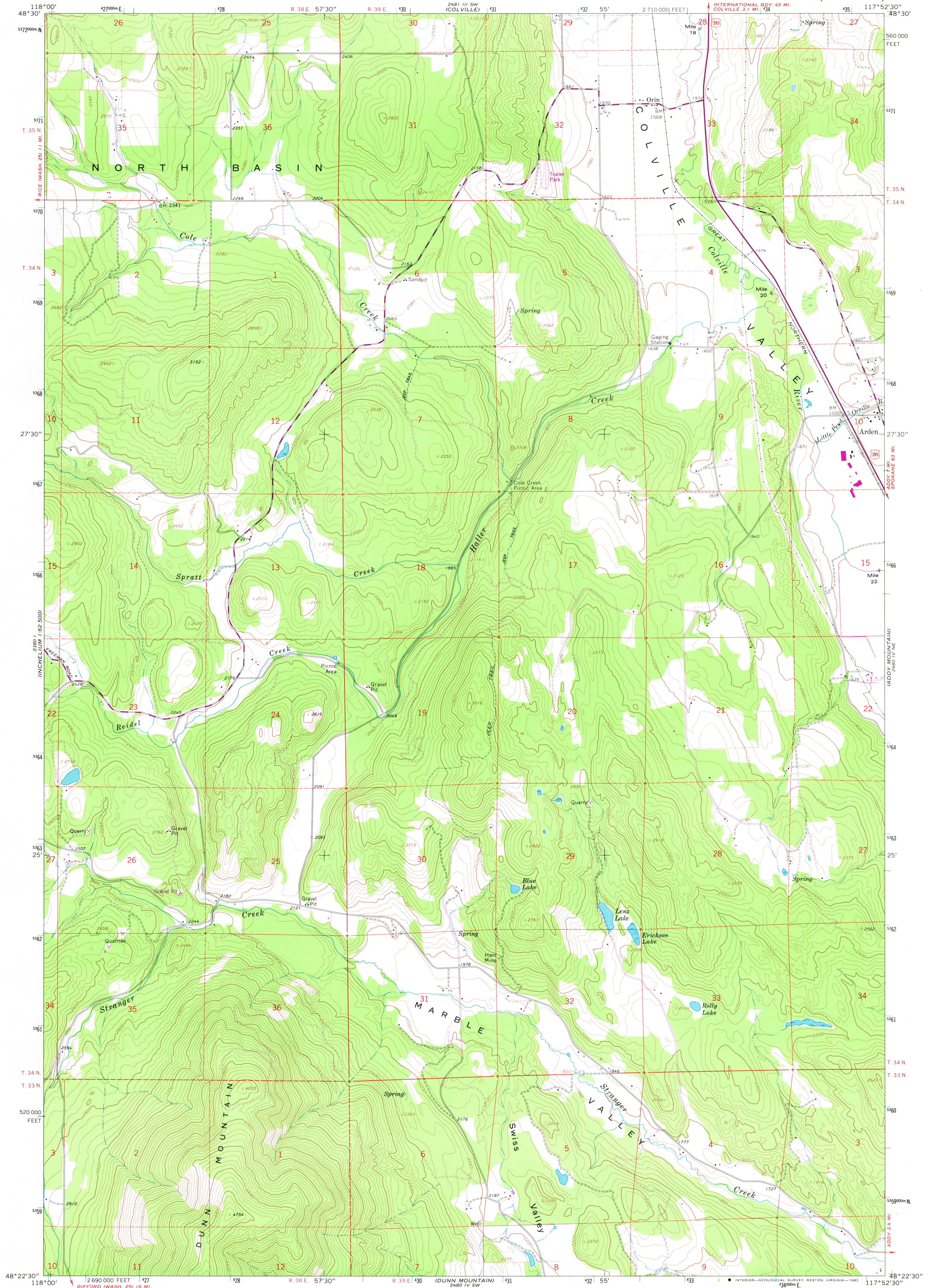
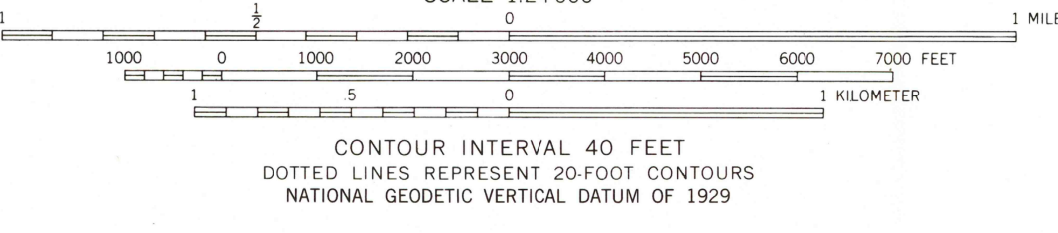
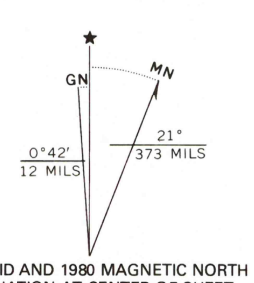


UNITED STATES
DEPARTMENT OF THE INTERIOR
GEOLOGICAL SURVEY

ARDEN QUADRANGLE
WASHINGTON—STEVENS CO.
7.5 MINUTE SERIES (TOPOGRAPHIC)



Mapped, edited, and published by the Geological Survey
Control by USGS and NOS/NOAA
Topography by photogrammetric methods from aerial photographs taken 1962. Field checked 1965
Polyconic projection. 1927 North American datum
10,000-foot grid based on Washington coordinate system, north zone
1000-meter Universal Transverse Mercator grid ticks, zone 11, shown in blue
To place on the predicted North American Datum 1983 move the projection lines 16 meters north and 81 meters east as shown by dashed corner ticks
Fine red dashed lines indicate selected fence lines



ROAD CLASSIFICATION

Medium-duty	Light-duty
Unimproved dirt	U.S. Route
Heavy-duty	

ARDEN, WASH.
N4822.5—W11752.5/7.5

THIS MAP COMPLIES WITH NATIONAL MAP ACCURACY STANDARDS
FOR SALE BY U. S. GEOLOGICAL SURVEY, DENVER, COLORADO 80225, OR RESTON, VIRGINIA 22092
A FOLDER DESCRIBING TOPOGRAPHIC MAPS AND SYMBOLS IS AVAILABLE ON REQUEST

Revisions shown in purple compiled by the State of Washington from aerial photographs taken 1977 and other source data. This information not field checked
Map edited 1980
PHOTOREVISED 1980
DMA 2480 IV NW—SERIES 5991

NOV 28 1980
1950
USGS
Historical File
Topographic