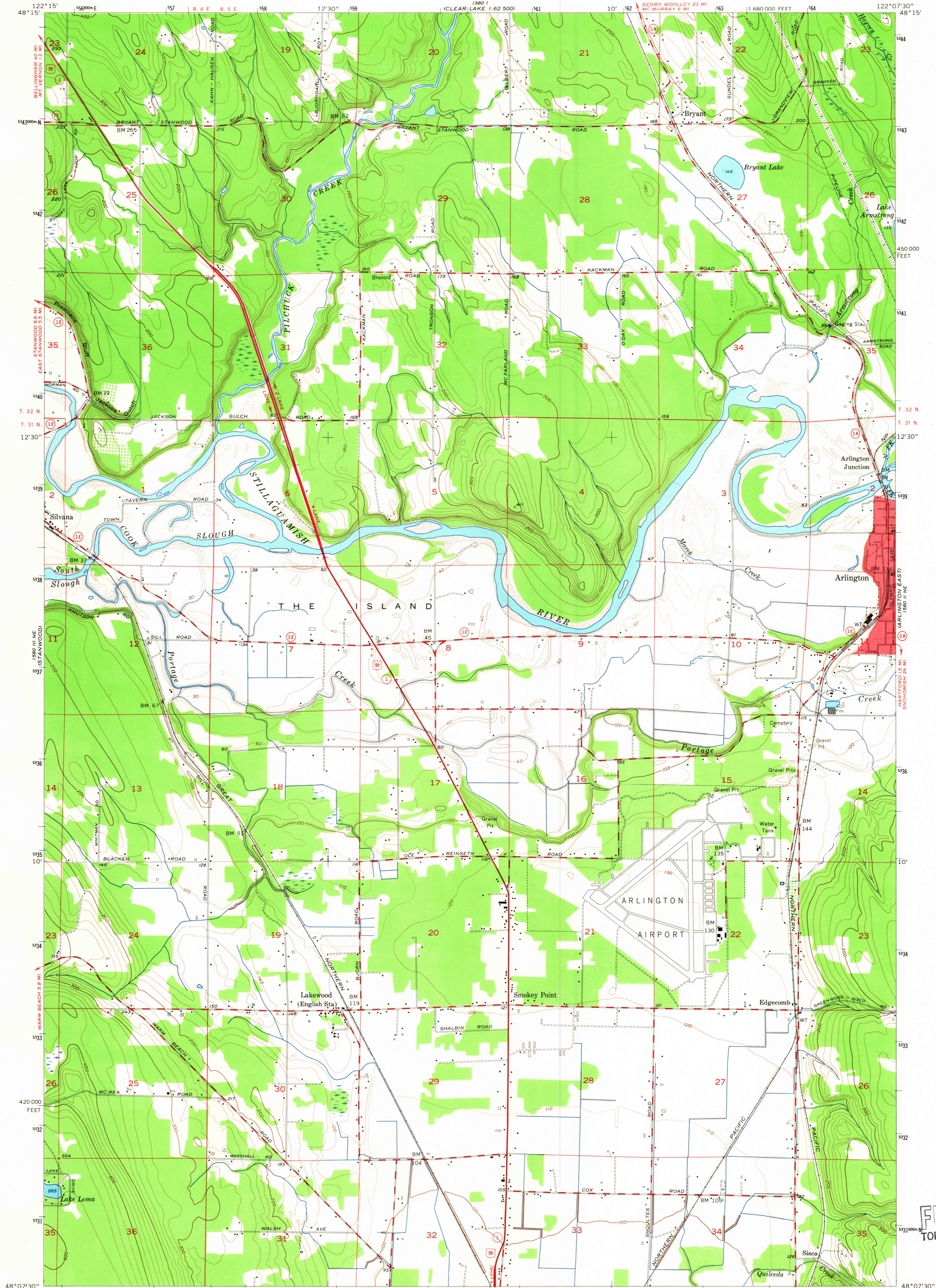


1580 I V SE
(CLEAR LAKE)

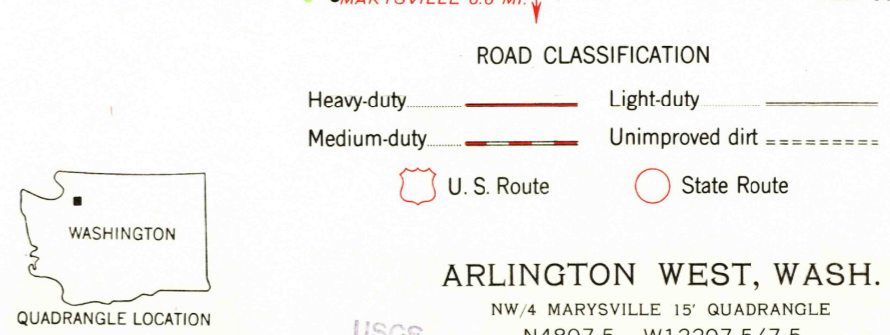
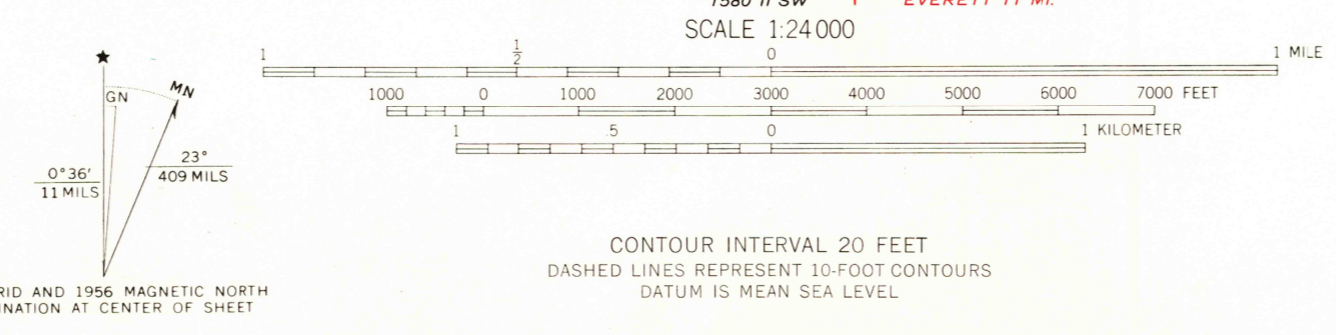
UNITED STATES
DEPARTMENT OF THE INTERIOR
GEOLOGICAL SURVEY

ARLINGTON WEST QUADRANGLE
WASHINGTON-SNOHOMISH CO.
7.5 MINUTE SERIES (TOPOGRAPHIC)
NW 4 MARYSVILLE 15' QUADRANGLE

1580 I V SE
(CLEAR LAKE)



Mapped, edited, and published by the Geological Survey
Control by USGS and USC&GS
Topography from aerial photographs by multiplex methods
and by planetable surveys 1956. Aerial photographs taken 1954
Polyconic projection. 1927 North American datum
10,000-foot grid based on Washington coordinate system,
north zone
1000-meter Universal Transverse Mercator grid ticks,
zone 10, shown in blue
Red tint indicates areas in which only
landmark buildings are shown



ARLINGTON WEST, WASH.
NW 4 MARYSVILLE 15' QUADRANGLE
N4807.5-W12207.5/7.5

THIS MAP COMPLIES WITH NATIONAL MAP ACCURACY STANDARDS
FOR SALE BY U. S. GEOLOGICAL SURVEY, DENVER, COLORADO 80225 OR WASHINGTON, D. C. 20242
A FOLDER DESCRIBING TOPOGRAPHIC MAPS AND SYMBOLS IS AVAILABLE ON REQUEST

U.S.G.S.
FILE COPY
TOPOGRAPHIC DIVISION

1525

AMS 1580 II NW-SERIES V891