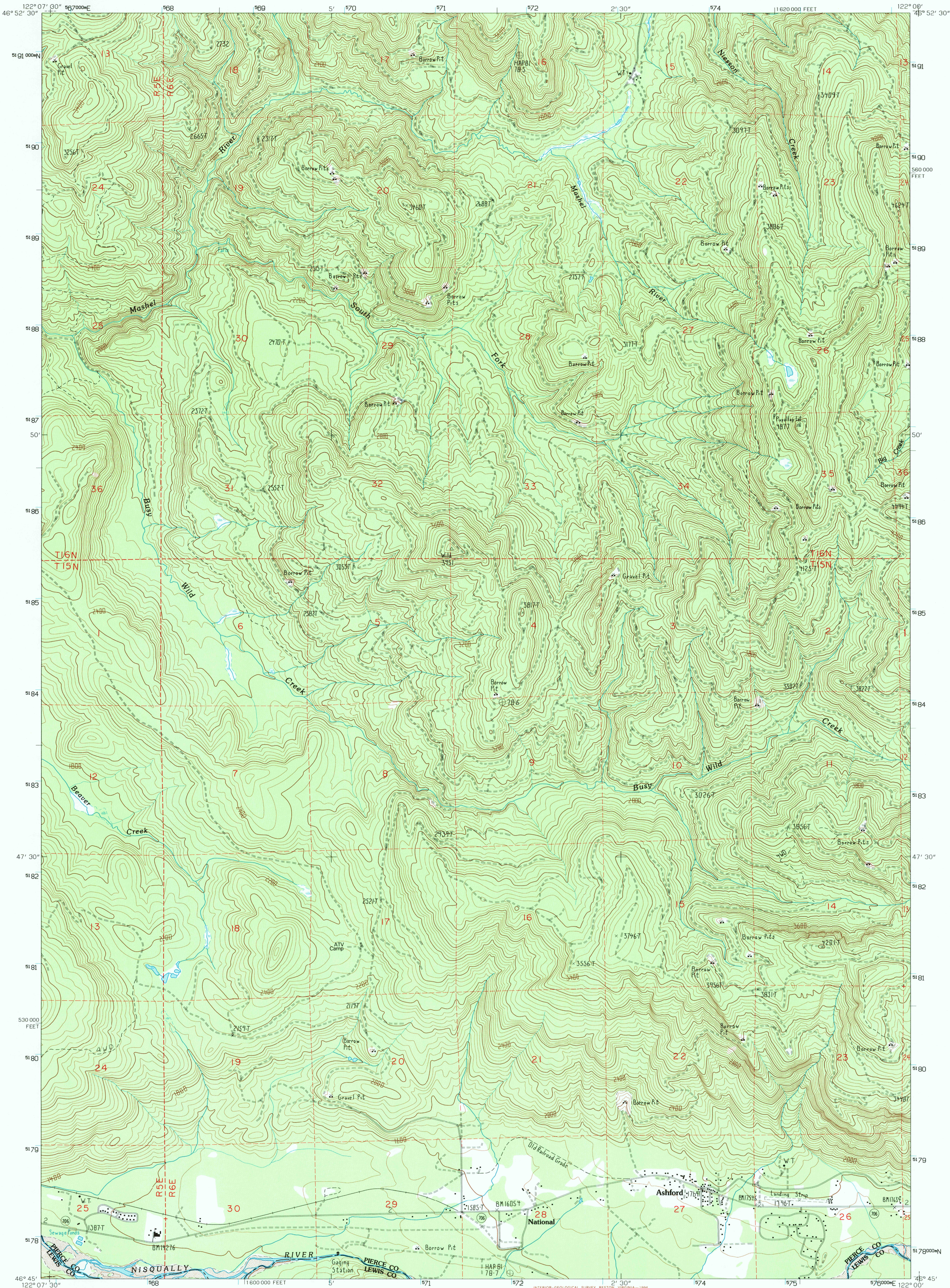


UNITED STATES  
DEPARTMENT OF THE INTERIOR  
GEOLOGICAL SURVEY

ASHFORD QUADRANGLE  
WASHINGTON  
7.5 MINUTE SERIES (TOPOGRAPHIC)



PRODUCED BY THE UNITED STATES GEOLOGICAL SURVEY  
CONTROL BY ..... USGS, NOS/NOAA  
COMPILED FROM AERIAL PHOTOGRAPHS TAKEN ..... 1975 AND 1982  
FIELD CHECKED ..... 1985. MAP EDITED ..... 1987  
PROJECTION ..... LAMBERT CONFORMAL CONIC  
BLUE 1000-METER UNIVERSAL TRANSVERSE MERCATOR TICS, ZONE 10  
10 000-FOOT STATE GRID TICS ..... WASHINGTON, SOUTH ZONE  
UTM GRID DECLINATION ..... 0°41' EAST  
1993 MAGNETIC NORTH DECLINATION ..... 19° EAST  
VERTICAL DATUM ..... NATIONAL GEODETIC DATUM OF 1929  
HORIZONTAL DATUM ..... NORTH AMERICAN DATUM OF 1927 (NAD 27)  
North American Datum of 1983 (NAD 83) is shown by  
dashed corner ticks. The values of the shift between NAD  
27 and NAD 83 for 7.5-minute intersections are obtainable  
from National Geodetic Survey NADCON software  
There may be private inholdings within the boundaries of  
any Federal and State reservations shown on this map.  
No distinction made between houses, barns, and other  
buildings

**PROVISIONAL MAP**  
Produced from original  
manuscript drawings. Infor-  
mation shown as of date of  
photography.

SCALE 1:24 000  
1 000 0 1000 2000 3000 4000 5000 6000 7000 8000 9000 10 000  
KILOMETERS  
METERS  
MILES  
FEET  
CONTOUR INTERVAL 40 FEET  
CONTROL ELEVATIONS SHOWN TO THE NEAREST 0.1 FOOT  
OTHER ELEVATIONS SHOWN TO THE NEAREST FOOT  
To convert meters to feet multiply by 3.2808  
To convert feet to meters multiply by 0.3048  
THIS MAP COMPLIES WITH NATIONAL MAP ACCURACY STANDARDS  
FOR SALE BY U.S. GEOLOGICAL SURVEY  
DENVER, COLORADO 80225 OR RESTON, VIRGINIA 22092

ADJOINING 7.5' QUADRANGLE NAMES  
1 Lake Kapowsin  
2 Le Dant Creek  
3 Golden Lakes  
4 Elbe  
5 Mount Wow  
6 Mineral  
7 Anderson Lake  
8 Sawtooth Ridge  
PHOTOINSPECTED FROM 1990 SOURCE; NO MAJOR CULTURE OR  
DRAINAGE CHANGES OBSERVED. BOUNDARIES AND NAMES VERIFIED  
1993

ROAD LEGEND  
Improved Road .....  
Unimproved Road .....  
Trail .....  
Interstate Route U.S. Route State Route  
ASHFORD, WASH.  
PROVISIONAL EDITION 1987  
46122-G1-TF-024  
MINOR REVISION 1993

