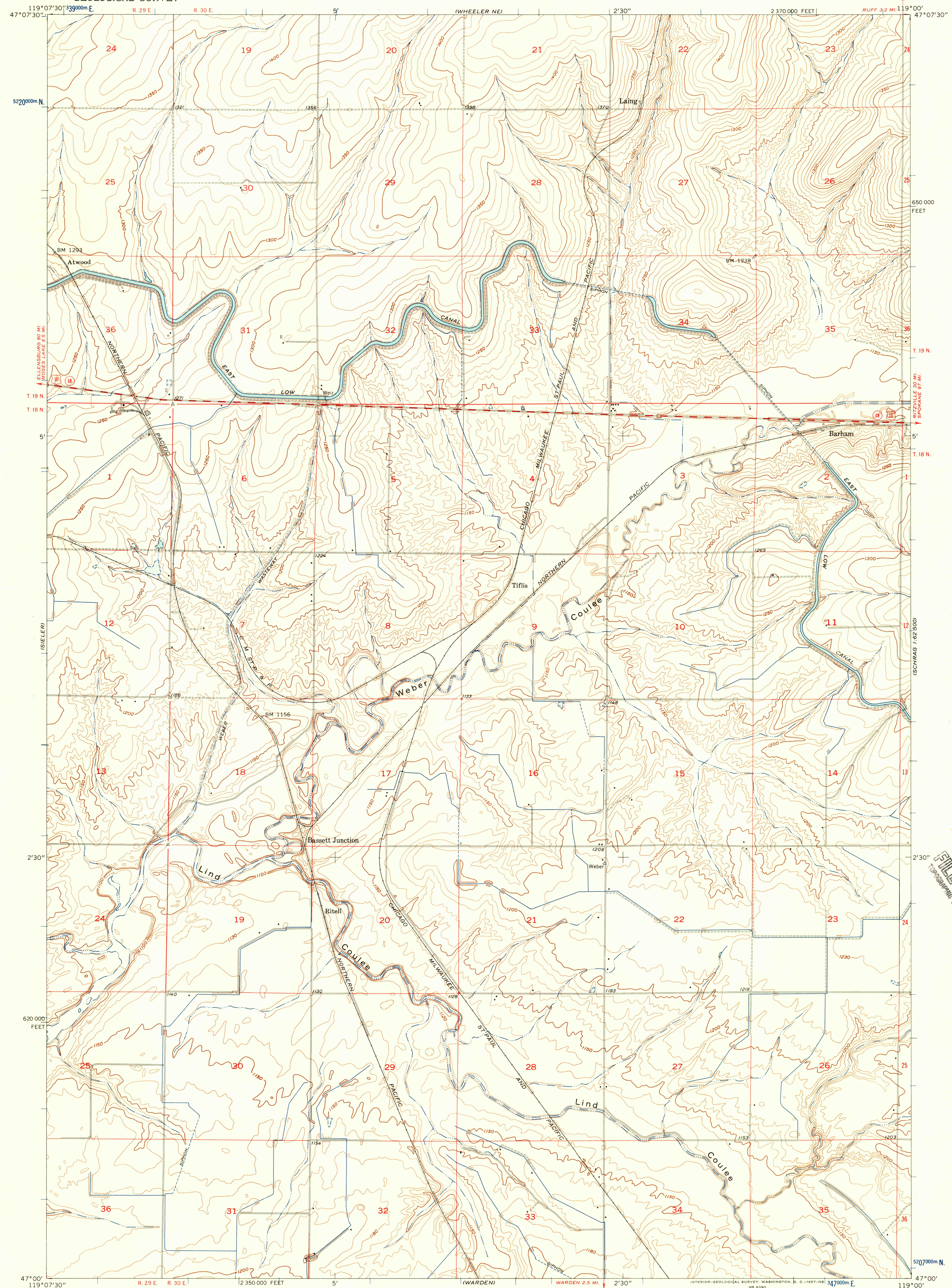


(WHEELER)
119°07'30" W
47°07'30" N

UNITED STATES
DEPARTMENT OF THE INTERIOR
GEOLOGICAL SURVEY

BASSETT JUNCTION QUADRANGLE
WASHINGTON—GRANT CO.
7.5 MINUTE SERIES (TOPOGRAPHIC)
SE/4 WHEELER 15' QUADRANGLE

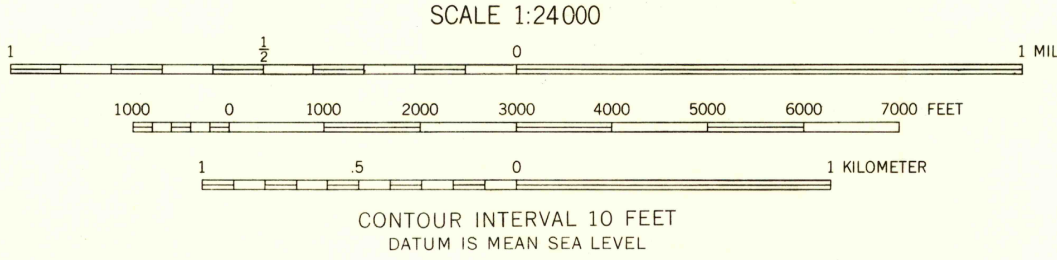
(SCHRAEG)
1:62,500
119°00' W
47°00' N



(SODA LAKE)

Mapped, edited, and published by the Geological Survey
Control by USGS, USC&GS, and USBR
Topography from planetable surveys by USBR 1937
Culture and drainage by multiplex methods from aerial
photographs taken 1954. Field check by USGS 1956
Polyconic projection. 1927 North American datum
10,000-foot grid based on Washington coordinate system,
south zone
1000-meter Universal Transverse Mercator grid ticks,
zone 11, shown in blue

21 1/2°
TRUE NORTH
MAGNETIC NORTH
APPROXIMATE MEAN
DECLINATION, 1956



ROAD CLASSIFICATION
Medium-duty ——— Light-duty ———
Unimproved dirt ———
U.S. Route ——— State Route ———

BASSETT JUNCTION, WASH.
SE/4 WHEELER 15' QUADRANGLE
N4700—W11900/7.5

USGS
Historical File
Topographic Division
1956

U.S.G.S.
FILE COPY
TOPOGRAPHIC DIVISION

THIS MAP COMPLIES WITH NATIONAL MAP ACCURACY STANDARDS
FOR SALE BY U. S. GEOLOGICAL SURVEY, DENVER 2, COLORADO OR WASHINGTON 25, D. C.
A FOLDER DESCRIBING TOPOGRAPHIC MAPS AND SYMBOLS IS AVAILABLE ON REQUEST

AUG - 5 1957
2645