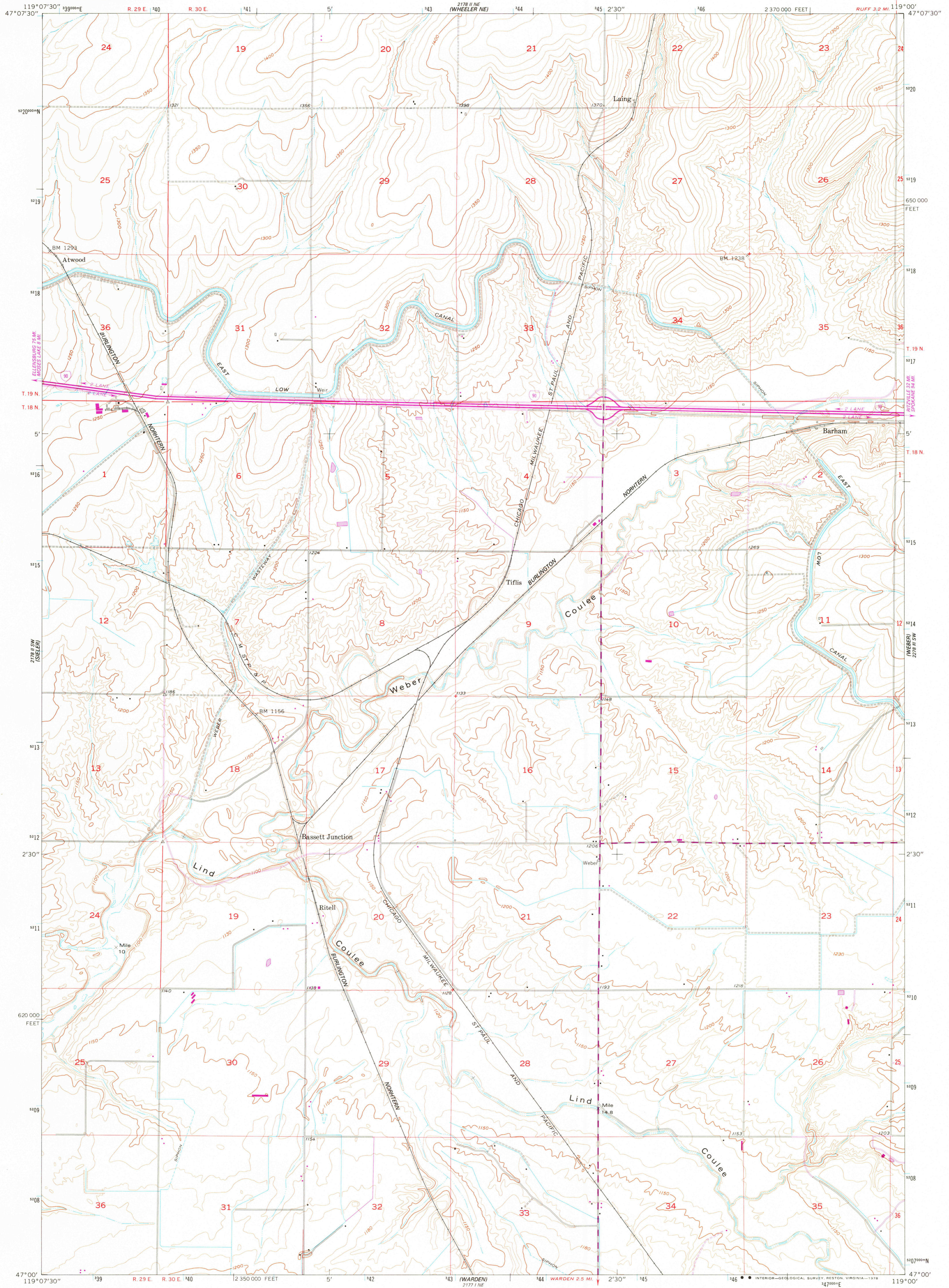


27° 18' 15" N
WHEELER

UNITED STATES
DEPARTMENT OF THE INTERIOR
GEOLOGICAL SURVEY

BASSETT JUNCTION QUADRANGLE
WASHINGTON—GRANT CO.
7.5 MINUTE SERIES (TOPOGRAPHIC)
SE/4 WHEELER 15' QUADRANGLE

27° 18' 15" N
WHEELER



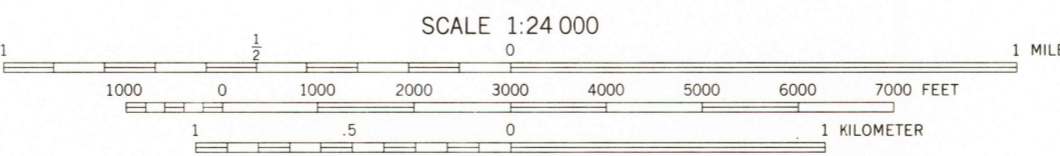
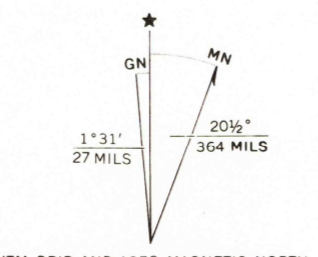
33° 00' 00" N
WHEELER

Maped, edited, and published by the Geological Survey
Control by USGS, NOS/NOAA and USBR

Topography from planetable surveys by USBR 1937
Culture and drainage by multiplex methods from aerial
photographs taken 1954. Field check by USGS 1956

Polyconic projection. 1927 North American datum
10,000-foot grid based on Washington coordinate system,
south zone

1000-meter Universal Transverse Mercator grid ticks,
zone 11, shown in blue
Revisions shown in purple compiled from aerial photographs
taken 1976. This information not field checked
Map edited 1978



CONTOUR INTERVAL 10 FEET
NATIONAL GEODETIC VERTICAL DATUM OF 1929

THIS MAP COMPLIES WITH NATIONAL MAP ACCURACY STANDARDS
FOR SALE BY U. S. GEOLOGICAL SURVEY, DENVER, COLORADO 80225, OR RESTON, VIRGINIA 22092
A FOLDER DESCRIBING TOPOGRAPHIC MAPS AND SYMBOLS IS AVAILABLE ON REQUEST



- ROAD CLASSIFICATION
- Medium-duty ——— Light-duty ———
 - Unimproved dirt ———
 - U. S. Route ——— State Route ———
 - Interstate Route ———

BASSETT JUNCTION, WASH.
SE/4 WHEELER 15' QUADRANGLE
N4700—W11900/7.5

USGS
Historical File
Topographic Division
1956
PHOTOREVISED 1978
AMS 2178 II SE-SERIES V891

AUG 2 2 1978

3300

33° 00' 00" N
WHEELER