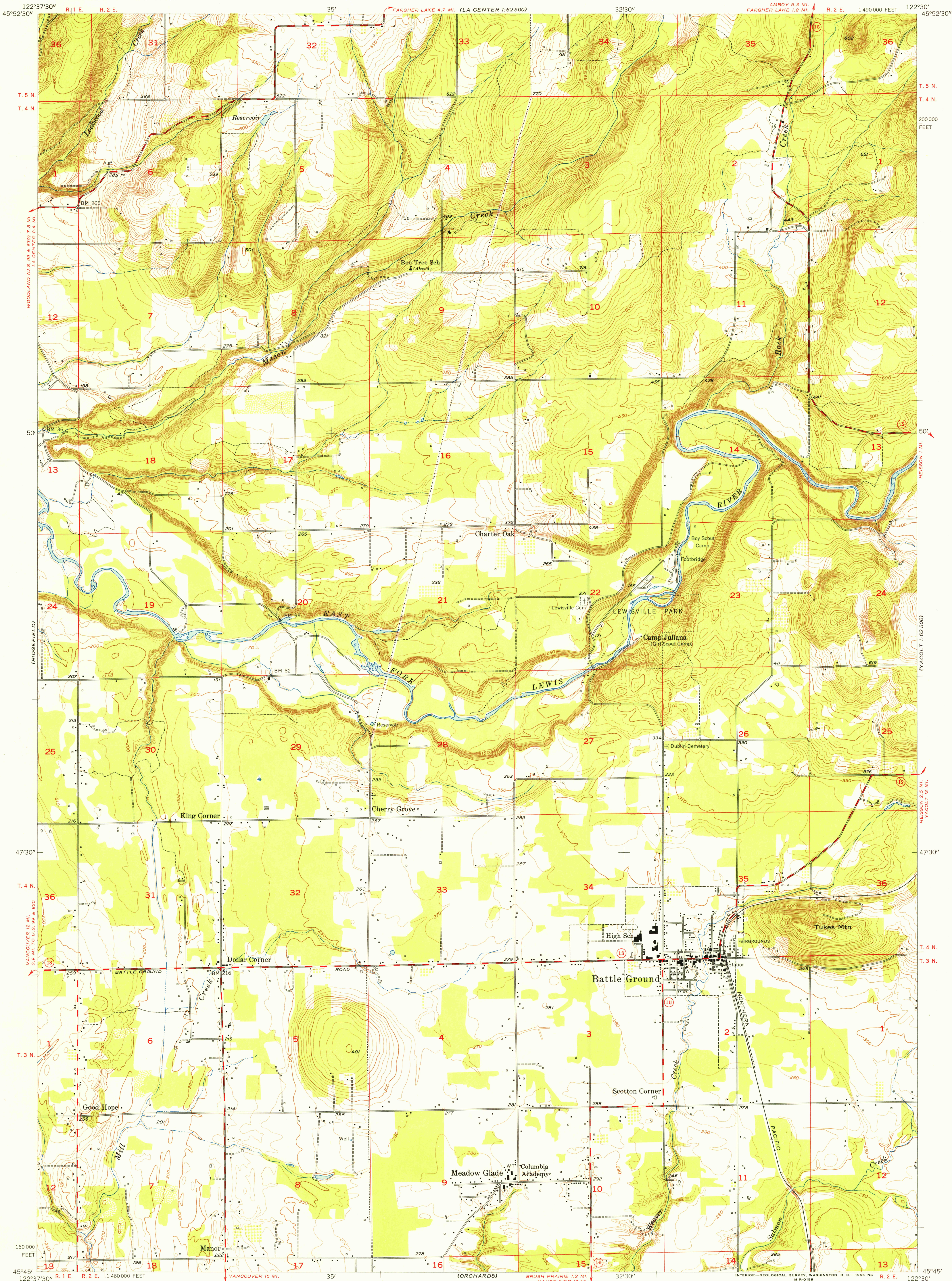


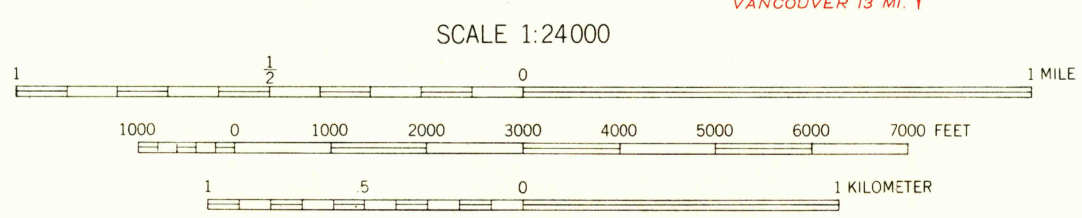
UNITED STATES  
DEPARTMENT OF THE INTERIOR  
GEOLOGICAL SURVEY

BATTLE GROUND QUADRANGLE  
WASHINGTON—CLARK CO.  
7.5 MINUTE SERIES (TOPOGRAPHIC)  
SE/4 LA CENTER 15' QUADRANGLE



U.S.G.S.  
FILE COPY  
TOPOGRAPHIC DIVISION

Maped, edited, and published by the Geological Survey  
Control by USGS and USCE  
Topography from aerial photographs by Kelsh plotter  
Aerial photographs taken 1951. Field check 1954  
Polyconic projection. 1927 North American datum  
10,000-foot grid based on Washington coordinate system, south zone



ROAD CLASSIFICATION  
Heavy duty ——— Light duty ———  
Medium duty ——— Unimproved dirt ———  
U. S. Route ——— State Route ———



BATTLE GROUND, WASH.  
SE/4 LA CENTER 15' QUADRANGLE  
N 4545—W 12230/7.5

U.S.G.S.  
FILE COPY  
TOPOGRAPHIC DIVISION

THIS MAP COMPLIES WITH NATIONAL MAP ACCURACY STANDARDS  
FOR SALE BY U. S. GEOLOGICAL SURVEY, FEDERAL CENTER, DENVER, COLORADO OR WASHINGTON 25, D. C.  
A FOLDER DESCRIBING TOPOGRAPHIC MAPS AND SYMBOLS IS AVAILABLE ON REQUEST

1954

USGS  
Historical File  
Topographic Division

DEC 1 1955

3200