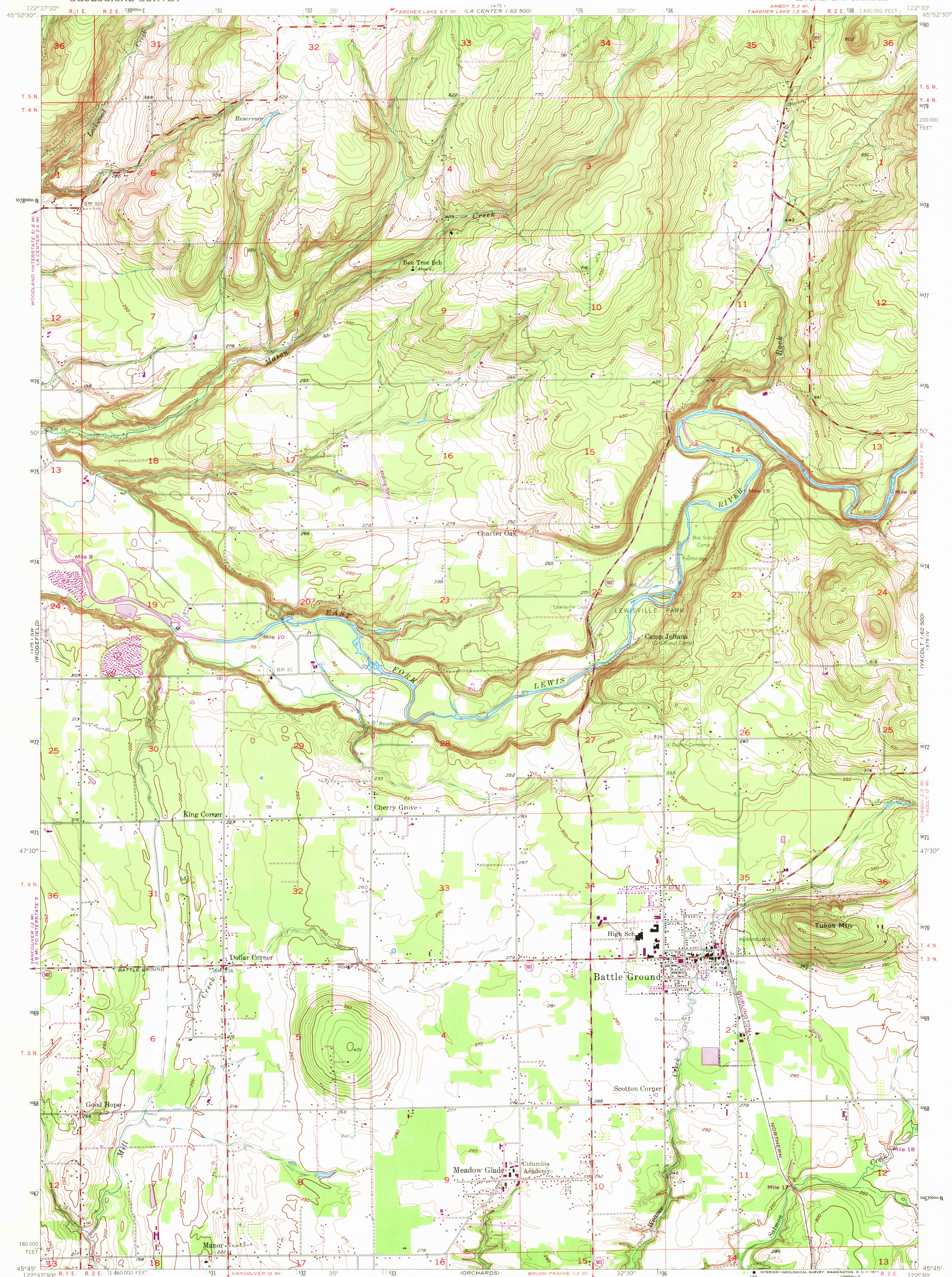


UNITED STATES
DEPARTMENT OF THE INTERIOR
GEOLOGICAL SURVEY

BATTLE GROUND QUADRANGLE
WASHINGTON-CLARK CO.
7.5 MINUTE SERIES (TOPOGRAPHIC)
SE/4 LA CENTER 15' QUADRANGLE



Mapped, edited, and published by the Geological Survey
Control by USGS and USCE

Topography from aerial photographs by Kelsh plotter
Aerial photographs taken 1951. Field check 1954
Polyconic projection. 1927 North American datum
10,000-foot grid based on Washington coordinate system,
south zone
1000-meter Universal Transverse Mercator grid ticks,
zone 10, shown in blue

Revisions shown in purple compiled from aerial photographs
taken 1970. This information not field checked

SCALE 1:24,000
1 0 1000 2000 3000 4000 5000 6000 7000 FEET
1 0 5 10 KILOMETER

CONTOUR INTERVAL 10 FEET
DATUM IS MEAN SEA LEVEL

THIS MAP COMPLIES WITH NATIONAL MAP ACCURACY STANDARDS
FOR SALE BY U.S. GEOLOGICAL SURVEY, DENVER, COLORADO 80225, OR WASHINGTON, D. C. 20242
A FOLDER DESCRIBING TOPOGRAPHIC MAPS AND SYMBOLS IS AVAILABLE ON REQUEST

ROAD CLASSIFICATION

Heavy-duty ——— Light-duty ———
Medium-duty ——— Unimproved dirt ———
State Route



BATTLE GROUND, WASH.
SE/4 LA CENTER 15' QUADRANGLE
N 4545-W 12230/7.5

1954
PHOTOREVISED 1970
AMS 1475 I SE-SERIES V891

USGS
HISTORICAL FILE
TOPOGRAPHIC DIVISION
2145

OCT 13 1971