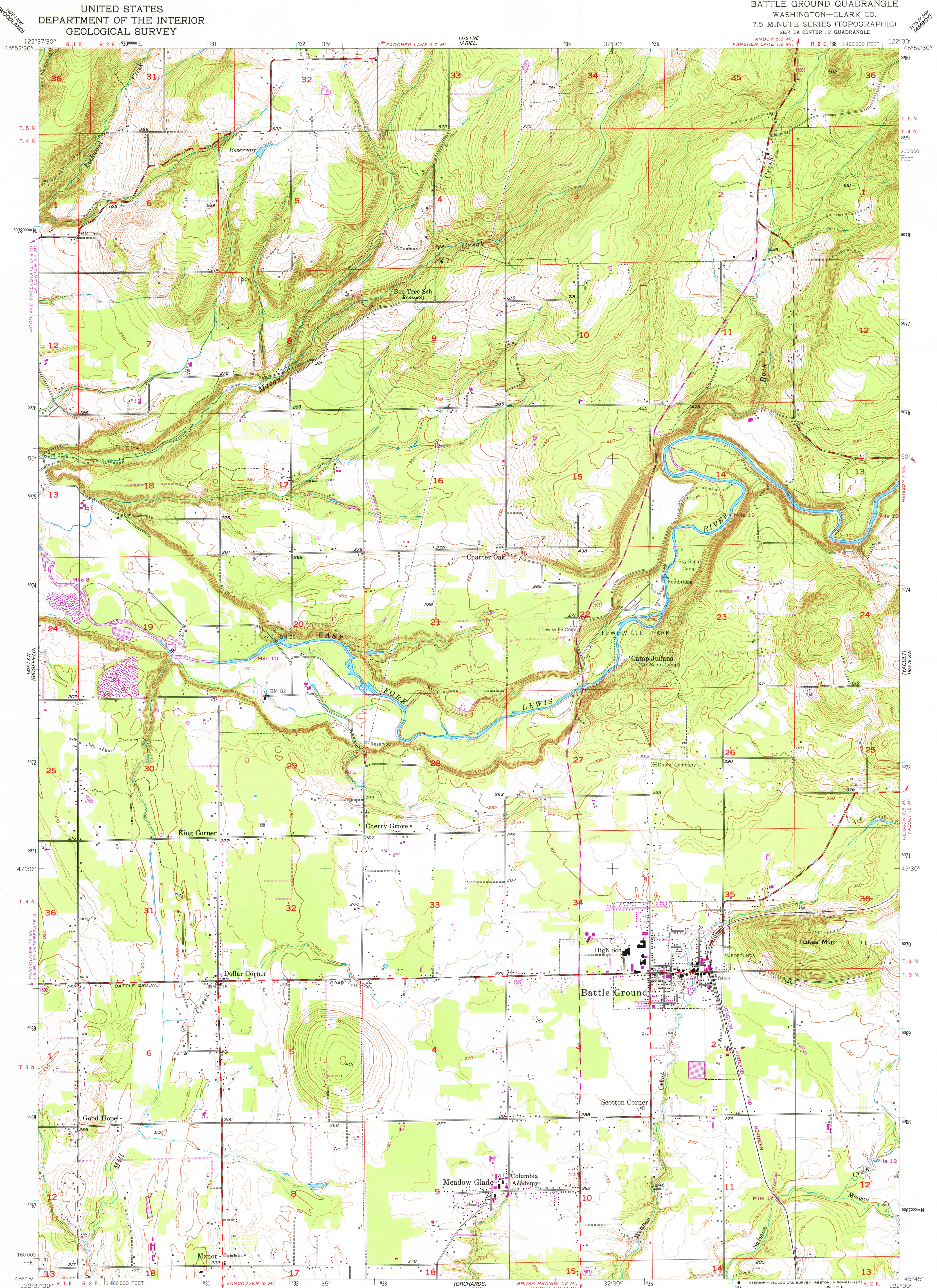


UNITED STATES
DEPARTMENT OF THE INTERIOR
GEOLOGICAL SURVEY

BATTLE GROUND QUADRANGLE
WASHINGTON—CLARK CO.
7.5 MINUTE SERIES (TOPOGRAPHIC)
SE/4 LA CENTER 15' QUADRANGLE



Mapped, edited, and published by the Geological Survey

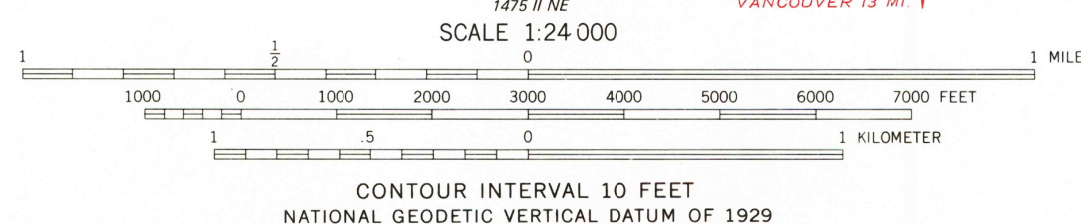
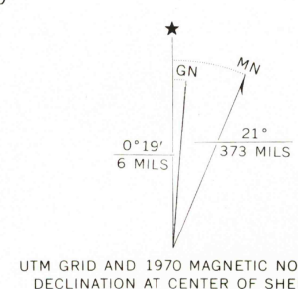
Control by USGS and USCE

Topography from aerial photographs by Kelsh plotter
Aerial photographs taken 1951. Field check 1954

Polycyclic projection. 1927 North American datum
10,000-foot grid based on Washington coordinate system,
south zone
1000-meter Universal Transverse Mercator grid ticks,
zone 10, shown in blue

Revisions shown in purple compiled from aerial photographs
taken 1970. This information not field checked

Map photoinspired 1975
No major culture or drainage changes observed



ROAD CLASSIFICATION	
Heavy-duty	Light-duty
Medium-duty	Unimproved dirt
	State Route

BATTLE GROUND, WASH.

SE/4 LA CENTER 15' QUADRANGLE

N 4545—W 12230/7.5

PHOTOINSPECTED 1975

1954

PHOTOREVISED 1970

AMS 1475 I SE—SERIES V891

OCT 18 1977

3695

THIS MAP COMPLIES WITH NATIONAL MAP ACCURACY STANDARDS
FOR SALE BY U. S. GEOLOGICAL SURVEY, DENVER, COLORADO 80225, OR RESTON, VIRGINIA 22092
A FOLDER DESCRIBING TOPOGRAPHIC MAPS AND SYMBOLS IS AVAILABLE ON REQUEST

USGS
Historical File
Topographic Division